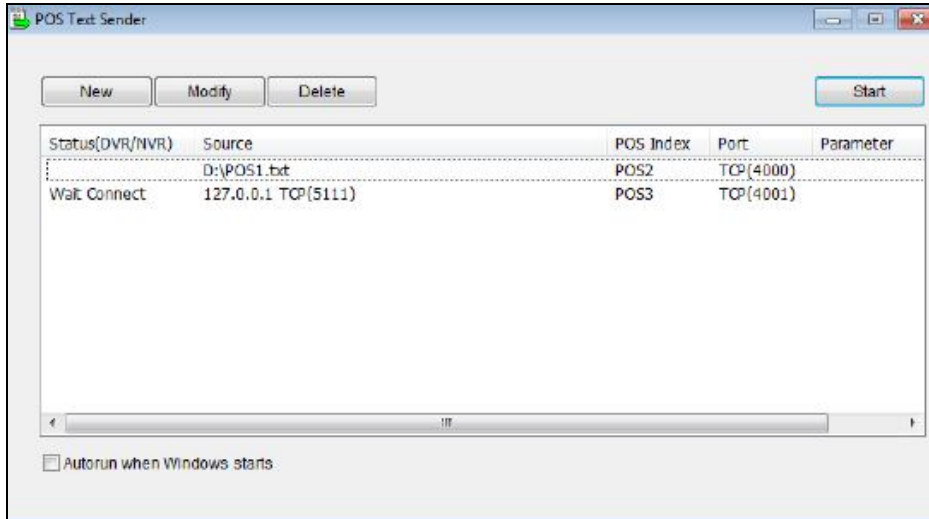
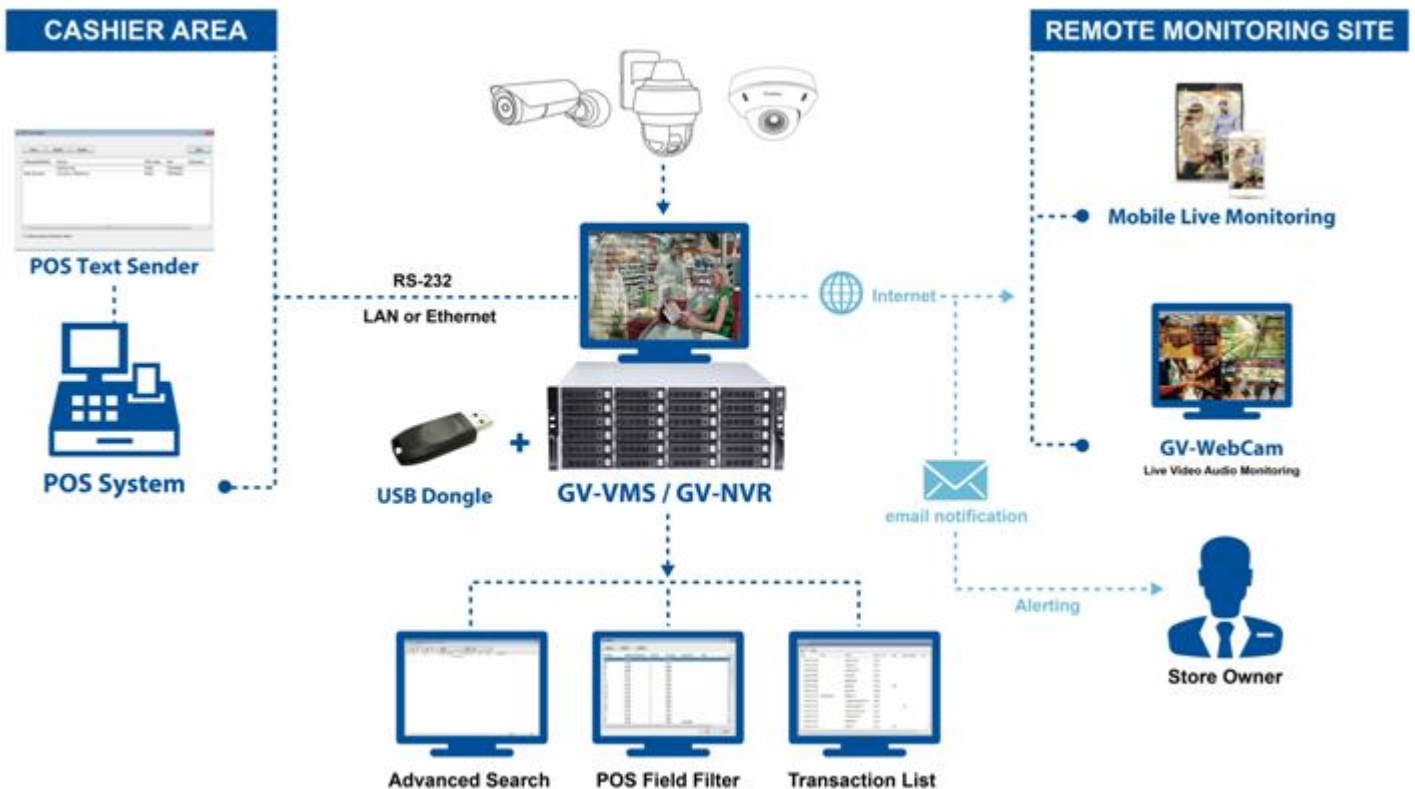


GV-POS Text Sender



INTRODUCTION

Using the GV-POS Text Sender, you can directly connect the GV-DVR / NVR /VMS to the POS device which is of Windows system generating TXT, INI or JNL file format, or compatible of OPOS protocol. The POS transaction data is transferred to the GV-DVR / NVR / VMS via a RS-232 serial cable or TCP/IP connection. The transaction data will be overlaid on live images or recordings.



Specifications		
Supported POS Device Type		Windows based (with TXT, INI, JNL file format), OPOS protocol
Software		GV-POS Text Sender
Hardware	For GV-DVR / NVR V8.4 or later	GV-USB Dongle with 1, 2, 4, 8, 12, or 16 port(s)
	For GV-VMS	GV-USB Dongle with 1, 2, 4, 8, 12, 16 or 32 port(s)
	For GV-DVR / NVR earlier than V8.4	GV-USB Dongle with 16 ports
Max. number of POS connected to GV-System	Serial Port Connection	4
	Network connection	16 for GV-DVR / NVR 32 for GV-VMS
<p>Note:</p> <ol style="list-style-type: none"> 1. It is required to install the program GV-POS Text Sender on the POS device. The program can be found in the Surveillance software DVD. 2. All specifications are subject to change without notice. 		