

# Quick Start Guide

## GV-IP Decoder Box and GV-Pad

### V1.02

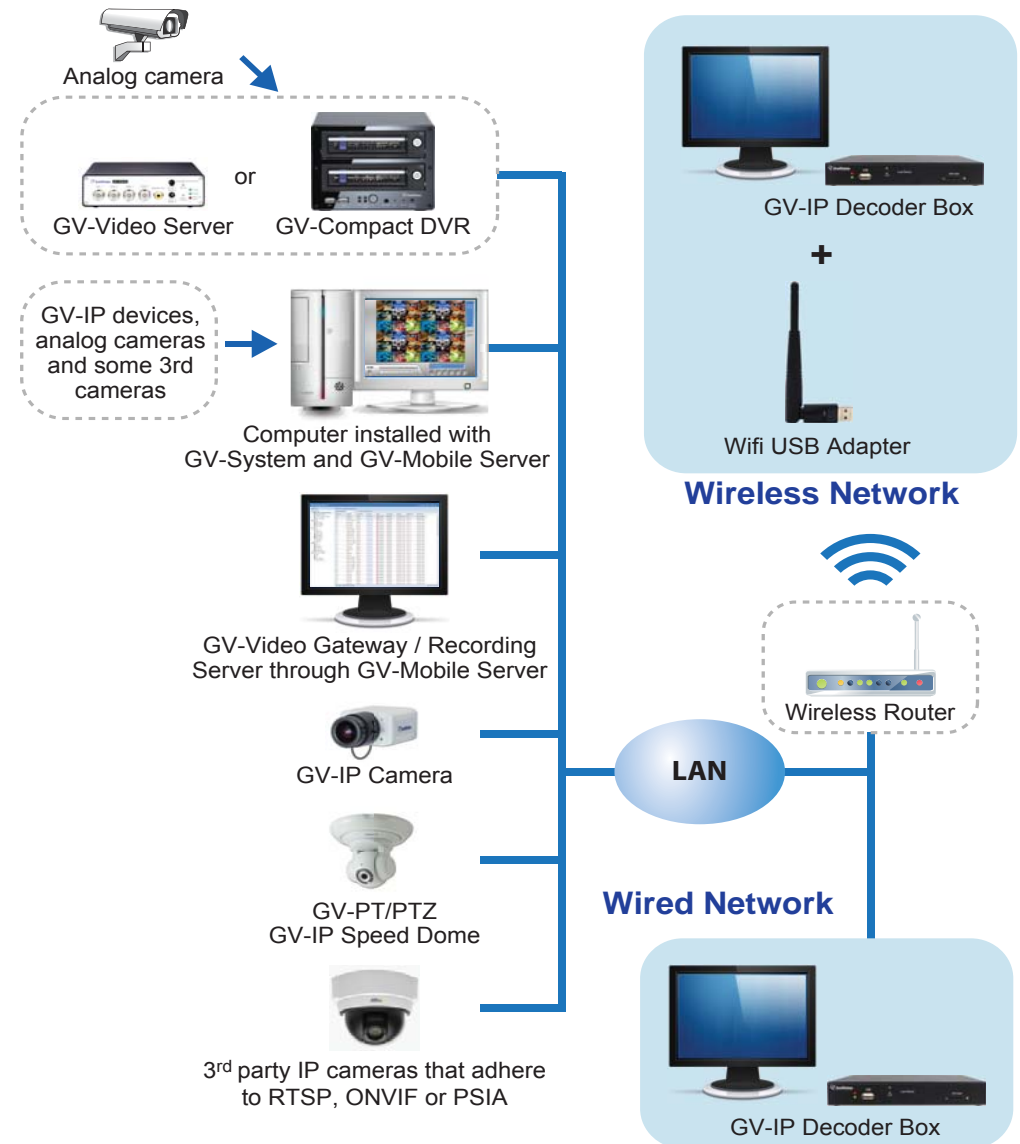


**Note: no SD/SDHC card slot or local storage function in Argentina**

Thank you for purchasing GV-IP Decoder Box and GV-Pad. This guide is designed to assist the new user in getting immediate results from the GV-IP Decoder Box and GV-Pad. For advanced information on how to use the GV-IP Decoder Box and GV-Pad, please refer to *GV-IP Decoder Box and GV-Pad User's Manual* on software DVD.

## 1 Introduction

Welcome to the *GV-IP Decoder Box / GV-Pad Quick Start Guide*. In the following sections, you will learn about the basic configuration and features of the GV-IP Decoder Box / GV-Pad. For a detailed user's manual, see *GV-IP Decoder Box and GV-Pad User's Manual* on software DVD.



## Packing List

### GV-IP Decoder Box

- GV-IP Decoder Box × 1
- AC/DC adapter × 1 (12 V, 3 A, 36 W)
- Software DVD x 1
- IR remote control × 1
- Power cord x 1
- GV-IP Decoder Box / GV-Pad Quick Start Guide

### GV-Pad

- GV-Pad × 1
- Magnetic hinge x 1
- AC/DC adapter × 1 (12 V, 3 A, 36 W)
- Software DVD x 1
- IR remote control × 1
- Screw x 4
- Power cord x 1
- GV-IP Decoder Box / GV-Pad Quick Start Guide

## Compatible Devices

The GV-IP Decoder Box / GV-Pad is compatible with:

1. Most GeoVision IP devices (of the indicated firmware versions) using H.264 codec
2. GV-SD200 using H.264 codec through ONVIF
3. Third-party IP devices that support H.264 and adhere to RTSP, ONVIF or PSIA.

| Supported GeoVision IP Devices                    |                               |                   |
|---|-------------------------------|-------------------|
| Device Type                                       | Models                        | Firmware Versions |
| Box Camera  | GV-BX110D                     | V1.08 or later    |
|   | All models (except GV-BX110D) | V1.06 or later    |
| Bullet Camera                                     | GV-BL110D                     | V1.08 or later    |
|   | All models (except GV-BL110D) | V1.06 or later    |
| Cube Camera<br>Fixed Dome<br>Vandal Proof IP Dome | All models                    | V1.06 or later    |
| Mini Fixed Dome                                   | GV-MFD110                     | V1.08 or later    |
|   | All models (except GV-MFD110) | V1.06 or later    |
| PT Camera   | GV-PT110D                     | V1.08 or later    |
| PTZ Camera  | GV-PTZ010D                    | V1.08 or later    |
| Speed Dome  | GV-SD010                      | V1.02 or later    |
|   | GV-SD200                      | V1.0 or later     |

| Supported GeoVision IP Devices |                               |                   |
|--------------------------------|-------------------------------|-------------------|
| Device Type                    | Models                        | Firmware Versions |
| Video Server                   | GV-VS04H                      | V1.04 or later    |
|                                | GV-VS11                       | V1.0 or later     |
|                                | GV-VS12                       | V1.05 or later    |
| Compact DVR                    | GV-Compact DVR V3 series only | V1.0 or later     |

**IMPORTANT:** The connected GeoVision and third-party channels must be set with H.264 codec to be compatible.

To decode and display **non-H.264** IP channels or **analog** channels, connect the devices to GV-System and access them through GV-Mobile Server. The supported devices are listed below.

### Supported Devices Connected to GV-System

Analog cameras

All models of GeoVision IP cameras, GV-Video Server, GV-Compact DVR, GV-IP Speed Dome, GV-Smart Box and GV-DSP LPR

11 brands of third-party IP cameras. For detail, see

[http://www.geovision.com.tw/english/4\\_21.asp](http://www.geovision.com.tw/english/4_21.asp)

## Options

Optional accessories can expand the capabilities and versatility of your GV-IP Decoder Box / GV-Pad. Contact your dealer for more information.

| Device                 | Description  |
|------------------------|--|
| Wall Mount Kit         | For GV-IP Decoder Box only. Used to mount GV-IP Decoder Box on wall.   |
| VESA monitor mount kit | For GV-IP Decoder Box only. Used to mount GV-IP Decoder Box on the back of a VESA monitor.   |
| GV-Joystick            | The GV-Joystick facilitates focusing, zooming, panning, tilting of GeoVision and third-party PT, PTZ and Speed Dome cameras on GV-IP Decoder Box / GV-Pad.   |
| GV-WiFi USB Adapter    | The GV-WiFi USB adapter is a plug-and-play device that provides wireless connectivity to GeoVision IP devices. The GV-WiFi USB Adapter complies with IEEE802.11 b/g/n (Draft 3.0) standards for wireless networking. |

## GV-IP Decoder Box

### Front View



| No. | Name           | Function   |
|-----|----------------|--|
| 1   | LED Indicators | The <b>green</b> LED indicates the system is ready for use.<br>The <b>red</b> LED indicates the power is supplied.   |
| 2   | USB            | Connect to a GV-Joystick, a USB storage device or a GV-WiFi USB adapter.   |
| 3   | IR             | Built-in IR receiver to receive the IR signals from the IR remote control.   |
| 4   | Default        | Reset the GV-IP Decoder Box to the default factory settings. Use a pin to press the button until the green LED fades. This will take about 10 seconds. The system will then reset and reboot itself shortly. |
| 5   | SD Card Slot   | Connect to an SD card for local storage of snapshot and firmware upgrade.  |

### Back View

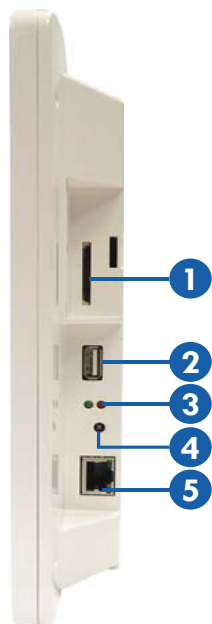


| No. | Name         | Function  |
|-----|--------------|---|
| 1   | Network      | Connect to the network.                               |
| 2   | HDMI         | Connect to an HDMI supported display device.          |
| 3   | VGA          | Connect to a VGA monitor.                             |
| 4   | Power OFF/ON | Switch the power on or off.                           |
| 5   | DC 12V       | Connect to power by using the supplied power adapter. |

**Note:** The SPDIF and L/R ports are not functional.

## GV-Pad

### Right Panel View



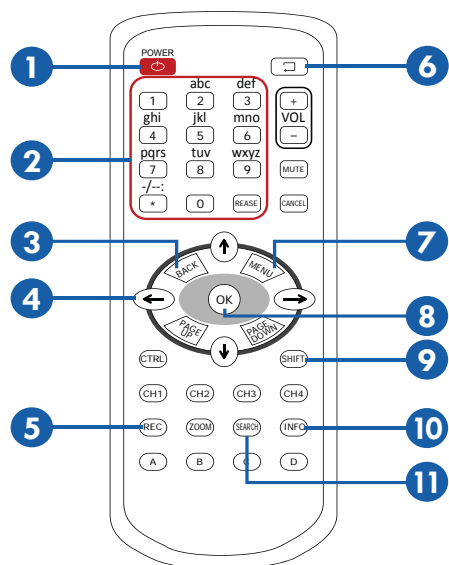
| No. | Name           | Function   |
|-----|----------------|--|
| 1   | SD Card Slot   | Connect to an SD card for local storage of snapshot and firmware upgrade.  |
| 2   | USB            | Connect to a GV-Joystick, or to a USB storage device or a GV-WiFi USB Adapter.                                     |
| 3   | LED Indicators | The <b>green</b> LED indicates the system is ready for use.<br>The <b>red</b> LED indicates the power is supplied. |
| 4   | IR             | Built-in IR receiver to receive the IR signals from the IR remote control.   |
| 5   | Network        | Connect to the network.  |

### Left Panel View



| No. | Name         | Function  |
|-----|--------------|---|
| 1   | MENU         | <ul style="list-style-type: none"> <li>Switch to the setup menu.</li> <li>Load default: Press for 10 seconds to load default settings.</li> </ul>   |
| 2   | ENTER        | <ul style="list-style-type: none"> <li>Save settings in the Setup Menu.</li> <li>Display selected channels.</li> </ul>                              |
| 3   | UP           | Move the cursor up.   |
| 4   | DOWN         | Move the cursor down.   |
| 5   | LEFT         | <ul style="list-style-type: none"> <li>Move the cursor left.</li> <li>Unselect a channel on the Device List.</li> </ul>                             |
| 6   | RIGHT        | <ul style="list-style-type: none"> <li>Move the cursor right.</li> <li>Select a channel on the Device List.</li> </ul>                              |
| 7   | STAND BY     | Press to enter the Standby mode. In the standby mode, the screen turns off to minimize power consumption. Press the key again to enter the ON mode. |
| 8   | Power OFF/ON | Switch the power on or off.   |
| 9   | DC 12V       | Connect to power using the supplied power adapter.  |

## The IR Remote Control



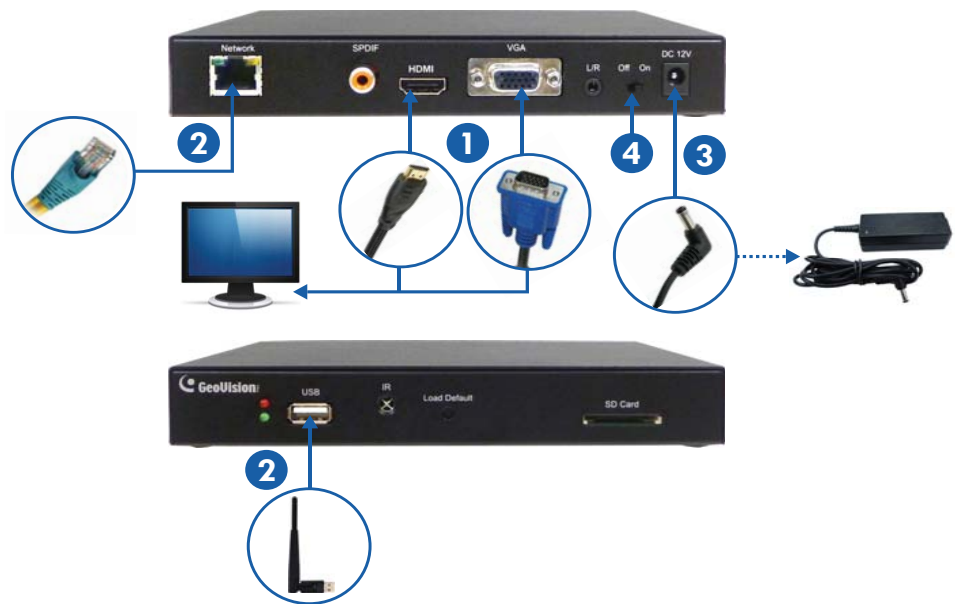
| No. | Name  | Function   |
|-----|---|--|
| 1   | Power   | Turn on or off the GV-IP Decoder Box / GV-Pad.   |
| 2   | Numeric / Alphabetical / Punctuation Marks keys | Enter numbers, alphabets or punctuation marks.   |
| 3   | Back  | Back to the previous page in the Setup Menu.   |
| 4   | Arrow   | <ul style="list-style-type: none"> <li>Move up, down, right and left in the Setup Menu.</li> <li>Right arrow key: select a channel on the Device List.</li> <li>Left arrow key: unselect a channel on the Device List.</li> </ul>  |
| 5   | REC   | Capture a snapshot.  |
| 6   | Loop Start / Stop                               | <ul style="list-style-type: none"> <li>Start or stop sequential display.</li> <li>Display and fix at a channel: press the <b>Loop Start / Stop</b> key, a numeric key and <b>OK</b> to display and fix at the selected channel. Press <b>0</b> and <b>OK</b> to return to the last displayed channel.</li> </ul> |

| No. | Name   | Function  |
|-----|--------|---|
| 7   | Menu   | Switch to the setup menu.   |
| 8   | OK     | <ul style="list-style-type: none"> <li>Save settings in the Setup Menu.</li> <li>Display selected channels.</li> </ul>  |
| 9   | Shift  | <p>Switch among the 8 resolutions.</p> <ol style="list-style-type: none"> <li>Press the Shift key. The Green LED on the front panel flashes.</li> <li>Press No. 0 ~ 7 for the desired resolution within 30 seconds. <ul style="list-style-type: none"> <li>0 : VGA_640 x 480</li> <li>1 : VGA_1024 x 768</li> <li>2 : VGA_1280 x 768</li> <li>3 : VGA_1366 x 768</li> <li>4 : HDMI_480p</li> <li>5 : HDMI_720p</li> <li>6 : HDMI_1080i</li> <li>7 : HDMI_1080p</li> </ul> </li> </ol> <p>Note after the resolution is configured, the green LED will fade and GV-IP Decoder Box / GV-Pad will reboot automatically.</p> |
| 10  | INFO   | Shows the camera name and total number of cameras under display.  |
| 11  | SEARCH | Scan for available Access Points or wireless stations when wireless network is selected.  |

**Note:** The Shift key is only functional for GV-IP Decoder Box.

# 3 Connection

## GV-IP Decoder Box

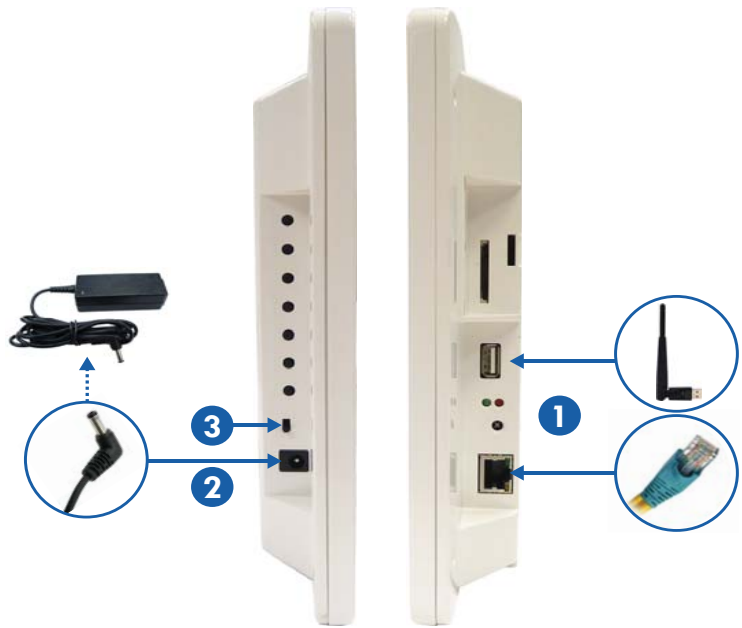


1. Connect a display device to VGA connector or HDMI connector for video output.
2. Connect the device to LAN.
  - A. For wired network, connect to a standard network cable.
  - B. For wireless network, insert a Wi-Fi USB adapter.
3. Connect to power using the supplied power adapter.
4. Turn the Power switch to ON.

### Note:

1. The GV-IP Decoder Box can only be connected to one display device through the HDMI or VGA connector.
2. The default video output is set to VGA with 1024 x 768 resolutions. If you use an HDMI monitor, be sure to configure the output type. To change the default setting or configure the output type, see 3.5 *Configuring the Accout, Storage and Output Type* in the *GV-IP Decoder Box and GV-Pad User's Manual* on software DVD.

## GV-Pad



1. Connect the device to LAN.
  - A. For wired network, connect to a standard network cable.
  - B. For wireless network, insert a Wi-Fi USB adapter.
2. Connect to power using the supplied power adapter.
3. Turn the Power switch to ON.



## 4 Configuring the Basics


After you have installed and connected the necessary cables, you are ready to configure the IP address, ID and password. The default IP address, ID and password of GV-IP Decoder Box / GV-Pad are as below:

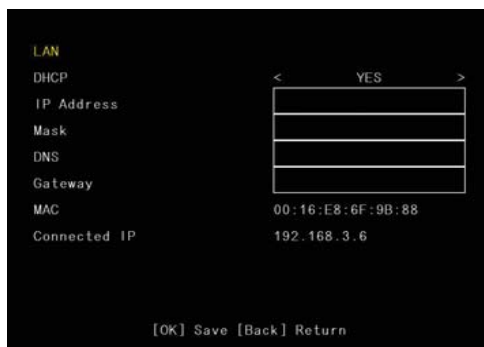
| Default Settings  |                                      |
|---|--------------------------------------|
| IP Address  | Randomly assigned by the DHCP server |
| ID & Password<br>(for logging in GV-GV-IP Decoder Box / GV-Pad from GV-IP Device Utility) | admin / admin                        |
| ID & Password<br>(for connecting GV-IP Decoder Box / GV-Pad and GV IP devices)            | admin / admin                        |

### Setting Up the Network

#### Wired Network Connection

If you have connected your device for a wired network connection, by default, the device will be **automatically assigned an IP address** by the DHCP server without further settings. To change the IP address to a fixed one, follow the steps below.


1. Select the  icon, select **LAN Setting** and press **OK**.
2. Select **NO** in the DHCP section and enter a fixed IP address, subnet mask and DNS and gateway.
3. Press **OK** to save the settings. When the device is connected to the Internet, the IP address will be shown in the **Connected IP** field.



#### Wireless Network Connection

A GV-WiFi USB Dongle is required to connect the device to wireless network. Follow the steps below to establish a wireless network connection.

**Note:** The GV-IP Decoder Box / GV-Pad only supports dynamic IP address assignment (DHCP) in a wireless network.

1. Select the  icon, select **WLAN Setting** and press **OK**.
2. Press the **Search** button to scan for available Access Points / wireless stations.
3. Select an Access Point / wireless station in the **ESSID** field and complete the settings below.



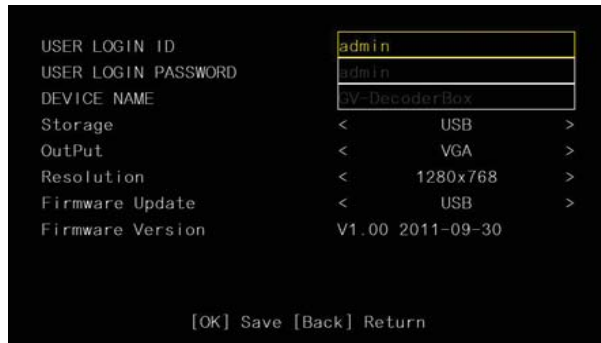
- **ESSID:** Shows the name of the Access Point. Press the left and right button to select an Access Point.
  - **Quality:** Shows the connection quality on a scale of 1 to 100 with 100 being the highest quality.
  - **AuthMode:** Select WEP Auto or WPAPSK according to the encryption setting of the Access Point.
  - **EncryMode:** Select the Encryption Mode according to the encryption setting of the Access Point.
  - **Password:** Type a password to match the Access Point. You can type up to 26 characters.
4. Press **OK** to save the settings and connect to wireless LAN. When the device is connected to the Internet, the IP address will be shown in the **Connected IP** field.

## 5 Displaying Channels from GV IP Devices

### Configuring the ID and Password

#### For logging in GV-IP Decoder Box / GV-Pad

1. On the main menu, select the  icon and press **OK**. This window appears.



2. Type the ID and password and press **OK** to confirm. The maximum number of characters is 14.

#### For connecting GV IP devices


1. On the main menu, select the  icon and press **OK**. This window appears.

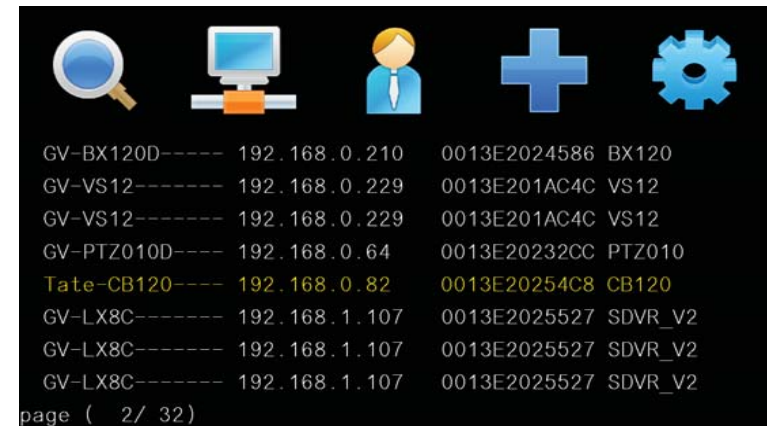


2. Type the ID and password and press **OK** to confirm. The maximum number of characters is 15.

Use the search feature on GV-IP Decoder Box / GV-Pad to display channels of GV IP devices installed under the same LAN.

**Note:** The GV-IP Decoder Box / GV-Pad can decode a total of 64 channels from GeoVision and third-party IP devices.

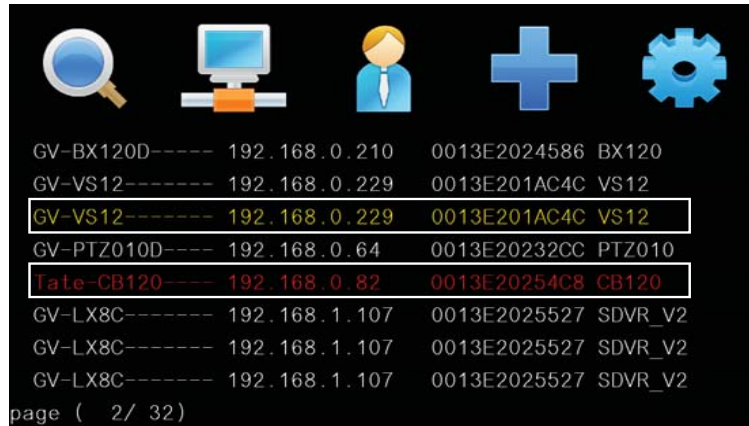
1. Be sure your GV IP devices:
  - are under same LAN with the GV-IP Decoder Box / GV-Pad.
  - have the same ID and password set on the GV-IP Decoder Box / GV-Pad for IP channel connection. For detail, see *Configuring the ID and Password, 4. Configuring the Basics*, in the *Quick Start Guide*.
  - have the same VSS port with the NVR port of the GV-IP Decoder Box / GV-Pad. The default value is **10000**.
2. Select the  icon and press **OK**. The GV IP devices under the same LAN will appear on the Device List.






## 6 Displaying Channels Using GV IP Device Utility

- To move the cursor (shown in yellow), press the up and down arrow keys. To select a channel, press the right arrow key (shown in red).



- Press the **OK** key, the selected channels will be displayed.

### Note:

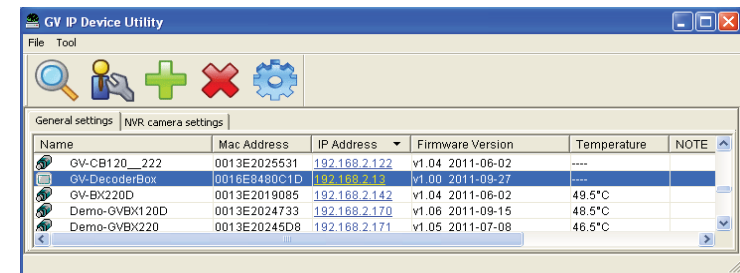
- When the system idles over 30 seconds or resumes after power interruption, the GV-IP Decoder Box / GV-Pad will automatically display channels based on the last successful settings.
- Every time when the search function  is performed, any channels selected previously on the Device List will be unselected.

To add third-party IP channels, see 6. *Displaying Channels Using GV IP Device Utility* in the *Quick Start Guide*.

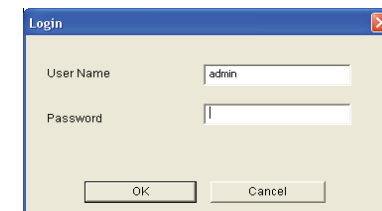
To access the channels connected to GV-System, see 2.6 *Displaying Channels from GV-Mobile Server* in *GV-IP Decoder Box and GV-Pad User's Manual* on software DVD.

You may use the GV IP Device Utility to add channels from GV IP devices, GV-Mobile Server and third-party IP devices that adhere to RTSP, ONVIF or PSIA. The GV IP Device Utility is available on software DVD.

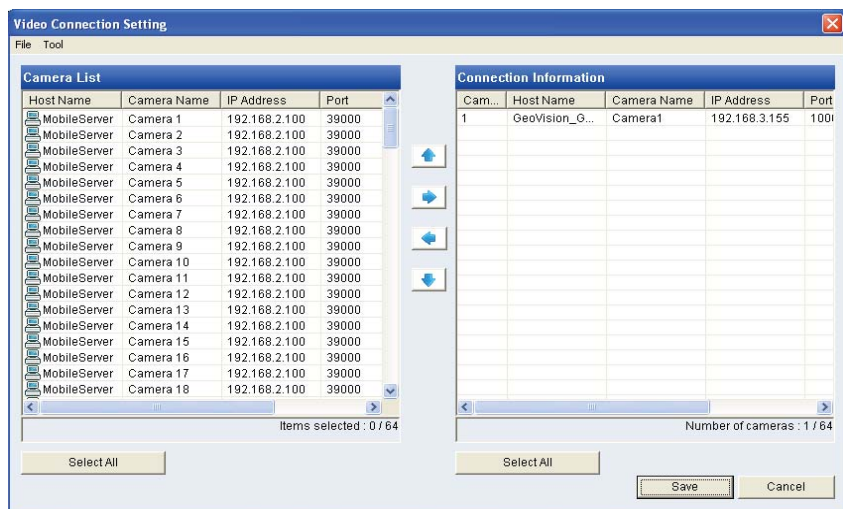
- Make sure your GV IP devices, GV-System or third-party IP devices are under same LAN with the GV-IP Decoder Box / GV-Pad.
- Install the GV IP Device Utility in a computer under the same LAN with GV-IP Decoder Box / GV-Pad. Run the GV IP Device Utility. It will automatically search for all the channels from GV IP devices and from GV-System under the same LAN.




- Click on the IP address of your GV-IP Decoder Box / GV-Pad and select **Connect Setting**. This dialog box appears.



- Type the ID and password of your GV-IP Decoder Box / GV-Pad and click **OK**. For detail, see *Configuring the ID and Password, 4. Configuring the Basics* in the *Quick Start Guide*. The Video Connection Setting window appears.

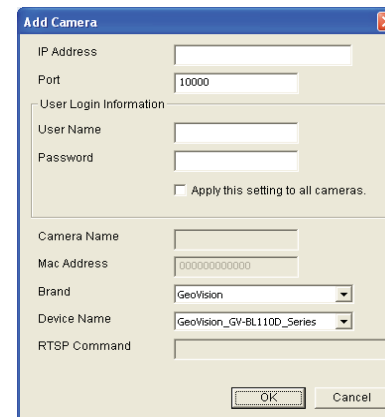


5. To connect to a GV IP device or device from GV-System, use the **right**  button to add the device to the Connection Information column.

**IMPORTANT:** To connect to GV-Mobile Server channels, make sure you have run and configured the GV-Mobile Server. For setup details, see *2.6 Displaying Channels from GV-Mobile Server in GV-IP Decoder Box / GV-Pad User's Manual on Software DVD*.

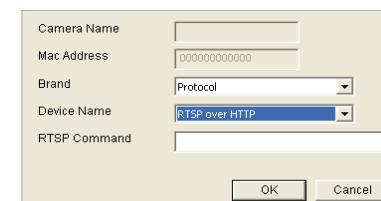
6. Right-click the added channel, select **Edit** and type the username and password of the channel to log in. By default the login username and password both are **admin** in all GV IP devices.
7. To add a third-party IP camera, follow the steps below.

A. Click **Tool** on the left corner of the Video Connection Setting window, and select **Add Camera**. This dialog box appears.



B. Type the IP address, user name and password of the device.

C. Select **Protocol** for Brand and one of the following protocol for Device Name. Type the RTSP command if required. Refer to your third-party IP camera's manual for this information.



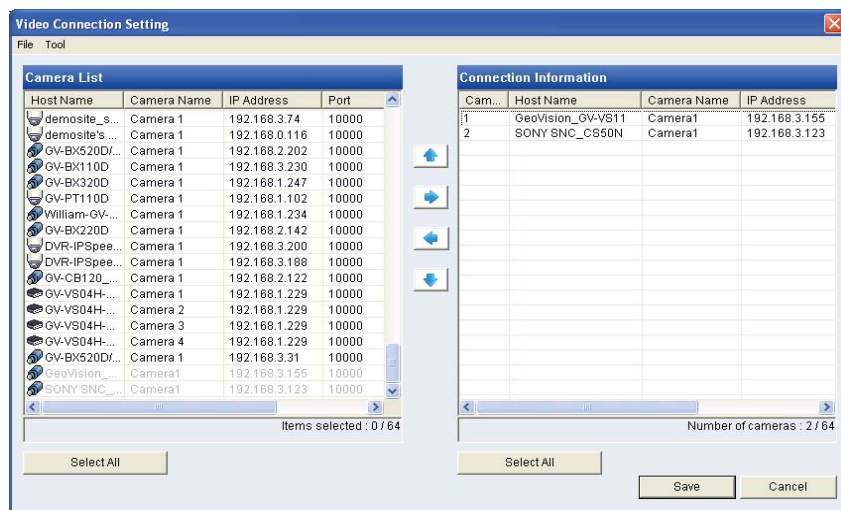
- **ONVIF:** Select this protocol if your camera adheres to ONVIF.
- **PSIA:** Select this protocol if your camera adheres to PSIA.
- **RTSP over HTTP:** The RTSP protocol uses an HTTP port for data streaming from the IP camera.
- **RTSP over TCP:** The RTSP protocol uses a TCP port for data streaming from the IP camera.
- **RTSP over UDP:** The RTSP protocol uses a UDP port for data streaming from the IP camera.



## 7 Taking a Snapshot

D. For **ONVIF** and **PSIA**, modify the Port to **80**, else keep the port in default.

|      |    |
|------|----|
| Port | 80 |
|------|----|

E. Click **OK**. The camera is added to the list.





- Use the **up**  and **down**  buttons to move the added channels up and down the Connection Information list. The channels will be displayed according to this order.
- Click **Save**. The cameras on the Connection Information column will be updated to the GV-IP Decoder Box / GV-Pad and displayed on the monitor.

The security administrators can capture images when events occur. Snapshot images are automatically saved to an inserted storage device such as a USB drive or SD card in JPEG format.

Before you start, be sure:

- you have at least 30 MB of space on your storage device.
- you have inserted a USB drive or SD card for storage.
- the storage type is correctly configured.

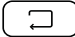

Otherwise, the error icon  appears when attempting to capture an image.

- On the main menu, select  and select the inserted storage device in the **Storage** field.
- Press the **(REC)** key to capture the image. A camera icon appears at the top right corner of the monitor and 3 consecutive snapshots will be taken and saved to the inserted storage device.




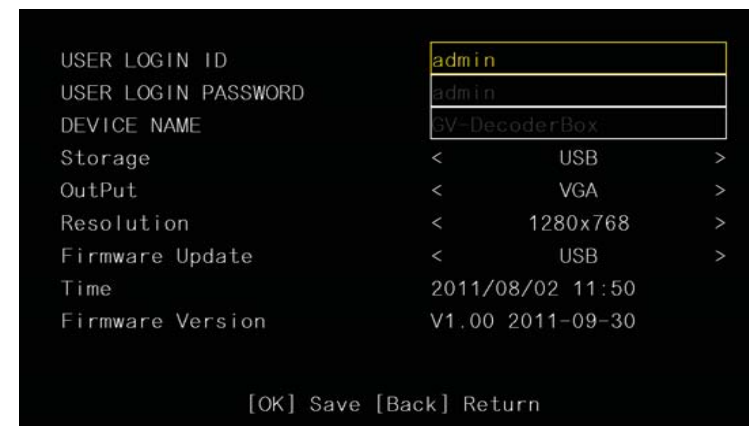
## 8

## Pausing the Looped View

You can pause the looped view at a single channel. To pause the looped view, press the  key. A loop sign with a cross will appear on the top-right corner of the display channel. To resume to the looped view, press the  key again.



1. Copy the firmware file to the root folder of a USB storage device or a SD card.
2. Connect the USB drive or SD card to the GV-IP Decoder Box / GV-Pad.
3. On the setup menu, select  and press **OK**. This window appears.



4. In the **Firmware Update** field, select **USB** or **SD** storage that stores the firmware file.
5. Press **OK**. The firmware upgrade runs automatically, and the GV-IP Decoder Box / GV-Pad will restart after the firmware upgrade is completed.

## 9

## Upgrading the Firmware

We will periodically release the updated firmware on the website. You may choose to update firmware locally using a USB drive or SD card

To upgrade the firmware remotely through GV IP Device Utility, see 3.6.2 *Upgrading Firmware through GV IP Device Utility* in *GV-IP Decoder Box and GV-Pad User's Manual* on software DVD.

Before you start, be sure:

- the storage device (USB drive or SD card) contains one firmware file only.
- the USB drive or SD card has at least 100 MB of free space.



9F, No. 246, Sec. 1, Neihu Rd., Neihu District, Taipei, Taiwan

Tel: +886-2-8797-8376 Fax: +886-2-8797-8335

support@geovision.com.tw

http://www.geovision.com.tw