

mart cart [®] **XTi 24** [™]

Owner's Manual

Industrial

**Ergonomic "User-Friendly"
Hand Controls**

Date Manufactured:

____/____/____

- ☐ **Mart Cart XTi[®] 24**
Model 03522 - SKU# 280-3522
- ☐ **Mart Cart XTi[®] 24**
Model 03524 - SKU# 280-3524



Patent Pending

CONGRATULATIONS

You have just purchased the best electric shopping cart on the market today. The XTi 24 incorporates the very latest in technological advances. To assure you of the best and safest performance as well as longest life, please read the enclosed information. After reading this manual, should you have a service problem or need help, please call our customer service department with the serial number of your cart, at our toll free number: 1-800-548-3373 or (479) 636-5776.

TO ORDER PARTS CALL: (479) 636-5776 or 1-800-548-3373

Be sure to give the serial number to the service department personnel. The XTi 24 serial number is located on the seat support tube under the seat as shown in Figure #4 (see page 7) of this manual.

TERMS: All parts will be shipped with check in advance or C.O.D. Commercial accounts are allowed 15 day terms from date on invoice with approved credit.

FREIGHT: All freight will be paid by the customer. Special consideration will be given to items under warranty coverage.

IMPORTANT DOCUMENT — DO NOT DISCARD

Serial Number:

Date Shipped:

NOTE: Specifications found in this manual subject to change without notice.
FOR COMMERCIAL USE ONLY. NOT FOR PERSONAL USE.

TABLE OF CONTENTS

| | | | |
|---------------------------------------|-------|------------------------------|--------|
| Limited Warranty | Pg. 2 | Variable Speed Control | Pg. 6 |
| Warnings | Pg. 3 | Circuit Breaker..... | Pg. 6 |
| Recommended Operating Procedures..... | Pg. 3 | Charging | Pg. 6 |
| Freight Damage..... | Pg. 3 | Control Box..... | Pg. 6 |
| Attention | Pg. 3 | XTi 24 Exploded View | Pg. 7 |
| Daily Maintenance Check List..... | Pg. 4 | XTi 24 Control Box | Pg. 8 |
| Battery Charging | Pg. 4 | XTi 24 Wiring Diagram | Pg. 9 |
| Battery Replacement..... | Pg. 5 | XTi 24 Wiring Schematic..... | Pg. 10 |
| Seat Lock | Pg. 6 | XTi 24 Labels | Pg. 11 |
| Seat Switch | Pg. 6 | | |

LIMITED WARRANTY

For the XTi 24

A. Parts & Charger: Two-year warranty from date of shipment.

B. Battery: Twelve full months from date of shipment. Replacement batteries carry a six-month warranty. Must provide serial number of cart. Charging the battery for 24 hours is required to determine that actual replacement is needed.

C. Labor: One-year limited warranty.

Parts-Limited Warranty—All parts, except upholstery, chair armrests, circuit breakers needing resetting, and broken keys in switches, are warranted by the manufacturer to be free from defects in material and workmanship for a period of two years from date of shipment. This warranty does not include wear and tear caused by above normal usage, abuse, negligence, freight damage, or damage caused by improper use or care, or by outside sources such as fire, floods, etc.

If component has failed due to defect in material or workmanship, it will be replaced or repaired at the manufacturer's discretion at no charge to the owner.

Labor—The manufacturer will cover labor charges for work performed in the field for one year from the date of shipment as a result of defect in materials and workmanship. Charges incurred for resetting the circuit breaker, seat, seat armrests and broken keys in switches are exempted. Double service calls due to improper first call service or lack of repair parts are exempted.

The above warranties exclude shipping, handling, or travel expenses incurred for the repair of said cart or parts as well as items worn out through normal use whose malfunction is not attributable to defect.

All warranty claims should be called in to **(800) 548-3373 or (479) 636-5776**. Ask for service. Please provide serial number for warranty verification when requesting service.

— Important Safety Instructions —

Please read before operating.

WARNINGS

- Never attempt to charge the battery in this cart without using an electrical outlet that is protected by a GFCI, (Ground Fault Circuit Interrupter).
- Replace charging cord if plug is damaged or if the cord is worn or frayed.
- Never use the charging cord without proper grounding. Do not use if plug does not have three terminals.
- Always disconnect power before servicing.
- See page 4, “Daily Maintenance Checklist,” and follow instructions.
- Cart can roll. Enter and exit cart with care.

RECOMMENDED OPERATING PROCEDURES

- New carts may need charging! Charge batteries for 24 hours prior to first use.
- **THIS CART IS FOR USE INDOORS/OUTDOORS ON HARD LEVEL SURFACE ONLY.**
- **DO NOT STAND ON CART.** (See “Operating & Warning Instructions” on cart).
- After batteries are charged, disconnect power supply cord before operating cart.
- **DO NOT** exceed the load limitations as shown on the cart.
- Return power cord to circular cavity when not charging
- **DO NOT** allow children to operate or play on cart. Keep cart secured with key (if applicable), at service counter.

FREIGHT DAMAGE

CHECK:

- The shipping carton for any visible damage. Report the damage to the freight carrier immediately. File a claim with the carrier if actual damage to your cart has occurred.
- Contents of the carton. The contents should agree with the information listed on the packing list. Report any discrepancy to the carrier and the factory immediately.

ATTENTION

- It is the responsibility of the owner of this cart to maintain the cart in a safe and reliable operating condition at all times.

DAILY MAINTENANCE CHECK LIST

For optimum cart availability and performance, the following items should be checked daily:

- **ELECTRIC CORD** — Replace cord if cord is worn or frayed, 3-pronged plug is broken or reel will not retract. Be sure power outlet provides protection through an operating “Ground Fault Circuit Interrupter” (GFCI).
- **SEAT AND MOUNTING** — Tighten if necessary. If cracks or rust occur, or if seat rocks loosely, replace at once. Lubricate tracks with Vaseline as required.
- **SEAT SWITCH** — Test and replace if not working properly. Cart must stop when weight is removed from seat.
- **THROTTLE** — Test for smooth “start, acceleration, deceleration, and stop.” Repair if necessary. Charge or replace battery if needed.
- **ANTI-TIP CASTERS** — Replace if broken. Maintain height adjustment of 3/8" to 1/2" above floor level.
- **GENERAL** — Repair or replace any component that would cause a potential safety hazard.
- **APPEARANCE** — Wipe off and clean as needed for customer satisfaction and for store’s public image.

BATTERY CHARGING

- Install a Ground Fault Circuit Interrupter (GFCI) in the electrical circuit wherever the cart is to be charged. This is to protect against any possible shock hazard.
- AC voltage required is 120V AC. The current draw is 1.5 amps. The charger output will be 3 amps constant current, DC, to the batteries.
- **Charge batteries every night, all night, and at every opportunity.** When the batteries are fully charged, the charger will maintain a “float voltage” which will not damage the batteries.
- One complete charge will allow up to 5 days of normal shopping operation before batteries are completely discharged. Fully discharged batteries will take 20 hours to fully charge, so it is best not to let the batteries become completely discharged.
- **Do not store the cart with discharged batteries for more than 30 days, as this can cause premature battery failure. Fully charge the batteries at least every 30 days, if in a low usage location.**
- To determine if the charger is working properly, remove the rear cover, plug the charger into a GFCI protected line. The Charger light should be orange, if charging, and green if the batteries are fully charged.
- No maintenance of batteries is required. The batteries are maintenance free and water cannot be added.

Note: Under normal conditions, the batteries will last 18 months or longer if the above recommendations are followed. Replace with original Mart Cart batteries only. Mart Cart is not responsible for any adverse effects caused by replacement with any other type of batteries.

IMPORTANT: Your cart has been equipped with gel-cell batteries during the manufacturing process as original equipment. The manufacturer recommends that you replace the original batteries only with the same type and rating to prevent damage to your cart’s internal components, charging system, or personal injury to you and your customer.

BATTERY REPLACEMENT

Be Responsible: Recycle old batteries or dispose of according to local or national codes.

• **Note:** If the cart needs to be moved without the power on or if the battery is low, the friction disc can be released. “Disengage” by pulling out on the “T” handle and turn it 90 degrees (Figure #1).

DISENGAGED

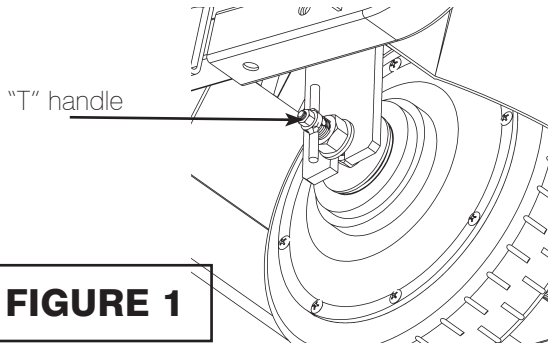


FIGURE 1

ENGAGED

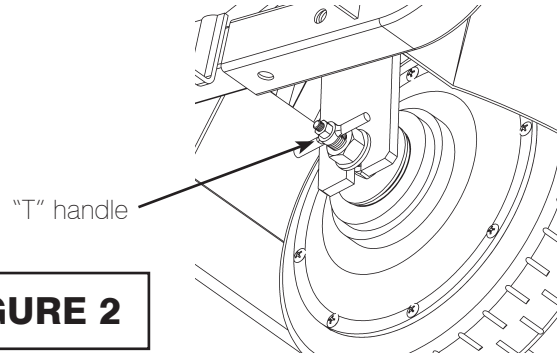


FIGURE 2

The friction disc must be “Engaged” for normal cart operation as seen in Figure #2.

To Replace Batteries: (Read precautions on battery - avoid any sparks)

1. Turn off key switch and remove key. Disconnect charger cord from wall outlet, if plugged in.
2. Reach under right rear of cover and lift latch (Figure #3), then tilt chair forward.
3. Pull cord out from cover; the rear cover can then be removed.
4. Remove tie down strap from batteries.
5. Disconnect the negative and positive wire bundles from the battery posts and remove the batteries.

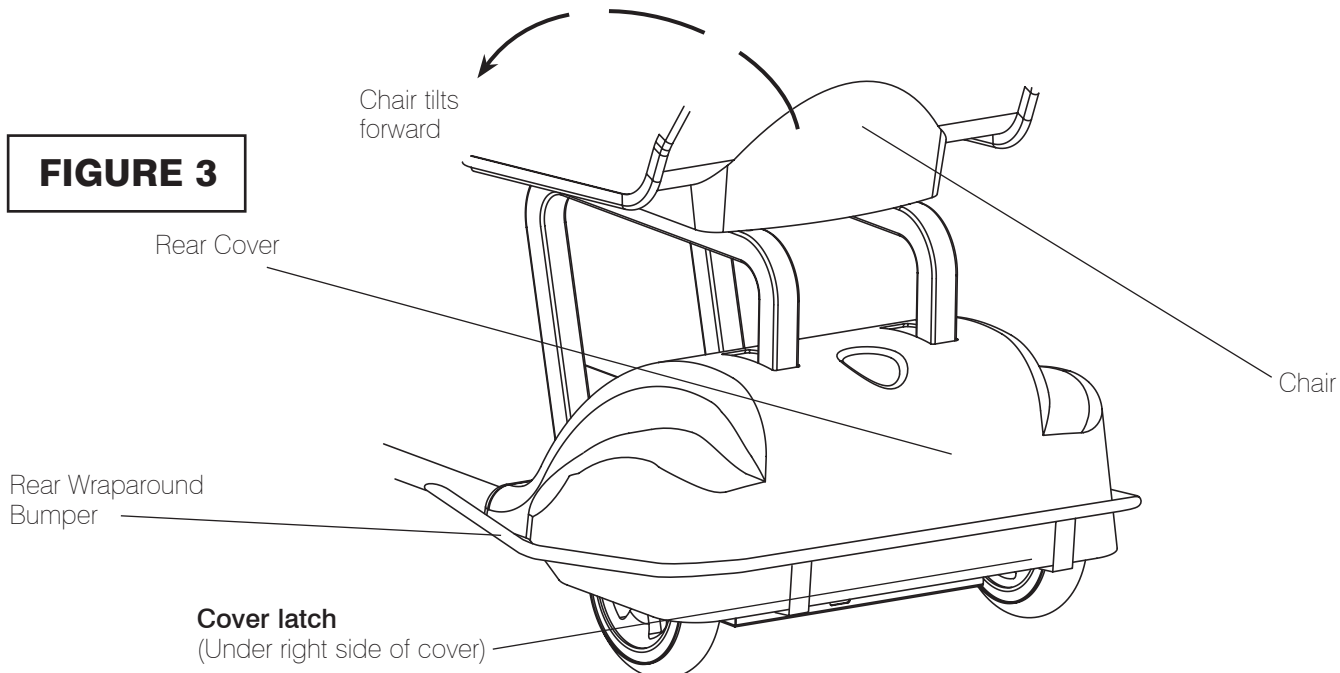
CAUTION: Do not cross battery posts with metal object!

6. Connect the red leads to the positive post (+) first. Connect the black leads to the negative post (-).
Reposition protective cover over positive post.

WARNING: Reversing battery connections may damage motor controller!

7. Secure batteries with strap. Tilt down chair.
8. Before reinstalling cover, check wheel condition, and general condition of the chair.
9. Reinstall rear cover and tilt chair back.
10. Test cart for proper operation. Charge batteries if necessary.

FIGURE 3



SEAT LOCK

For XTi 24 with sliding seat.

- The seat lock and the chair should be inspected daily for proper function. The release/locking arm should move freely and spring back into locking position. If return spring is broken, **DO NOT USE** cart until spring is replaced.

SEAT SWITCH

- The seat switch is located under seat. Pressure (weight) on the seat closes the control circuit, and allows the cart to operate.

VARIABLE SPEED CONTROL

- The cart's speed is regulated by a potentiometer. This provides extremely smooth acceleration from 0 to 4 MPH, and is located in the control box on the steering column.

CIRCUIT BREAKER

- The circuit breaker is designed to protect your electrical system from transient overloads or electrical shorts. Either could cause serious damage without a circuit breaker to open the circuit.
- The circuit breakers are a manual reset type. Each requires manual resetting once it has been tripped. They are located underneath the left rear cover of the cart (see Figure 4, page 7).

CHARGING

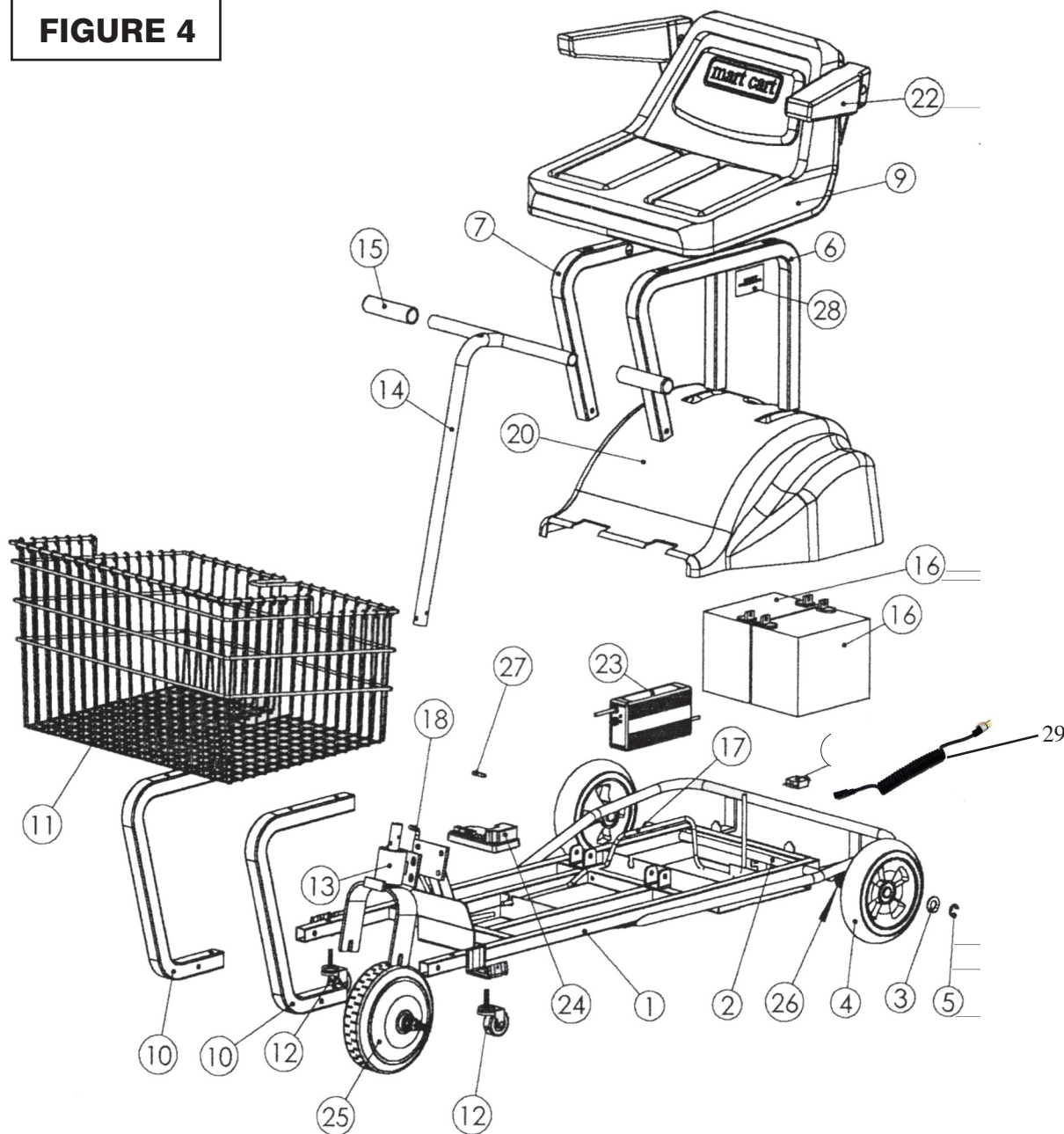
- **HOW IT WORKS:** When the power supply cord is plugged into the store's electrical outlet the battery charger is energized. The charger sends approximately 29 volts to the batteries for charging. A third wire (yellow) from the charger output inhibits the PWM until the power to the charger is disconnected. The motor circuit is interrupted until charging is complete.
- **CHARGING:** The cart will not move under power when the battery is being charged. If the cart moves while plugged in, check the power to your outlet before calling for service.

CONTROL BOX

- The master control box for the XTi 24 is located on top of the steering column. It contains the "Stop/Run/Horn" switch, and key switch (optional keyless system available).
- The cover can be removed by removing the four bottom screws.

XTI 24 EXPLODED VIEW

FIGURE 4



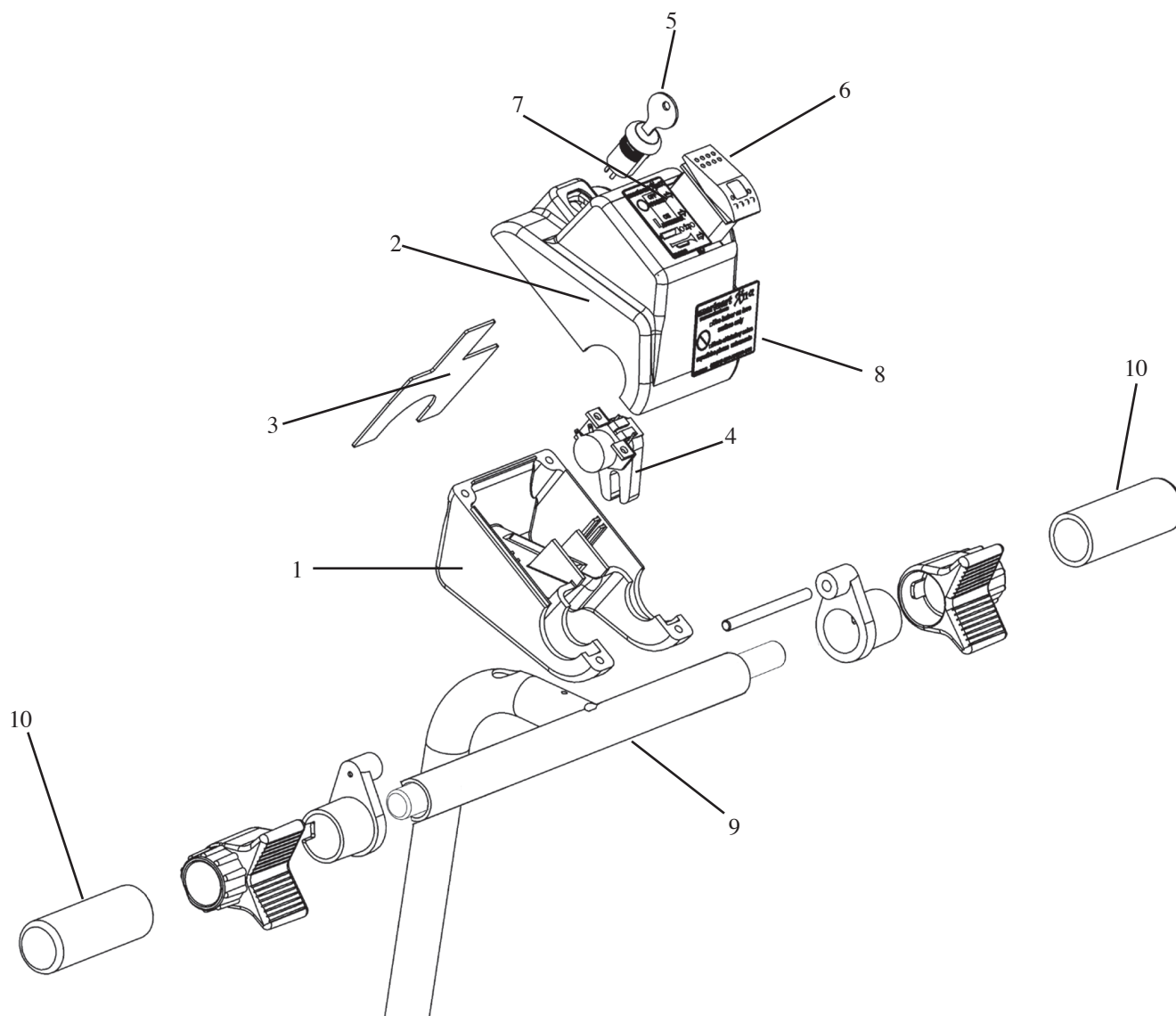
280-3522-00

280-3524-02

280-3534-00

| Item | Part # | Description | Item | Part # | Description | Item | Part # | Description |
|------|----------|------------------------------|------|----------|-----------------------|------|----------|-----------------------|
| 1 | 280-1250 | Main Frame | 13 | 280-1269 | Fork Assembly | 24 | 280-1445 | PWM Controller |
| 2 | 280-1259 | Axle, 5/8" Rear | 14 | 280-1024 | Steering Column | 25 | 280-1342 | Hub Motor/Wheel |
| 3 | 000-1224 | Bushing | 15 | 290-1138 | Grip, Black, 1" | 26 | 280-1335 | Grommet |
| 4 | 280-1268 | 8" Wheel, Plastic Mag | 16 | 280-1214 | Battery, 33 AMP | 27 | 290-1099 | Fuse, 1 Amp |
| 5 | 000-1075 | 5/8" "E" Type Retaining Ring | 17 | 280-1276 | Main Wire Harness | 28 | 200-1149 | Decal, Serial Number |
| 6 | 280-1262 | Seat Mount Tube, LH | 18 | 280-1278 | Steering Wire Harness | 29 | 280-1494 | Charging Cord, Coiled |
| 7 | 280-1261 | Seat Mount Tube, RH | 19 | *Color | Floor Cover | | | |
| 8 | 200-1228 | Circuit Breaker, 15 AMP | 20 | *Color | Cover, Rear | | | |
| 9 | 200-1551 | Mart Cart Seat | 21 | *Color | Cover, Front | | | |
| 10 | 280-1264 | Basket Tube | 22 | 280-1280 | Armrest Set | | | |
| 11 | 200-1802 | Basket, LIL Max | 23 | 290-1021 | 24 VDC Charger | | | |
| 12 | 200-1052 | 2" Caster | | | | | | |

XTI 24 CONTROL BOX



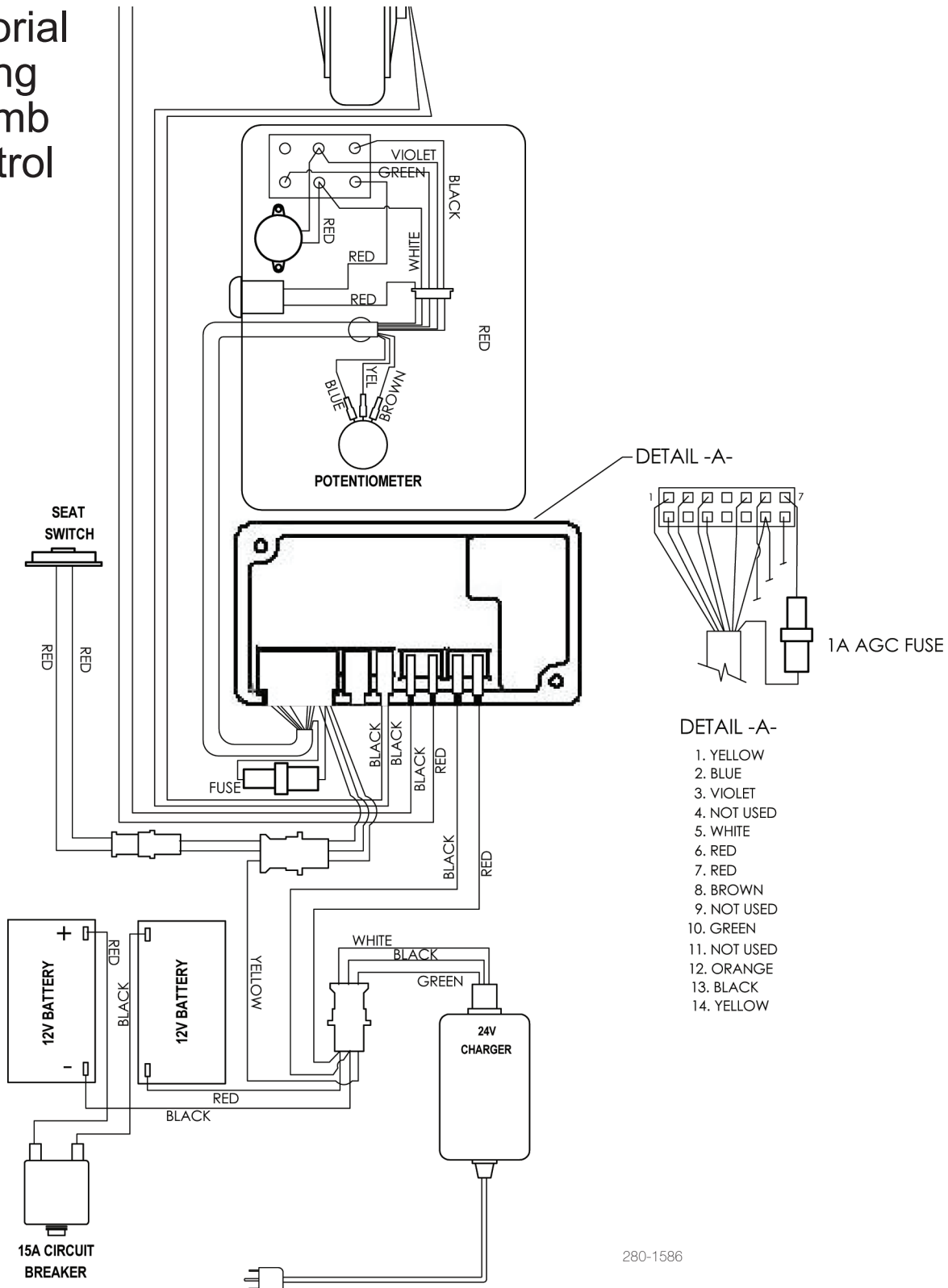
| Item | Part # | Description | Item | Part # | Description |
|------|----------|--------------------------|------|----------|-------------------------------|
| 1 | 280-1178 | Control Box Bottom Cover | 8 | 280-1574 | Front Control Box Overlay |
| 2 | 280-1177 | Control Box Top Cover | 9 | 280-1199 | Steering Column w/Rod & Grips |
| 3 | 280-1184 | Control Box Divider | 10 | 280-1170 | Vinyl Grip (Black) |
| 4 | 280-1588 | Potentiometer Assembly | | | |
| 5 | 200-1640 | Key Switch | | | |
| 6 | 280-1407 | Rocker Switch Assembly | | | |
| 7 | 280-1180 | Top Control Box Overlay | | | |

Control Box Kits

| Part # | Description |
|----------|------------------------------------|
| 280-1592 | Control Box, Keyless (1-4, 6-8) |
| 280-1593 | Control Box, Keyed (1-8) |
| 280-1594 | Control Box Top, Keyless (2,4,6-8) |
| 280-1595 | Control Box Top, Keyed (2, 4-8) |
| 280-1596 | Box Top with Decals (2,7,8) |

XTi 24 WIRING DIAGRAM

For XTi 24 Pictorial Wiring Thumb Control

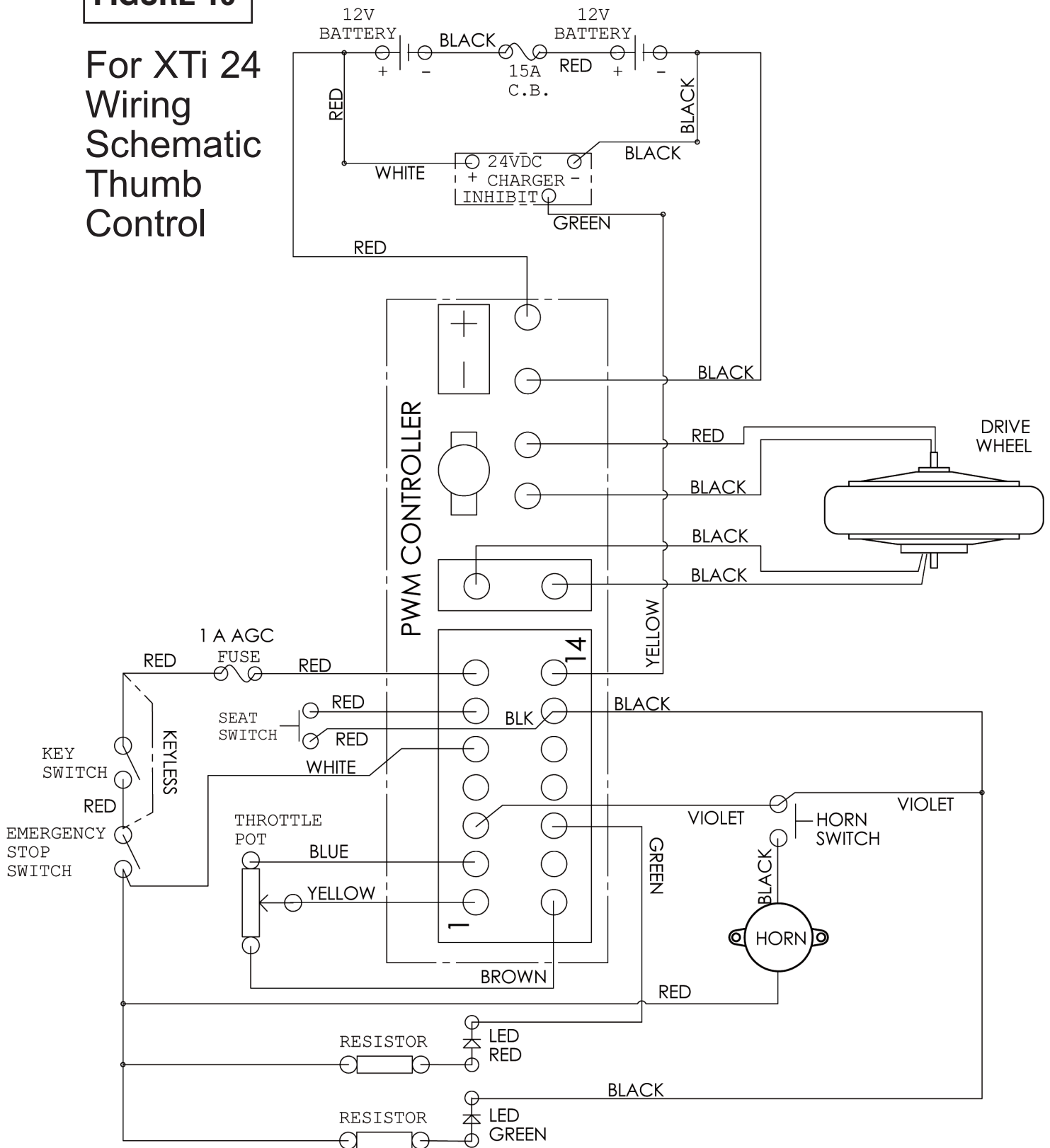


280-1586

XTi 24 WIRING SCHEMATIC

FIGURE 10

For XTi 24 Wiring Schematic Thumb Control

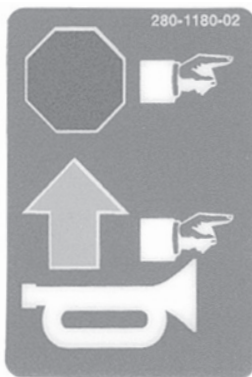


280-1587

XTi 24 LABELS

Note: All labels on this page are not to scale.

Part numbers in gray box



DO NOT STAND ON BUMPER

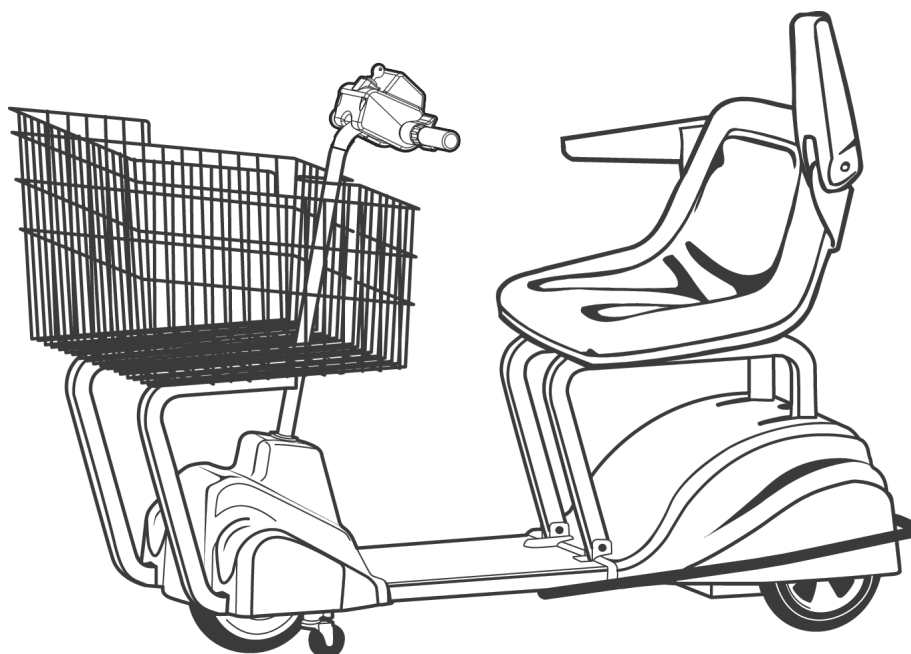
280-2103



Labels are subject to alterations

IMPORTANT DOCUMENT — DO NOT DISCARD

XTiTM24



Patent Pending

mart cart[®] XTiTM24

Is a quality product line of
Assembled Products[™] Corporation

1-800-548-3373

115 E. Linden • Rogers, Arkansas 72756 USA
Phone: (479) 636-5776 • Fax: (479) 636-3245
Web site: www.assembledproducts.com