



OIL BARREL PUMP

OPERATOR'S MANUAL



NEED HELP?

(206) 453-6776

www.arestool.com

customerservice@arestool.com

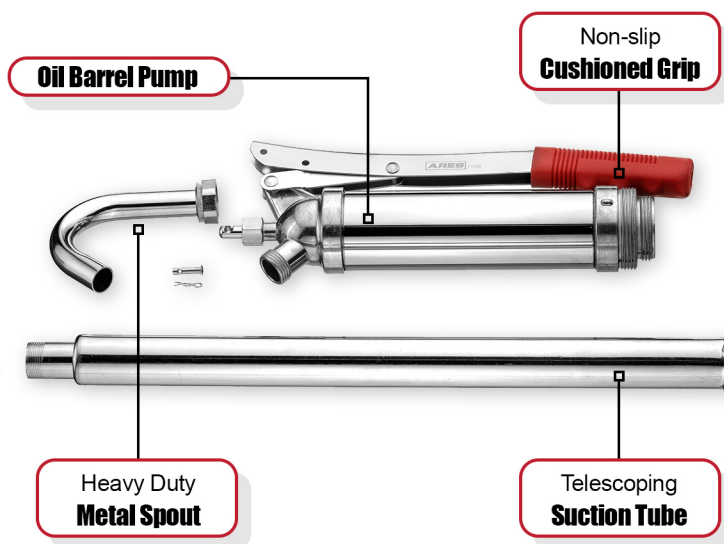
Don't forget to register your product!

Get to Know Your Oil Barrel Pump

Our **Oil Barrel Pump** is designed for the fast transfer of Non-Corrosive Fluids such as, Heating Oil, Motor Oil, Transmission Fluid, Automotive Additives (Oil Based), Light and Heavy Oils, Soaps and more! The long lever's cushion grip handle assures firm grip and increased leverage which helps to develop more pressure with less effort, and the self-adjusting suction tube design allows for flexible dispensing and operation. This pump is designed to deliver base oil, transmission oil and heavier fluids at a rate of 250 CC's (8.45 oz.) per stroke and features a 2-piece telescoping suction tube that's designed to fit 15-55 gallon drums with a 1-1/2-inch or 2-inch bung. The heavy duty removable metal spout is threaded to fit all garden hoses.

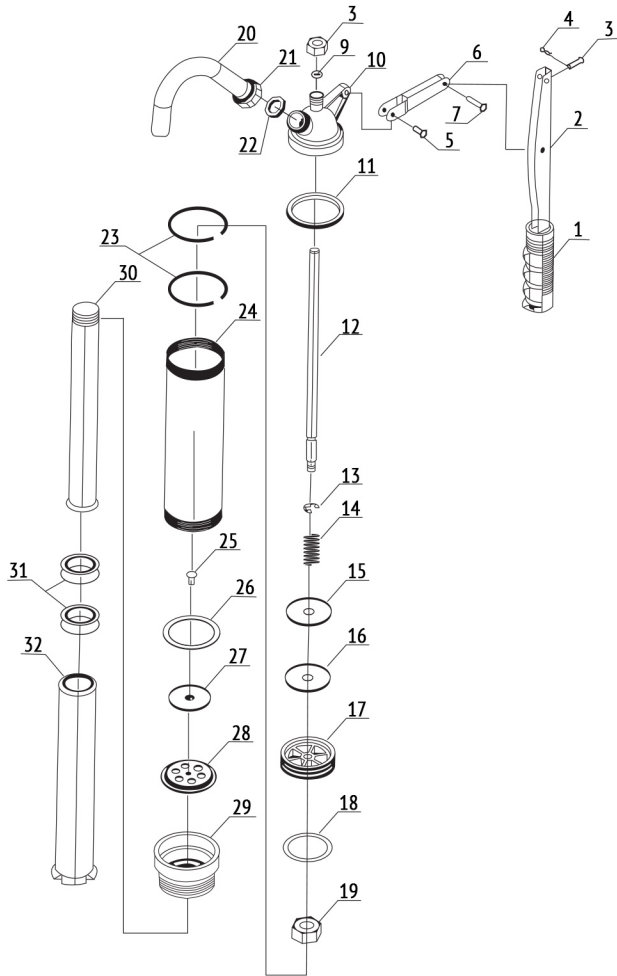
Set Includes:

- Oil Barrel Pump
- Telescoping suction tube
- Heavy duty removable metal spout



OIL BARREL PUMP

OPERATOR'S MANUAL



DESCRIPTION	QUANTITY
1 VINYL GRIP	1
2 HANDLE	1
3 HANDLE RIVET	1
4 SPLIT PIN	1
5 LEVER RIVET	1
6 HANDLE LEVER	1
7 LEVER RIVET	1
8 ROD NUT	1
9 ROD SEAL	1
10 PUMP HEAD	1
11 BARREL GASKET	1
12 PISTON ROD	1
13 C RING	1
14 VALVE SPRING	1
15 VALVE PLATE	1
16 VALVE SEAL	1
17 VALVE BASE	1
18 PLUNGER RING	1
19 VALVE NUT	1
20 SPOUT	1
21 COUPLING NUT	1
22 SPOUT SEAL	1
23 BRASS RING	2
24 BARREL	1
25 BASE PLATE RIVET	1
26 FOOT VALVE SEAL	1
27 BASE PLATE A	1
28 BASE PLATE B	1
29 BASE	1
30 TELESCOPIC TUBE S	1
31 TELESCOPIC TUBE SEAL	2
32 TELESCOPIC TUBE L	1

Prep:

Read these instructions carefully before using your Oil Barrel Pump.

1. Loosen (8) ROD NUT properly.
2. Pull (12) PISTON ROD through (10) PUMP HEAD to meet and join the HOLE of (1) HANDLE with (3) HANDLE RIVET.
3. Re-tighten the (8) ROD NUT properly.
4. Assemble (20) SPOUT unit through (21) COUPLING NUT into the output of (10) PUMP HEAD. Adjust SPOUT to proper direction and tighten it.
5. SCREW (30)(31) TELESCOPIC TUBE unit into female thread of (29) BASE and tighten it.
6. Open the cap of the drum. Extend (30)(31) TELESCOPIC TUBE unit to utmost length. Put whole set of pump into drum, and tighten (29) BASE to the open end of the drum.

Important:

1. Re-Adjust the (8) ROD NUT after assembly to ensure that it is tight
2. Oil may not flow from barrel for the first few strokes due to air pockets; after air pocket is expelled oil should flow freely

OIL BARREL PUMP

OPERATOR'S MANUAL

Operation:

Read these instructions carefully before using your oil barrel pump.

1. Screw hose into spout if desired.
2. Pump handle to transfer oil from barrel into your desired container.

Maintenance:

1. Clean your barrel pump thoroughly before and after each use by wiping excess grease off with a clean, dry cloth. Cover the pump with a clean, dry cloth when not in use to prevent dust or debris buildup.
2. Disassemble and store barrel pump parts horizontally in a cool, dry place to ensure that all parts are aligned and complete.

Troubleshooting:

If fluid isn't coming out of the barrel pump, there may be air pockets present in the device. Try the following steps to fix the issue

1. Make sure you've adjusted (8) ROD NUT to proper tightness after assembling the pump.
2. It's normal for first few strokes to output mostly or all air. Pump a few times to expel any air pockets, and you should be at peak fluid output in no time.

Additional Grease Products:

We offer a wide range of grease products including accessory kits, flex hoses and more! These items can be found on Amazon or our web store under these part numbers:

71035	Mini Grease Gun & Accessories	71041	12" Grease Gun Flex Hose
71036	Professional Lever Action Grease Gun	71042	18" Grease Gun Flex Hose
71037	Economy Lever Action Grease Gun	71043	24" Grease Gun Flex Hose
71038	Oil Barrel Pump	71044	Grease Gun Coupler
71039	Suction Grease Gun	71045	8pc Grease Gun Accessory Set
71040	Pistol Grip Grease Gun	71046	3pc Grease Gun Flex Hose Set

OIL BARREL PUMP

OPERATOR'S MANUAL

You are backed by the ARES Tool Performance Assurance!

ARES TOOL warrants this product to be free from defects in materials and workmanship under normal use and service. A defective product may be returned for a free replacement within 90 days from the date of purchase, provide that product is returned immediately after discovery of defect. This warranty shall be valid only when proof of purchase (receipt) showing the date of purchase accompanies the defective product.

Exclusions:

These warranties exclude blades, bits, punches, dies, bulbs, fuses, batteries, and other consumables which must be replaced under normal use and service. These warranties shall not apply to any product or part which is used for a purpose for which it is not designed, or which has been repaired or altered in any way so as to affect adversely its performance or reliability, nor shall these warranties apply to any product or part which is subject to misuse, neglect, accident, or wear/tear incident to normal use and service.