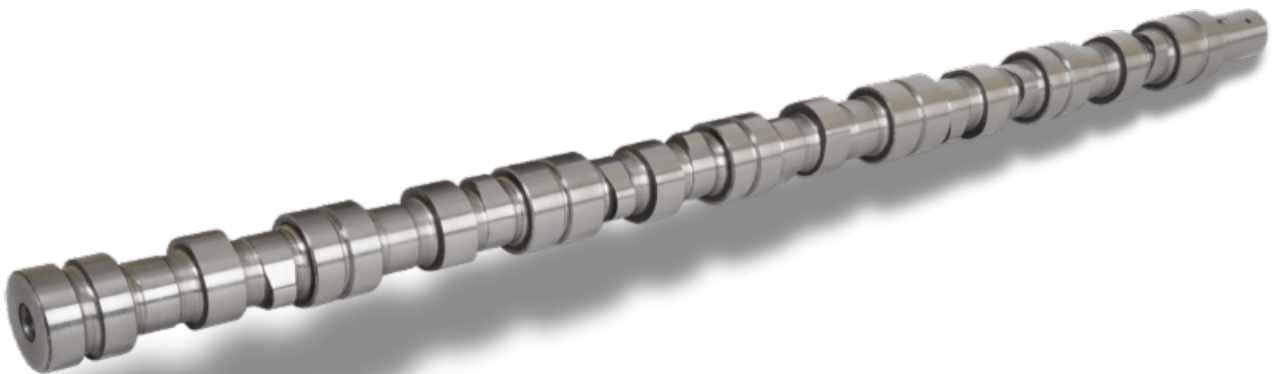


AFA OFFERS THE NEWEST DESIGN CAMSHAFT FOR THE 855 BIG CAM CUMMINS ENGINES

Although an older design engine, AFA considers the quality of the parts for this older engine as important as a brand new design engine. *An important consideration that our competitors often ignore by offering lower quality parts because of the age of the engine.*

Our camshafts are made from the highest quality materials in ISO Certified manufacturing plants. **AFA Part Number A3049024** Camshaft is an example of the high quality, better engineered parts that we offer today. This is a Flangeless Camshaft with a 3/4" Dia. Keyway made from forged steel. When correctly installed, it gives the optimum performance under all operating conditions. One of the most important parts of the valve train system is the camshaft. AFA's Camshafts are made of the highest quality materials, application engineered to your particular engine to insure that they will function flawlessly under the harshest operating conditions.



AFA Industries has a complete offering of engine parts for Cummins® engines to rebuild most everything on the engine. Also available are In-Frame and Complete Overhaul engine kits, Cylinder Components, Valve Train parts, Water and Oil pumps, Cooling System Components, Fuel System Components, and other engine parts to help you repair most components for the 855 Series engines.

AFA Q³ TECHNOLOGY
Quality Materials • Quality Engineering • Quality Manufacturing™

Consult your OE reference materials for exact applications.

Refer to the OEM service manual for proper engine assembly procedures.

Contact your local sales representative or AFA Certified Distributor for more information.