

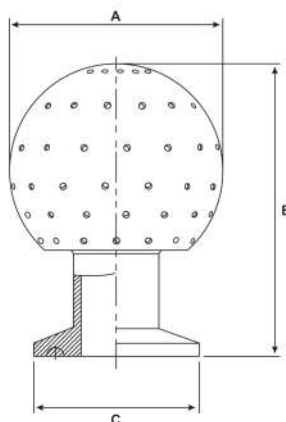
Tri Clover Spray Ball

Stainless Grade 316

Features

- Tri Clover Ferrule connection
- Maximum pressure rating 40PSI / 3Bar
- Maximum temperature rating 95°C
- 360° coverage

"Ask us about other options"



Dimensions

Unit: mm (unless stated otherwise)

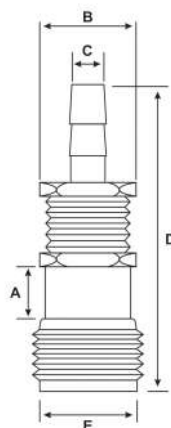
Size	12.7 1/2"	19.05 3/4"	25.4 1 1/2"	31.8 1 1/4"	38.1 1 1/2"	50.8 2"	63.5 2 1/2"
A	53	53	63	76	76	91	100
B	70	77	80	93	93	108	115
C	50.5	50.5	50.5	50.5	50.5	64	77.5
Code	SSBFER12	SSBFER20	SSBFER25	SSBFER30	SSBFER40	SSBFER50	SSBFER65

Female-Hosetail Turret Fitting

Stainless Steel / Chrome Brass

Features

- Ball lock socket with barbed hosetail
- Used for gas applications
- Stainless steel body with chrome brass exterior
- Maximum temperature rating 130°C
- Maximum pressure 215PSI / 15Bar



Dimensions

Unit: mm (unless stated otherwise)

Size	6	10	12
A	10	10	10
B	27	27	27
C	6.5	9.5	12
D	68.5	68.5	68.5
E	28	28	28
Code	STF6HTFG12	STF10HTFG12	STF12HTFG12

Stocked Items Non-Stocked Items