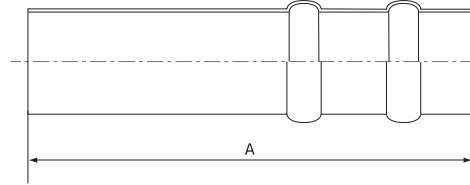


Double Swaged Hosetail

Stainless Grade 304

Features

- Used with flexible hose



“Used with Heavy Duty Hose Clamps. Refer to page 133”

Dimensions

Unit: mm (unless stated otherwise)

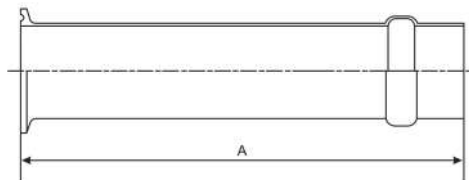
Size	25.4 1"	31.8 1 1/4"	38.1 1 1/2"	50.8 2"	63.5 2 1/2"	76.2 3"	101.6 4"	127 5"	152.4 6"
A	100	100	100	100	100	100	100	100	100
Thickness	1.5	1.5	1.5	1.5	1.5	1.5	1.5	1.5	1.5
Code	SDSH25	SDSH30	SDSH40	SDSH50	SDSH65	SDSH75	SDSH100	SSSH125	SDSH150

Tri Clover Swaged Hosetail

Stainless Grade 304

Features

- Used with flexible hose



“Used with Heavy Duty Hose Clamps. Refer to page 133”

Dimensions

Unit: mm (unless stated otherwise)

Size	25.4 1"	31.8 1 1/4"	38.1 1 1/2"	50.8 2"	63.5 2 1/2"	76.2 3"	101.6 4"	152.4 6"
A	129	129	129	129	129	129	129	129
Thickness	1.5	1.5	1.5	1.5	1.5	1.5	1.5	1.5
Code (Single)	SSSHFER25	SSSHFER30	SSSHFER40	SSSHFER50	SSSHFER65	SSSHFER75	SSSHFER100	SSSHFER150
Code (Double)	SDSHFER25	SDSHFER30	SDSHFER40	SDSHFER50	SDSHFER65	SDSHFER75	SDSHFER100	SDSHFER150

