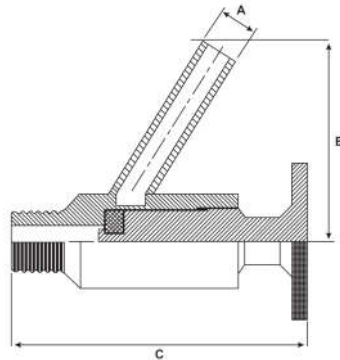


Threaded Sampling Valve

Stainless Steel 316

Features

- BSP threaded end
- Maximum temperature rating 120°C
- PTFE seal maximum temperature 200°C
- Maximum pressure 145PSI / 10Bar



Dimensions

Unit: mm (unless stated otherwise)

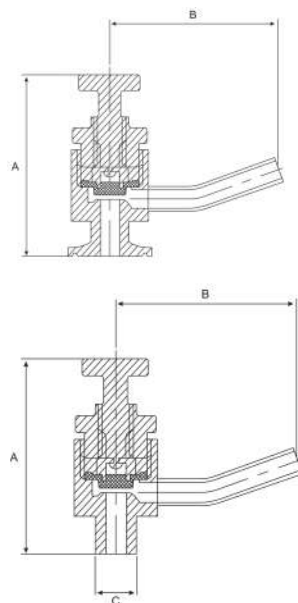
Size	12.7 1/2"
Code (Valve)	SSVT12
Code (Seal)	SSVTS12

Sampling Diaphragm Valve

Stainless Steel 316

Features

- Available as butt weld connection for Outside Diameter tube or as a Tri Clover ferrule connection
- Silicone seal maximum temperature rating 180°C



Dimensions

Unit: mm (unless stated otherwise)

Size	12.7 1/2"
A	59
B	55
C	12.7
Code (Butt Weld)	SSV612
Code (Tri Clover)	SSVFER612
Code (Seal)	SSVS12

