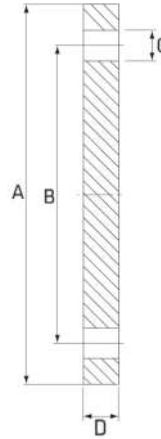


# PN10/16 Blind Flange

Stainless Grade 316

*"Flanges are stocked in Light Weight dimensions"*



## Dimensions

Unit: mm (unless stated otherwise)

Size	12.7 1/2"	19.05 3/4"	25.4 1"	31.8 1 1/4"	38.4 1 1/2"
A	95	105	115	140	150
B	65	75	85	100	110
C	14	14	14	18	18
D	14	16	16	16	16
D (Light Weight)	9	9	9	9	9
Holes	4	4	4	4	4
Code	SBF15PN10-16	SBF20PN10-16	SBF25PN10-16	SBF30PN10-16	SBF40PN10-16

Size	50.8 2"	63.5 2 1/2"	76.1 3"	101.6 4"	127 5"
A	165	185	200	220	250
B	125	145	160	180	210
C	18	18	18	18	18
D	18	18	20	20	22
D (Light Weight)	9	10	10	10	13
Holes	4	4	8	8	8
Code	SBF50PN10-16	SBF65PN10-16	SBF80PN10-16	SBF100PN10-16	SBF125PN10-16

Size	152.4 6"	203.2 ID 8"	254 ID 10"	304.8 ID 12"
A	285	340	405	460
B	240	295	355	410
C	22	22	26	26
D	22	24	28	28
D (Light Weight)	13	13	13	13
Holes	8	12	12	12
Code	SBF150PN10-16	SBF200PN10-16	SBF250PN10-16	SBF300PN10-16

Stocked Items    Non-Stocked Items