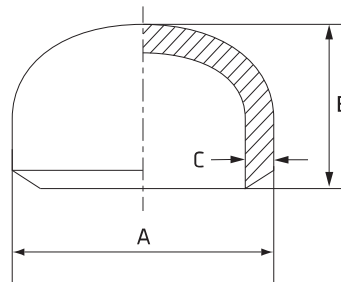


Weld End Cap

Stainless Grade 316

Features

- Butt welds to Nominal Bore pipe sizes



Dimensions (Schedule 10S)

Unit: mm (unless stated otherwise)

Size	15 1/2"	20 3/4"	25 1"	32 1 1/4"	40 1 1/2"
A	21.3	26.7	33.4	42.2	48.3
B	25.4	25.4	38.1	38.1	38.1
C	2.11	2.11	2.77	2.77	2.77
Code	SPEC615S10	SPEC620S10	SPEC625S10	SPEC632S10	SPEC640S10

Size	50 2"	65 2 1/2"	80 3"	90 3 1/2"	100 4"
A	60.3	73	88.9	101.6	114.3
B	38.1	38.1	50.8	63.5	63.5
C	2.77	3.05	3.05	3.05	3.05
Code	SPEC650S10	SPEC665S10	SPEC680S10	SPEC690S10	SPEC6100S10

Size	125 5"	150 6"	200 8"	250 10"	300 12"
A	141.3	168.3	219.1	273	323.8
B	76.2	88.9	101.6	127	152.4
C	3.4	3.4	3.76	4.19	4.57
Code	SPEC6125S10	SPEC6150S10	SPEC6200S10	SPEC6250S10	SPEC6300S10

Dimensions (Schedule 40S)

Unit: mm (unless stated otherwise)

Size	15 1/2"	20 3/4"	25 1"	32 1 1/4"	40 1 1/2"
A	21.3	26.7	33.4	42.2	48.3
B	25.4	25.4	38.1	38.1	38.1
C	2.77	2.87	3.38	3.56	3.68
Code	SPEC615S40	SPEC620S40	SPEC625S40	SPEC632S40	SPEC640S40

Size	50 2"	65 2 1/2"	80 3"	90 3 1/2"	100 4"
A	60.3	73	88.9	101.6	114.3
B	38.1	38.1	50.8	63.5	63.5
C	3.91	5.16	5.49	5.74	6.02
Code	SPEC650S40	SPEC665S40	SPEC680S40	SPEC690S40	SPEC6100S40

Size	125 5"	150 6"	200 8"	250 10"	300 12"
A	141.3	168.3	219.1	273	323.8
B	76.2	88.9	101.6	127	152.4
C	6.55	7.11	8.18	9.27	9.53
Code	SPEC6125S40	SPEC6150S40	SPEC6200S40	SPEC6250S40	SPEC6300S40

Stocked Items Non-Stocked Items