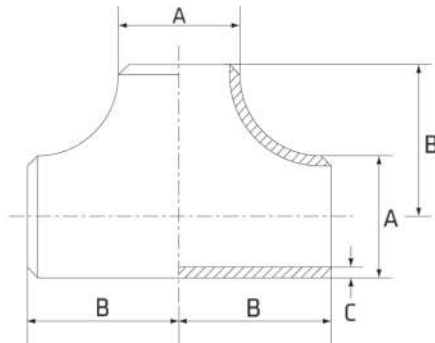


# Pipe Equal Tee

Stainless Grade 316

## Features

- Standard ASME B16.9



## Dimensions (Schedule 10S)

Unit: mm (unless stated otherwise)

Size	15 1/2"	20 3/4"	25 1"	32 1 1/4"	40 1 1/2"
A	21.3	26.7	33.4	42.2	48.3
B	25	29	38	48	57
C	2.11	2.11	2.77	2.77	2.77
Code	SPET615S10	SPET620S10	SPET625S10	SPET632S10	SPET640S10

Size	50 2"	65 2 1/2"	80 3"	90 3 1/2"	100 4"
A	60.3	73	88.9	101.6	114.3
B	64	76	86	95	105
C	2.77	3.05	3.05	3.05	3.05
Code	SPET650S10	SPET665S10	SPET680S10	SPET690S10	SPET6100S10

Size	125 5"	150 6"	200 8"	250 10"	300 12"
A	141.3	168.3	219.1	273	323.9
B	124	143	178	216	254
C	3.4	3.4	3.76	4.19	4.57
Code	SPET6125S10	SPET6150S10	SPET6200S10	SPET6250S10	SPET6300S10

## Dimensions (Schedule 40S)

Unit: mm (unless stated otherwise)

Size	15 1/2"	20 3/4"	25 1"	32 1 1/4"	40 1 1/2"
A	21.3	26.7	33.4	42.2	48.3
B	25	29	38	48	57
C	2.77	2.87	3.38	3.56	3.68
Code	SPET615S40	SPET620S40	SPET625S40	SPET632S40	SPET640S40

Size	50 2"	65 2 1/2"	80 3"	90 3 1/2"	100 4"
A	60.3	73	88.9	101.6	114.3
B	64	76	86	95	105
C	3.91	5.16	5.49	5.74	6.02
Code	SPET650S40	SPET665S40	SPET680S40	SPET690S40	SPET6100S40

Size	125 5"	150 6"	200 8"	250 10"	300 12"
A	141.3	168.3	219.1	273	323.8
B	124	143	178	216	254
C	6.55	7.11	8.18	9.27	9.53
Code	SPET6125S40	SPET6150S40	SPET6200S40	SPET6250S40	SPET6300S40

