

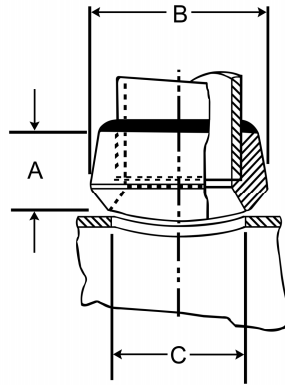
Socket

Stainless Grade 316

Features

- 3000lbs Pressure Rating

"Find out more about Socklets on page 48"



Dimensions

Unit: mm (unless stated otherwise)

Size	15 1/2"	20 3/4"	25 1"	30 1 1/4"	40 1 1/2"	50 2"	75 3"
A	25.4	27	33.3	33.3	34.9	38.1	44.5
B	35.7	43.7	50.8	65.1	72.2	88.1	122.2
C	23	29.4	36.5	44.5	50.8	65.1	93.7
Code	SPSOL615	SPSOL620	SPSOL25	SPSOL30	SPSOL40	SPSOL50	SPSOL75

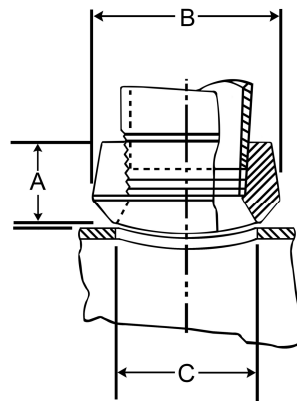
Threadolet

Stainless Grade 316

Features

- 3000lbs Pressure Rating
- BSP threaded end

"Find out more about Threadolets on page 48"



Dimensions

Unit: mm (unless stated otherwise)

Size	15 1/2"	20 3/4"	25 1"	30 1 1/4"	40 1 1/2"	50 2"	75 3"
A	25.4	27	33.3	33.3	34.9	38.1	50.8
B	35.7	43.7	50.8	65.1	72.2	88.1	122.2
C	23.8	29.4	36.5	44.5	50.8	65.1	93.7
Code	SPTOL615	SPTOL620	SPTOL25	SPTOL30	SPTOL40	SPTOL50	SPTOL75

