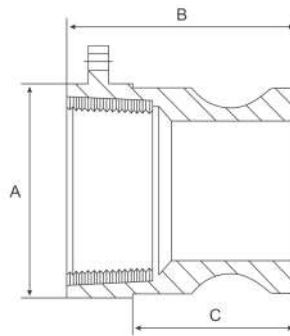


Camlock Type A

Stainless Grade 316

Features

- Male coupler to female BSP



Dimensions

Unit: mm (unless stated otherwise)

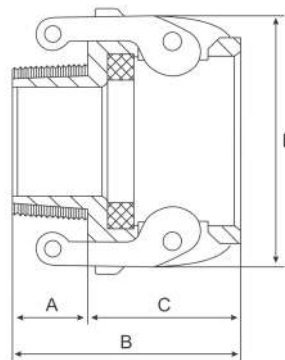
| Size | 12.7 1/2" | 19.05 3/4" | 25.4 1" | 31.8 1 1/4" | 38.1 1 1/2" | 50.8 2" | 63.5 2 1/2" | 76.2 3" | 101.6 4" | 127 5" | 152.4 6" |
|------|--------------|---------------|------------|----------------|----------------|------------|----------------|------------|-------------|-----------|-------------|
| A | 24.4 | 32.4 | 38.5 | 48.5 | 56 | 66 | 80 | 96 | 122.5 | 152 | 181 |
| B | 41 | 41 | 51.6 | 55 | 56 | 59 | 68 | 71.7 | 73.8 | 75.5 | 79.8 |
| C | 26 | 26 | 34.8 | 40 | 41 | 46 | 50 | 51 | 53.8 | 53 | 57.3 |
| Code | SCLA12 | SCLA20 | SCLA25 | SCLA30 | SCLA40 | SCLA50 | SCLA65 | SCLA75 | SCLA100 | SCLA125 | SCLA150 |

Camlock Type B

Stainless Grade 316

Features

- Female coupler to male BSP
- Stainless steel handles



Dimensions

Unit: mm (unless stated otherwise)

| Size | 12.7 1/2" | 19.05 3/4" | 25.4 1" | 31.8 1 1/4" | 38.1 1 1/2" | 50.8 2" | 63.5 2 1/2" | 76.2 3" | 101.6 4" | 127 5" | 152.4 6" |
|------|--------------|---------------|------------|----------------|----------------|------------|----------------|------------|-------------|-----------|-------------|
| A | 16 | 19 | 19 | 65.5 | 23.5 | 24.5 | 29 | 31.5 | 33 | 37 | 41 |
| B | 47.5 | 52.2 | 59 | 20 | 69.5 | 77 | 84.4 | 89.5 | 92 | 97 | 103.8 |
| C | 31.5 | 33.2 | 40 | 45.5 | 46 | 52.5 | 55.5 | 58 | 59 | 60 | 62.8 |
| D | 45 | 61.3 | 68.2 | 79.7 | 87.4 | 97 | 109.5 | 159.9 | 159.9 | 187.6 | 240 |
| Code | SCLB12 | SCLB20 | SCLB25 | SCLB30 | SCLB40 | SCLB50 | SCLB65 | SCLB75 | SCLB100 | SCLB125 | SCLB150 |

Stocked Items Non-Stocked Items