

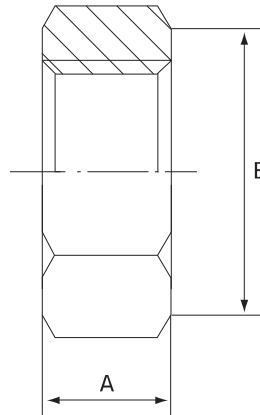
# Hex Back Nut

Stainless Grade 316

## Features

- 150lbs Pressure Rating

*"Use with Nippling Tube"*



## Dimensions

Unit: mm (unless stated otherwise)

Size	3.18 1/8"	6.35 1/4"	9.53 3/8"	12.7 1/2"	19.05 3/4"	25.4 1"	31.8 1 1/4"	38.1 1 1/2"	50.8 2"	63.5 2 1/2"	76.2 3"	101.6 4"
A	6.5	7.5	7.7	8.5	9	9	11	12	13	15	17	18
B	16	18	24	30	34.5	41.1	50.2	58	69.9	89	99.5	128
Code	SN03	SN06	SN09	SN12	SN20	SN25	SN30	SN40	SN50	SN65	SN75	SN100

# Blue Monster Thread Sealing Tape

PTFE

## Features

- Ideal for BSP and NPT threaded fittings
- Composition: 99.6% PTFE
- Colour: Blue
- Density: 0.8g / cm<sup>3</sup>
- Thickness: 0.0035" +/- 10%
- Temperature Range: -268°C to +260°C
- Pressure rating: 10,000 PSI
- 35 metre roll



Size	12.7 1/2"	19.05 3/4"	25.4 1"
Code	BMTT12	BMTT20	BMTT25

Stocked Items    Non-Stocked Items