

Firmware Update Procedure

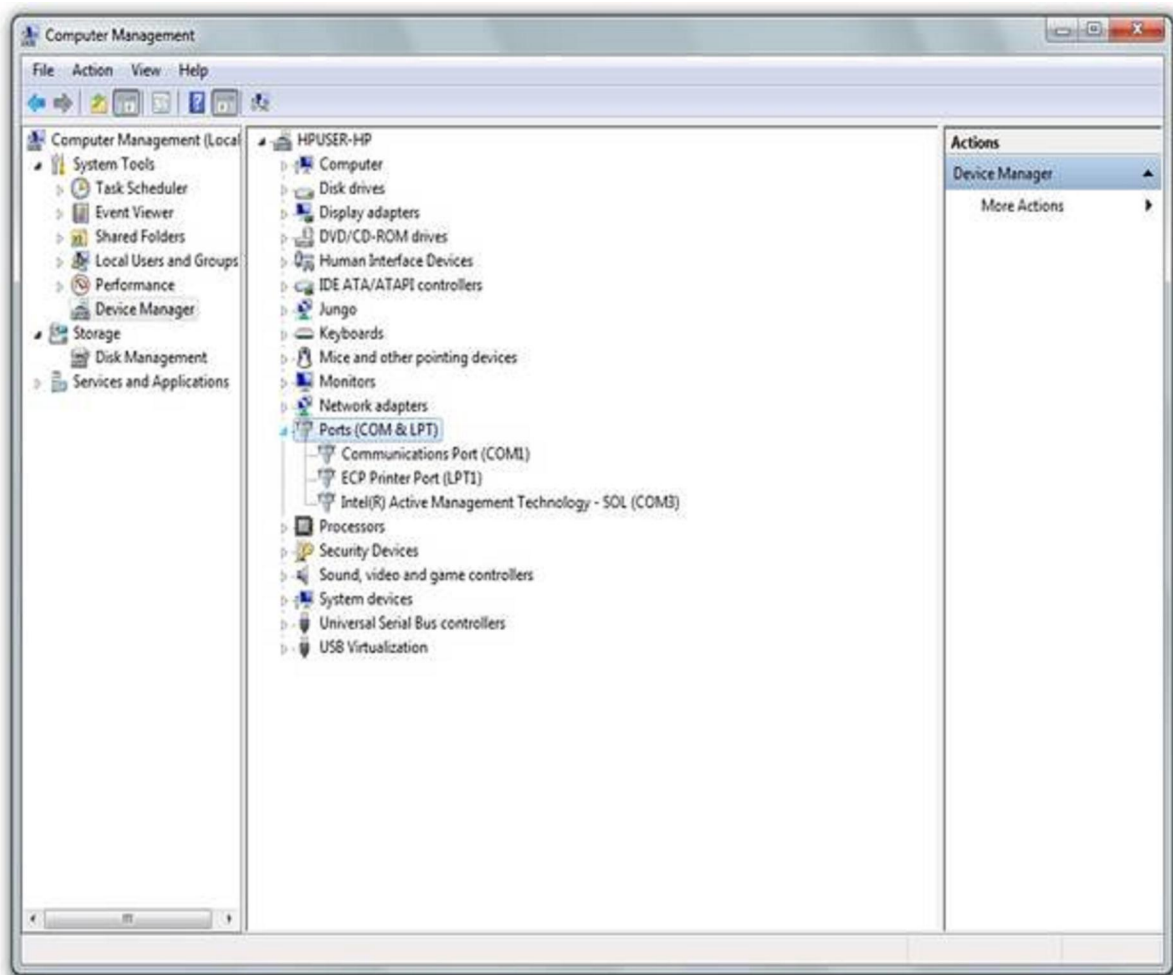
1. Install the Glas-Col Update Tool on computer.
2. Power to the control being updated should remain off. Use a USB cable with a Type A connector on one end and a Type B on other end to connect the Oakton control to the computer USB port.



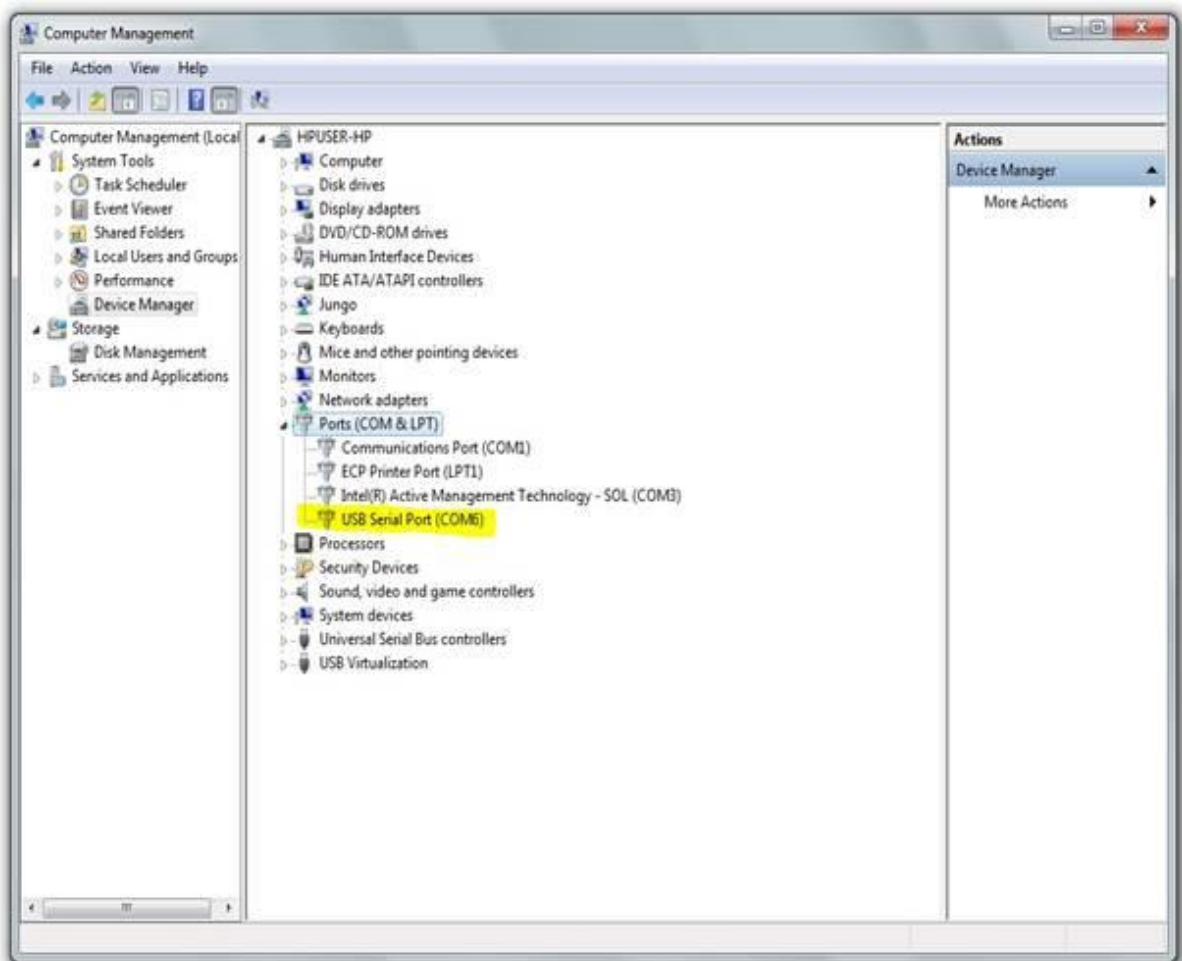
3. Next the user will need to determine what COM port is being assigned by the computer to the device being updated.
4. Left click on the windows start button.
5. Right click on Computer.



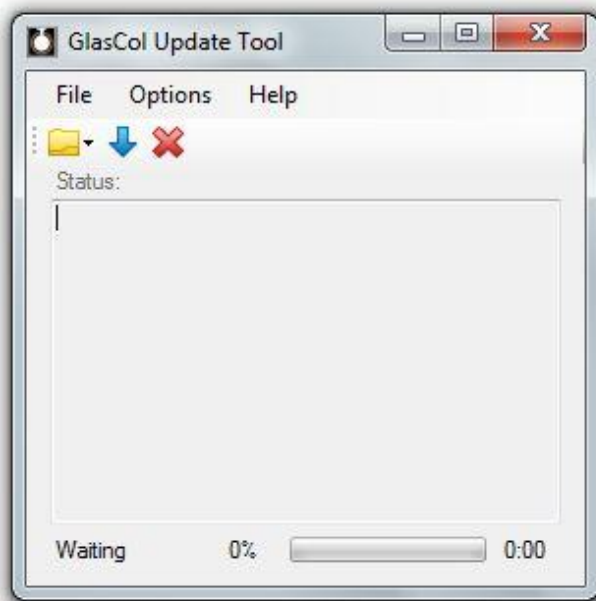
6. Select Manage by using the left mouse button.
7. The computer management window will appear.



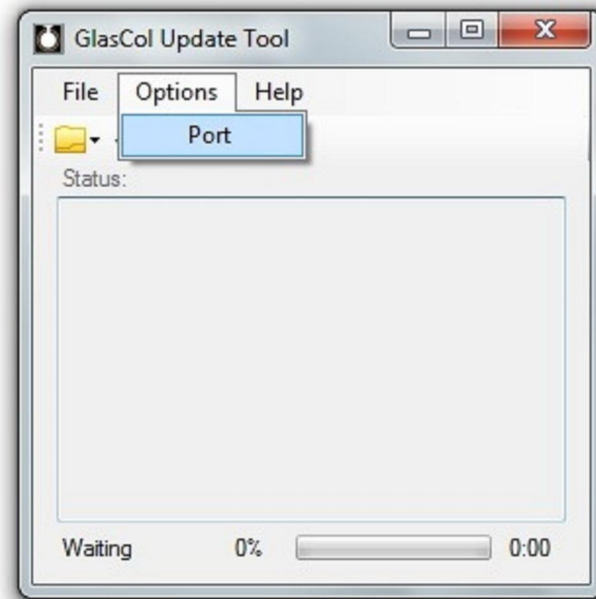
8. Left click on Device Manager.
9. Expand the ports list by left clicking on symbol that left of Ports.
10. Note what ports that appear on your computer.
11. Turn the power switch to the ON position on the Oakton/Digi-Sense control that is being updated.

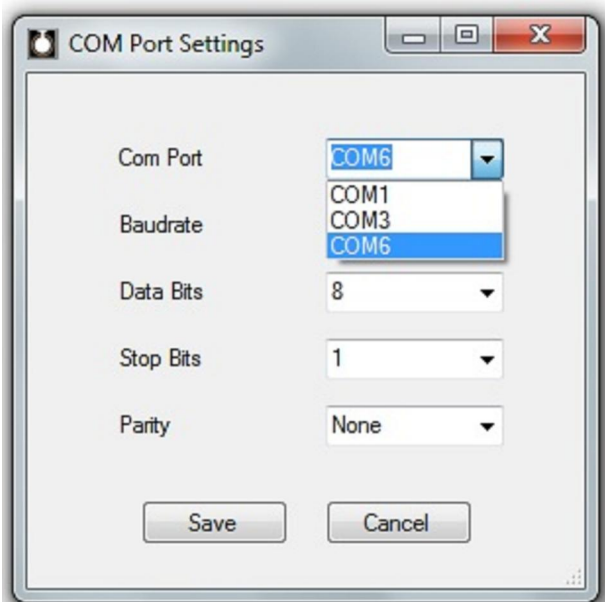


12. Highlighted: This is the port that Windows has assigned to the device. Your COM port number will most likely be different.
13. Note the COM port that has been assigned by Windows. This will be used in the Glas-Col Update Tool software.
14. Leave the power switch in the ON position on the Oakton/Digi-Sense control that is being updated. Close or minimize the computer management window.
15. Start the Glas-Col Update Tool software.

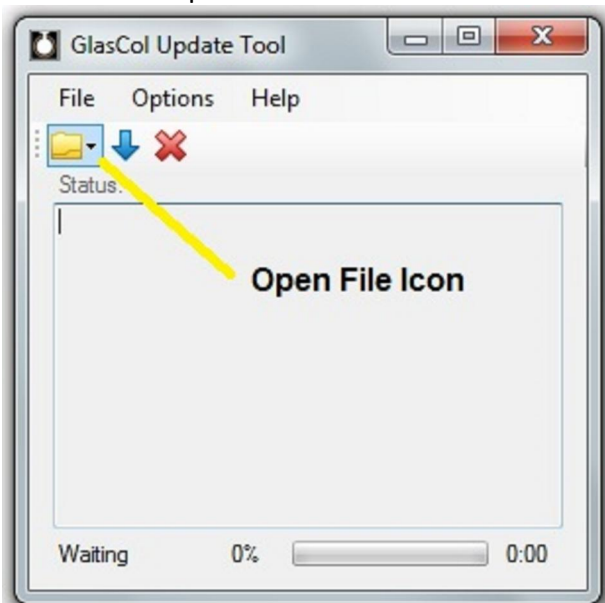


16. Left click Options and left click Port.

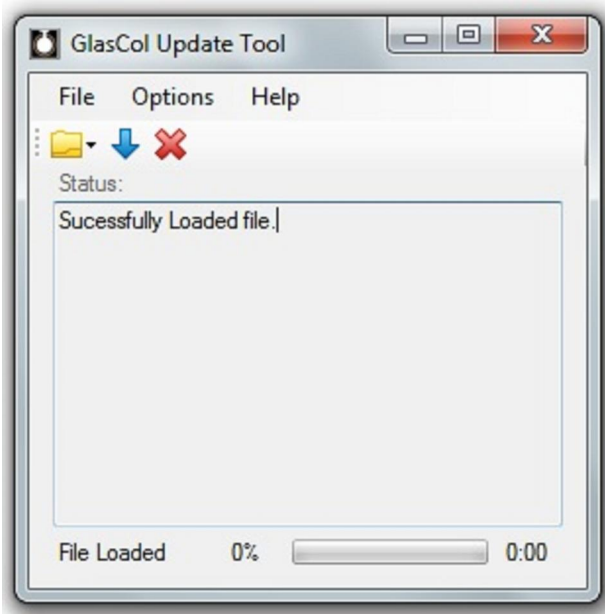




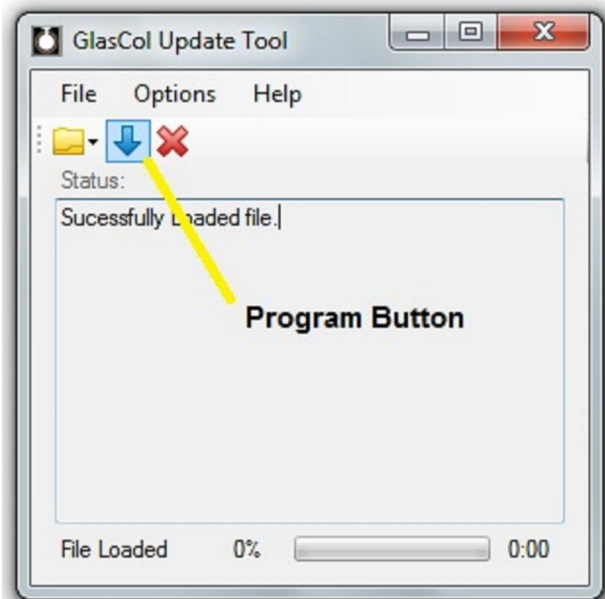
17. Left click the arrow and select the COM port that was assigned by Windows to the device being updated.
18. Leave Baudrate, Data Bits, Stop Bits, and Parity at the default values.
19. Left click the save button.
20. Left click the open file icon.



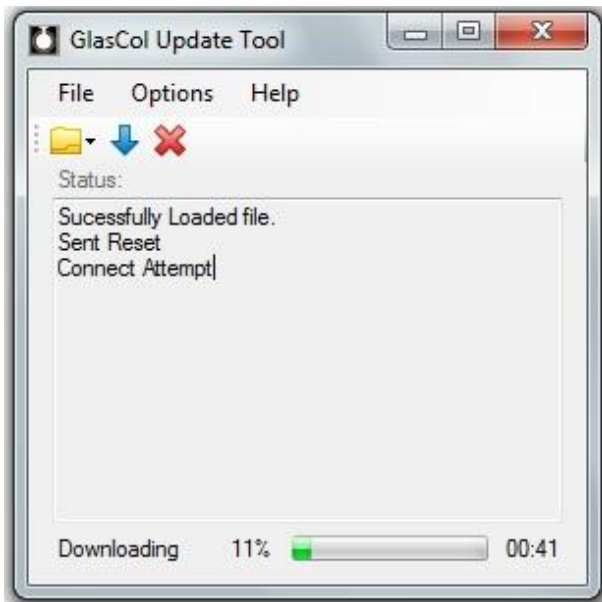
21. Select the new *.Hex file. The file will be located on your computer where you saved the file.
22. When the *.Hex file has been selected, your screen will say 'Successfully Loaded file'.



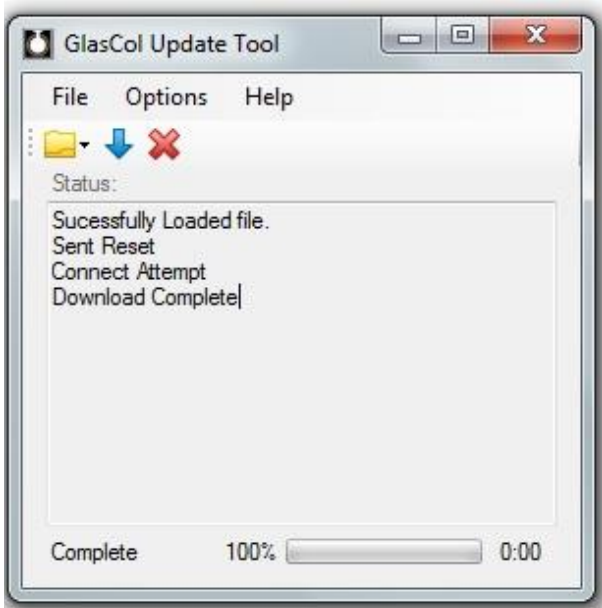
23. Turn power switch on the Oakton/Digi-Sense control to the OFF position.
24. Wait 5-10 seconds with the Oakton/Digi-Sense control powered OFF.
25. Press and hold the Run/Stop button and turn the power switch to the ON position.
26. Discontinue holding the Run/Stop button after power switch is in the ON position.
27. The display will appear as if the power switch is in the OFF position. The control is powered on and in the firmware update mode. It will remain in this mode for approx. 10 seconds and return to the normal operation screens if no further action is taken.
28. Left click the Program button icon.



29. The uploading procedure will begin. **DO NOT REMOVE POWER TO CONTROL DURING UPLOAD.** This could damage the control and make it nonfunctional.



30. The upload will take approx. 45-60 seconds to complete. The upload progress will be reflected in the bottom portion of the Update Tool software.
31. Firmware update complete.



32. Turn power switch to Oakton/Digi-Sense control off. Remove the USB cable from control and turn the power switch to the ON position.
33. Verify that the correct firmware file has been uploaded. The version number will appear in the lower right portion of the Oakton screen on initial power ON for approx. 3 seconds.