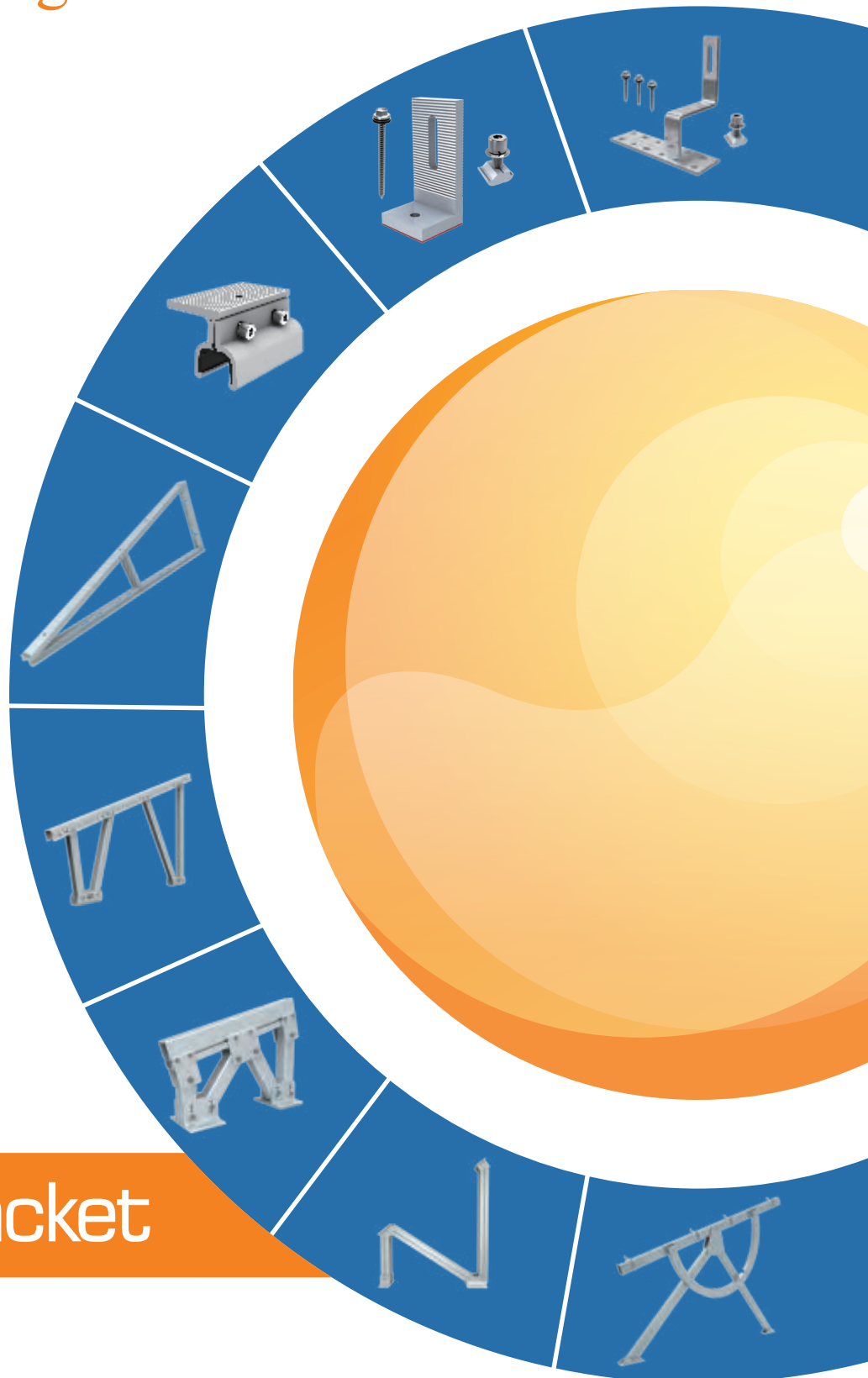


CHIKO

Solar Mounting Solutions



Mount Bracket

WORLD LEADING MANUFACTURE

COMPANY

CHIKO Solar designs and manufactures high quality solar mounting systems for pitched roof, flat roof and ground open areas. Whether for small or large-scale projects, standard models, or tailor-made systems, we deliver what you need. CHIKO Solar is a leading manufacturer in solar industry. We provide design, manufacture, sales, service, and customers support from our headquarters in Shanghai. We are working with companies from USA, Mexico, Germany, UK, Brazil, Korea, Thailand, Australia, South Africa, Japan, etc. to provide best possible service.

We are proud of the fact that more than 4GW of solar projects worldwide utilize CHIKO mounting systems.

Quality

At CHIKO, we meet highest quality standards. All of our Aluminum profiles are made 6005 T5 with surface protection anodic oxidation 12-15 micron (μ), hooks and bolts are made of Stainless Steel 304.

Ground mounting systems that made of Q235 steel and hot dip galvanized with an average thickness 80 micron (μ).



European Standard

BSEN 1990: 2002+A1:2005

Eurocode-Basis of structural design.

BSEN 1991-1-3: 2003.

Eurocode 1-Actionson structure-Part 1-2:

General actions-Snow loads.

BSEN 1991-1-4:2005.

Eurocode 1: Actions on structures-Part 1-2:

General actions-Wind actions.

USA Standard

UL2703

UL1703

Production Certification

CHIKO Solar has obtained product certifications, and management system endorsement guaranteed and approved by leading testing agencies including UL, SGS, Gamcorp, MCS,Intertek, SPAD, etc. Our product designs are based on the following Australian Standards and sections of Building Code of Australia relevant to structural issues.

SGS

Intertek



Australia Standard

AS 1170.0-2002 Structural design Actions
Part 0: General Principle.

AS 1170.2-2002 Structural design Actions
Part 2: Wind actions.

AS 3566.1-2002 Self-drilling screws for the
building and construction.

AS 3566.2-2002 Part 2: Corrosion resistance
requirements.

AS 4600-2005 Cold formed Steel structures.

ISO 3506: 1-2009 Mechanical Properties of
Corrosion-Resistance Stainless Steel Fastener.

INNOVATIVE DESIGN MADE SIMPLE

INDEX

TILE ROOF MOUNT BRACKET

1-5

S Tile Mount
Adjustable S Tile Mount
Flat Tile Mount
Asphalt Shingle Mount
Roman Tile Mount

METAL ROOF MOUNT BRACKET

6-14

L Feet Mount
Hanger Bolt Mount
SS Metal Sheet Mount
Alu Standing Seam Mount
Klip-lok 406 & 700 Mounts
SS Standing Seam Mount
Rail-free Mount
Adjustable Tilt Mount
Standoff

ROOF COMPONENT

15-16

Rail & Rail Splice Kit
Mid Clamp & End Clamp

FLAT ROOF MOUNT

17-20

Ballast I-2 Flat Roof Mount
Ballast I-3 Flat Roof Mount
Ballast III Flat Roof Mount
Aluminium Triangular Mount

GROUND MOUNT

21-29

A1V & A2V Aluminium Ground Mount
U2V Steel Ground Mount
TW Aluminum Ground Mount
Pipe Ground Mount
Σ Single Pipe Ground Mount
Adjustable Steel Ground Mount
Alu Carport
Steel Y Carport
Steel T Carport

GROUND SCREW & ANCHOR

30-31

ACCESSORY

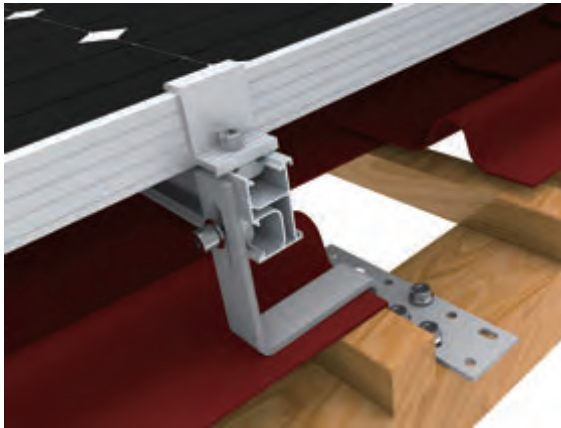
32-35

Earthing Accessory
Cable Fixed Accessory
PV Connector
PV Cable

PROJECTS REFERENCE

36

S Tile Mount



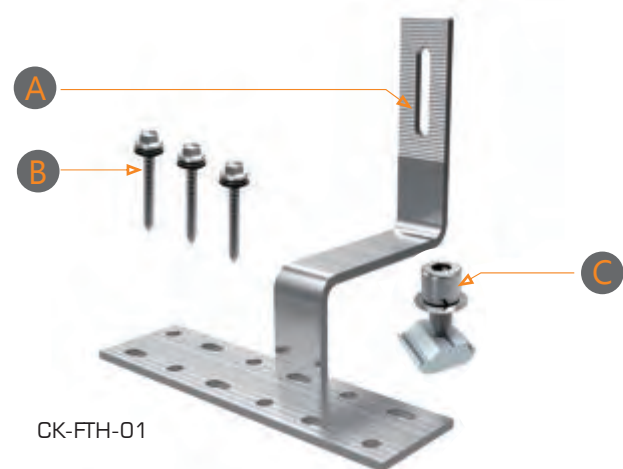
CHIKO S Tile Hook, gives you different options for installation on rail (vertical or horizontal).

Features

- Enable fast, simple and cost-effective installation
- Made of SUS 304
- Highly corrosion resistant surface treatment
- Fasteners and rail nut configured fully, to save installation time and purchasing extra parts

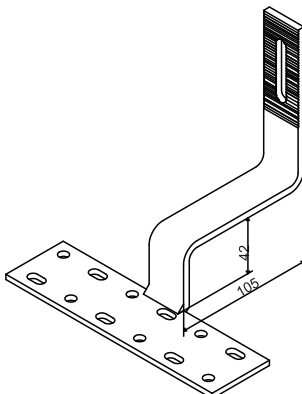
Component List

Component List	Qty
(A) Stainless steel 304 hook	1
(B) 6.3x65mm wooden screw & EPDM washer	3
(C) M8x25mm SUS 304 bolt & washer with rail nut	1



CK-FTH-01

Specification



S Tile Mount Series



CK-FTH-01B



CK-FTH-02



CK-FTH-03



CK-FTH-04

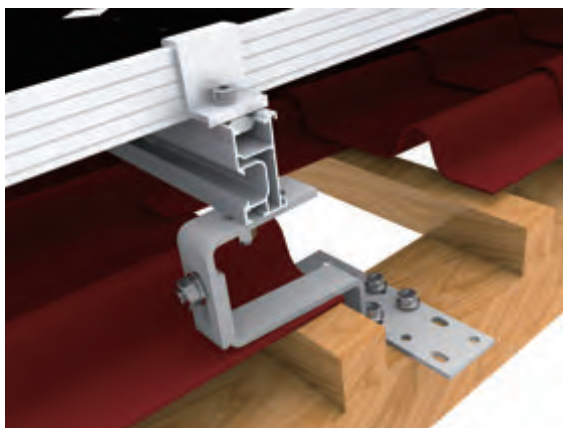


CK-FTH-031



CK-FTH-071

Adjustable S Tile Mount



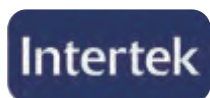
CHIKO Adjustable S Tile Hook can be adjusted horizontally and vertically, which gives more versatility than regular S Tile Hook.

Features

- Enable fast, simple and cost-effective installation
- Made of SUS 304
- Highly corrosion resistant surface treatment
- Fasteners and rail nut configured fully, to save installation time and purchasing extra parts

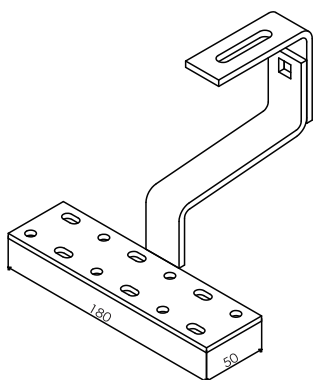
Component List

Component List	Qty
(A) Stainless steel 304 hook	1
(B) 6.3x65mm wooden screw & EPDM washer	3
(C) M8x25mm SUS 304 bolt & washer with rail nut	1
(D) Carriage bolt M10 x 25 & hex nut	1



CK-FTH-073

Specification



Adjustable S Tile Mount Series



CK-FTH-09



CK-FTH-09B



CK-FTH-09V



CK-FTH-044



CK-FTH-063V



CK-FTH-064V

Flat Tile Mount



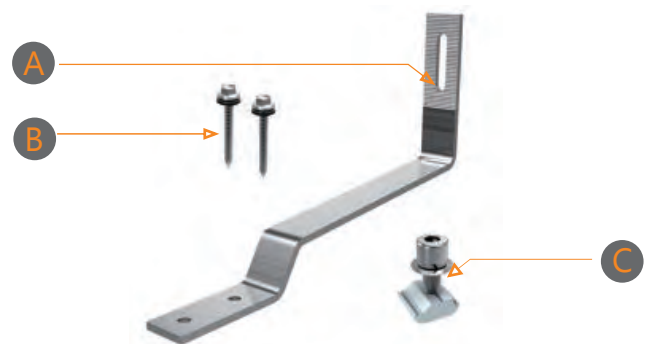
CHIKO Flat Tile Hook offers the best and easiest solution for installation on a slate, cement or flat tile roof.

Features

- Enable fast, simple and cost-effective installation
- Made of SUS 304
- Highly corrosion resistant surface treatment
- Fasteners and rail nut configured fully, to save installation time and purchasing extra parts

Component List

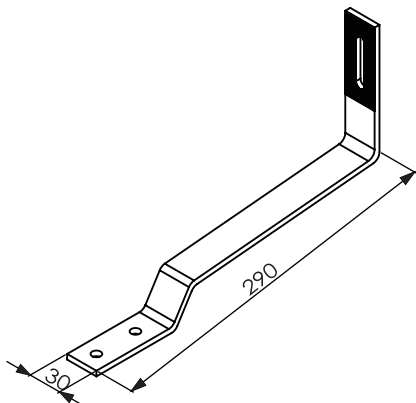
Component List	Qty
(A) Stainless steel 304 hook	1
(B) 6.3x65mm wooden screw & EPDM washer	2
(C) M8x25mm SUS 304 bolt & washer with rail nut	1



CK-FTH-05



Specification



Flat Tile Mount Series



CK-FTH-05B



CK-FTH-06

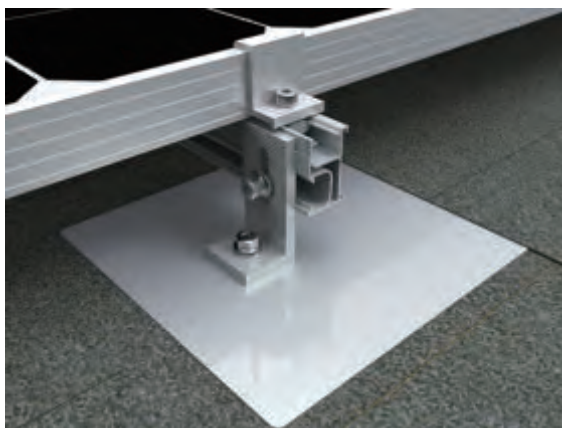


CK-FTH-062



CK-FTH-062-52

Asphalt Shingles Mount



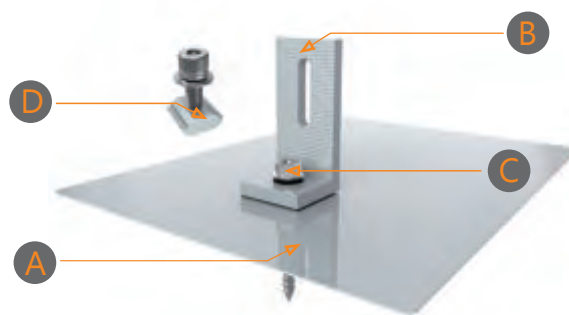
This flashing matches CHIKO L feet, supplying the best solution for Asphalt Shingles.

Features

- Flashing and L foot made of 100% aluminum
- Waterproof EPDM rubber integrated
- Enable fast, simple and cost-effective installation
- Fasteners and rail nut configured fully, to save installation time and purchasing extra parts

Component List

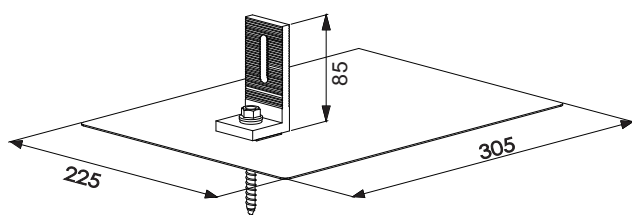
Component List	Qty
Ⓐ 100% aluminum flashing	1
Ⓑ Aluminum L foot 6005-T5	1
Ⓒ 8x80mm wooden screw & EPDM washer	1
Ⓓ M8x25mm SUS 304 bolt & washer with rail nut	1



CK-FTH-019



Specification



Asphalt Shingles Mount Series



CK-FTH-07



CK-FTH-07B



CK-FTH-010



CK-FTH-061

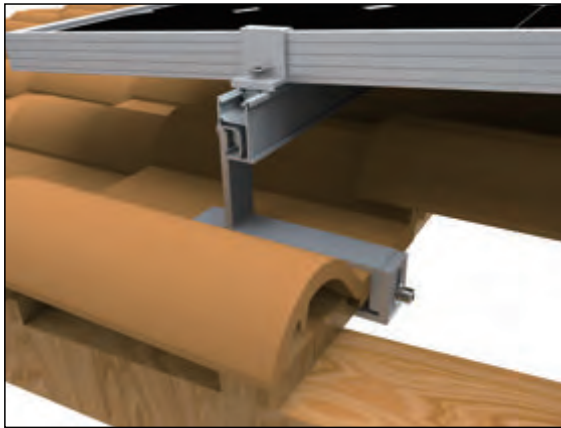


CK-FTH-061-255



CK-FTH-061V

Roman Tile Mount



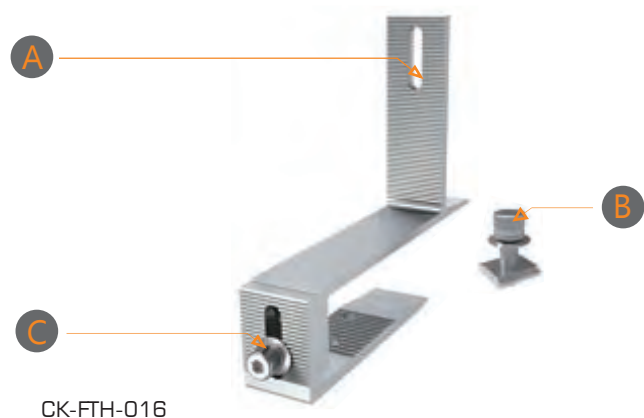
This hook is adjustable and is perfect for roman tiles, concrete tiles and shingle rooftops

Features

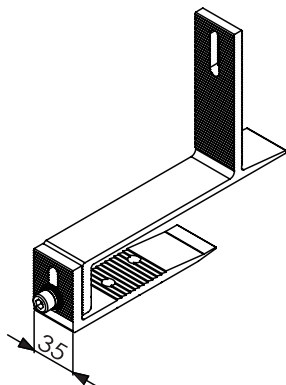
- Enable fast, simple and cost-effective installation
- High class anodized aluminium
- Fasteners and rail nut configured fully, to save installation time and purchasing extra parts
- Height adjustment

Component List

Component List	Qty
(A) Aluminium hook 6005-T5	1
(B) M8x25mm SUS 304 bolt & washer with rail nut	1
(C) M8X20 SUS 304 bolt & washer	1



Specification



Roman Tile Mount Series



CK-FTH-016A



CK-FTH-016B

METAL ROOF MOUNT BRACKET

L Feet Mount



CK-FTH-013

CHIKO L feet have been widely used on universal corrugated metal roofing. It can fix to the roof rafter directly, applied with hanger bolts or fitted with CHIKO designing roof clamps.

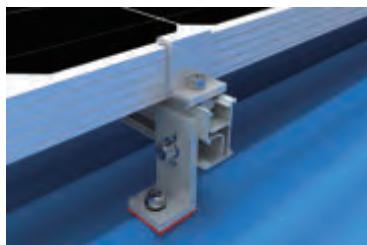
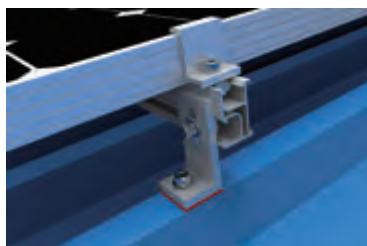
Features

- Enable fast, simple and cost-effective installation
- Al6005-T5. High class anodized aluminium
- Waterproof Silicone rubber intergrated
- Fasteners and rail nut configured fully, to save installation time and purchasing extra parts

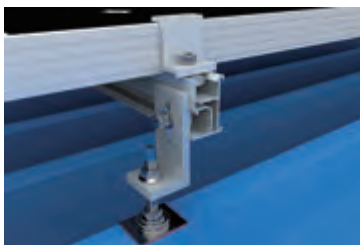
Universal trapezoid for & corrugated sheet metal:



Fix to roof directly



Apply with Hanger bolt



Apply with roof clamps



Hanger Bolt Mount

For Wooden Rafter



CK-FTH-M10-B200/250/300

CHIKO hanger bolts can be installed on both wooden rafters or steel purlins. Both types can be applied with L feet or plate.

Features

- Enable fast, simple and cost-effective installation
- Made of SUS 304
- Highly corrosion resistant surface treatment
- Waterproof EPDM rubber integrated
- Wooden rafter and steel purlin options

For Steel Purlin



CK-FTH-M10-C120/160/200



Apply with L Feet



CK-FTH-013M10-B



CK-FTH-013M10-C



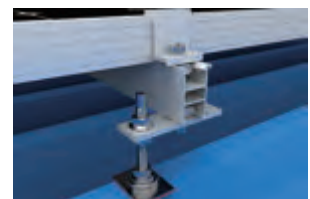
Apply with plate



CK-FTH-08M10-B



CK-FTH-08M10-C



Standing Seam Roof Clamp



Chiko Roof Clamps #212 & #213 are designed for standing seam roofing with the similar profiles, providing a simple clip-on installation to the roof.

Features

- Enable fast, simple and cost-effective installation
- A16005-T5, High standard anodized aluminum
- Minimal fasteners to save installation time
- Universal used on similar roofing

For standing seam roof:



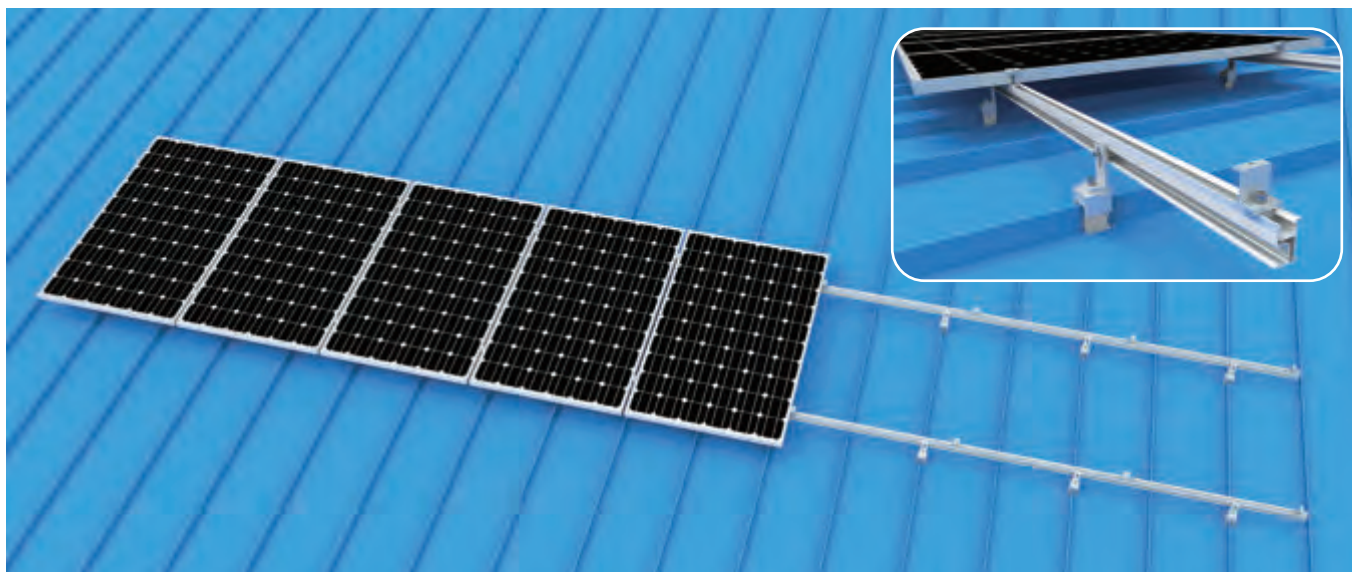
CK-FTH-212



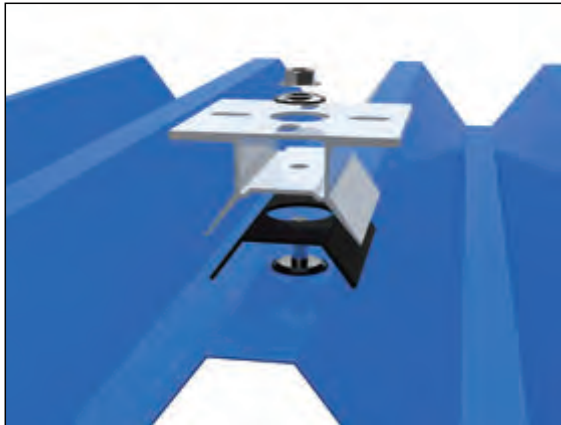
CK-FTH-213



Application



88 Style Trapezoidal Mount



This hook is designed for trapezoid metal roofs allowing it to be fixed directly to the purlin, providing a strong and robust solution.

Features

- Enable fast, simple and cost-effective installation
- Al6005-T5. High class anodized aluminium
- Waterproof EPDM rubber intergrated
- Fasteners and rail nut configured fully, to save installation time and purchasing extra parts

For trapezoid metal sheet:

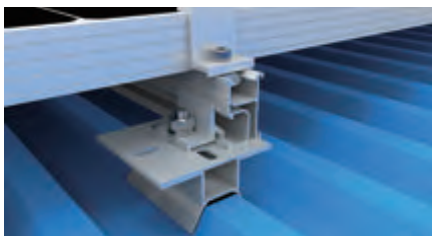


CK-FTH-025

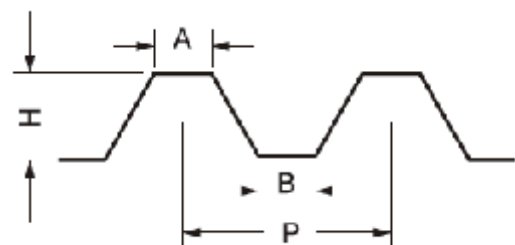
CK-FTH-027



Fix rail on trapezoidal metal sheet directly:



Apply with tilt mounting kits:



Item	H	P	A	B
CK-FTH-025	30	300	25	250
CK-FTH-027	88	200	35	350

Lysaght Klip-lok 406 & 700 Mounts

CHIKO 406 & 700 Clamp is designed for Lysaght Klip-lok 406 and 700 roofings. The smart design allows for easy and fast installation.



CK-FTH-TC700



CK-FTH-TC406



CK-FTH-TC700-2N



CK-FTH-TC406-2N



CK-FTH-TC700-3N



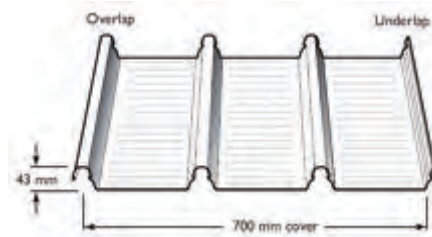
CK-FTH-TC406-3N



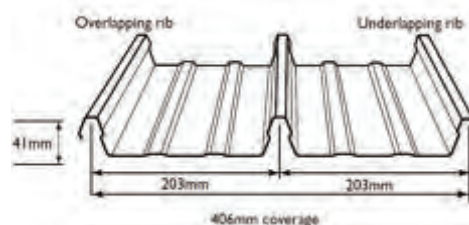
Features

- Enable fast, simple and cost-effective installation
- Al6005-T5. High class anodized aluminium
- Waterproof EPDM rubber integrated

Flush mount



Apply with tilt leg



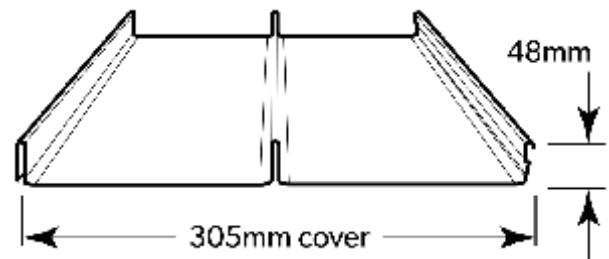
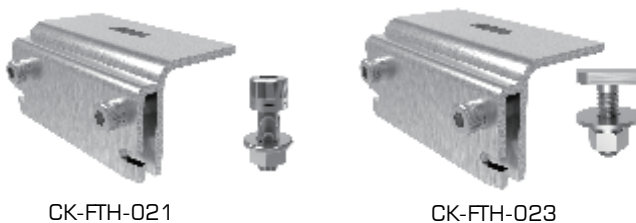
Standing Seam Mount

CHIKO Stainless steel clamps are designed for standing seam metal roofing that provides you a non-penetration solution.

Features

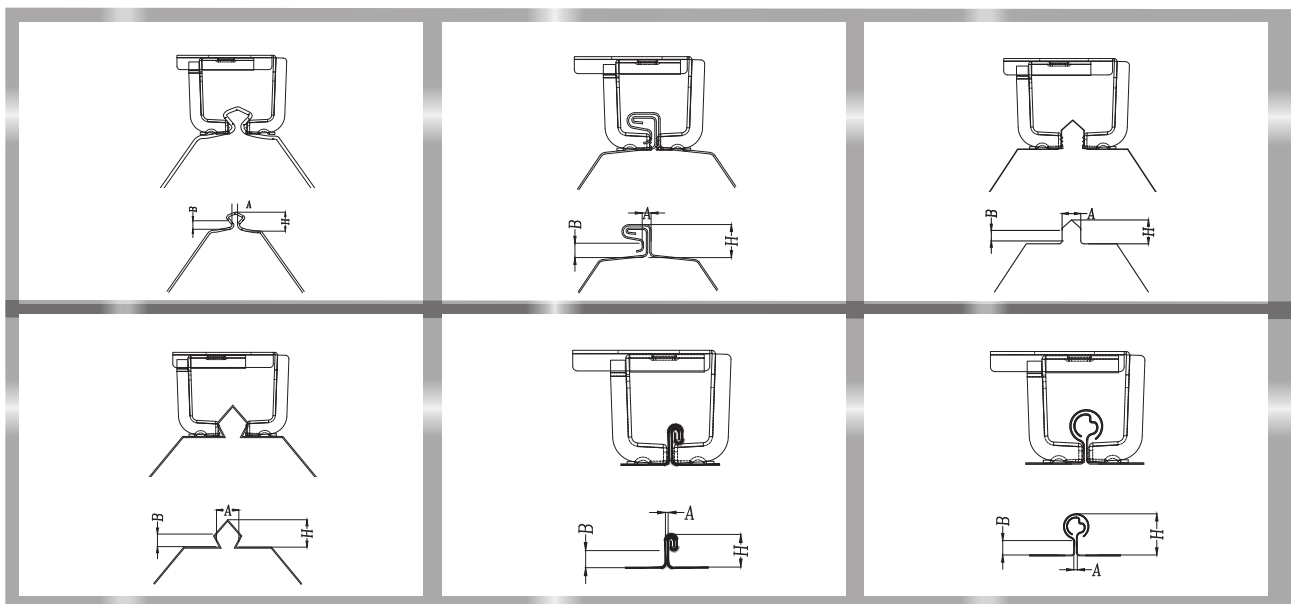
- Enable fast, simple and cost-effective installation
- Made of SUS 304
- Highly corrosion resistant surface treatment
- Fasteners and rail nut configured fully to save installation time and purchasing extra parts

Longline 305 clamp:



Universal standing seam roof clamp:

CK-FTH-024



Rail-free Mount

CHIKO rail free mount is designed for trapezoid and corrugated sheet metal roofing enabling you to install without railing.



CK-FTH-026

Features

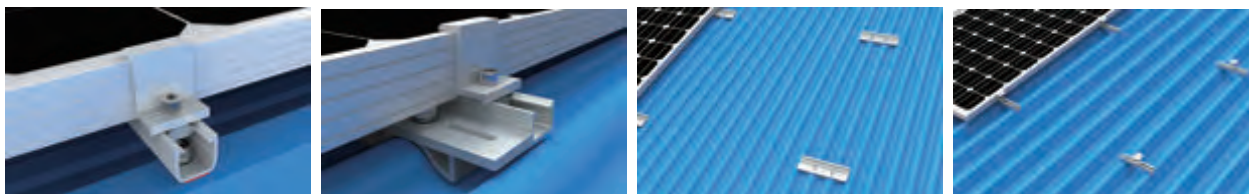
- Enable fast, simple and cost-effective installation
- Al6005-T5. High class anodized aluminium
- Waterproof EPDM rubber pad, no need extra rail
- Rail free, cost-effective solution



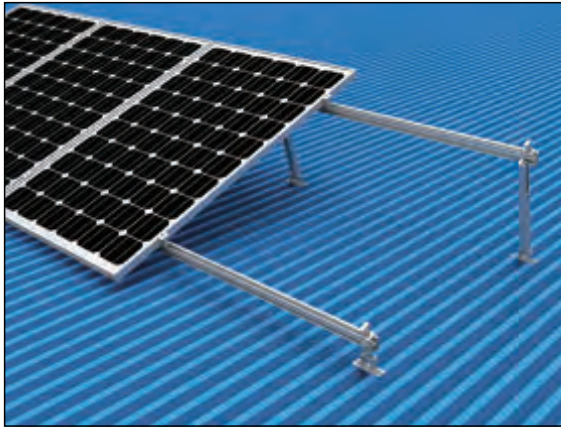
CK-FTH-017



Installation



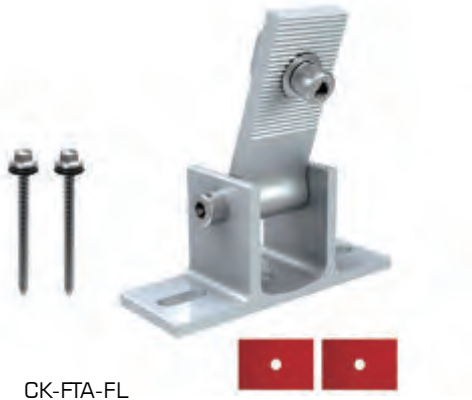
Adjustable Tilt Mount



Adjustable Tilt Mount is designed to allow the system to be tilted from 10-15, 15-30 or 30-45 degrees.

Features

- Enable fast, simple and cost-effective installation
- Al6005-T5. High class anodized aluminium
- Waterproof EPDM rubber integrated
- Fasteners and rail nut configured fully to save installation time and purchasing extra parts

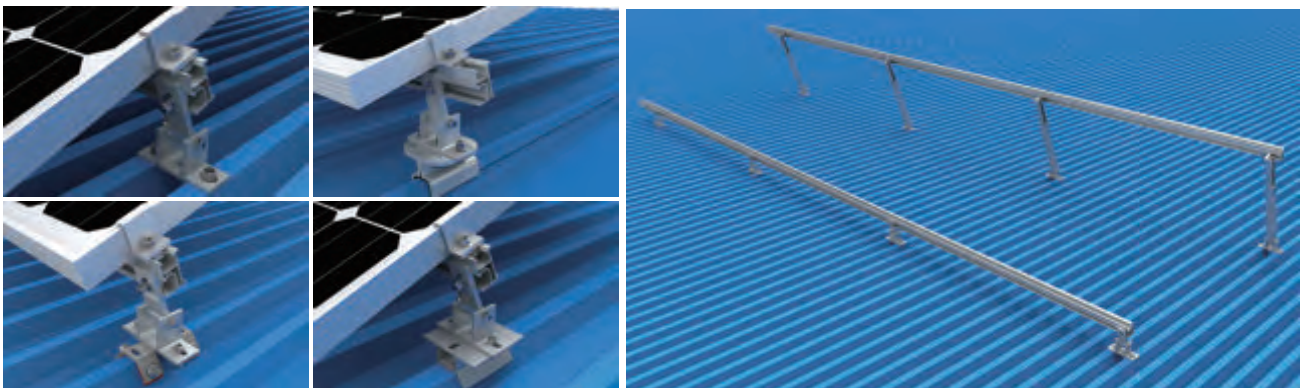


CK-FTA-FL

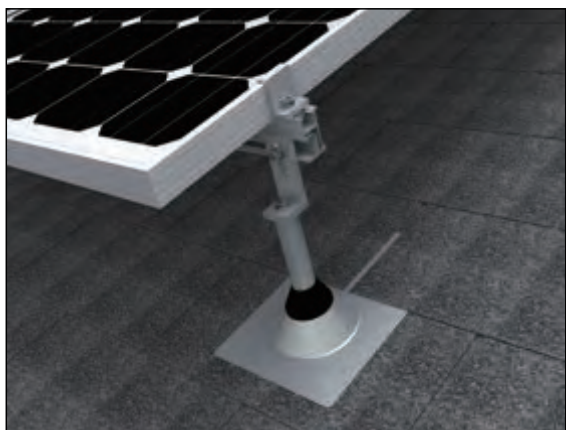


CK-FTA-BL200/340/500

Application



Standoff



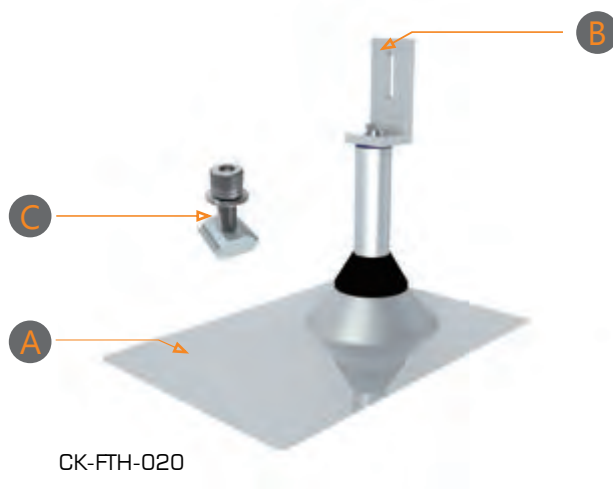
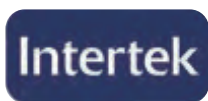
The aluminum standoff can be used on any type of flat roof.

Features

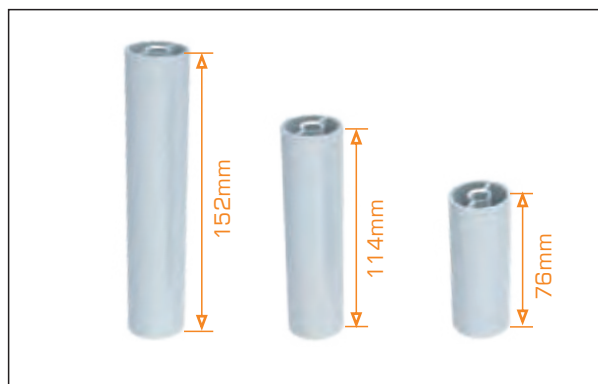
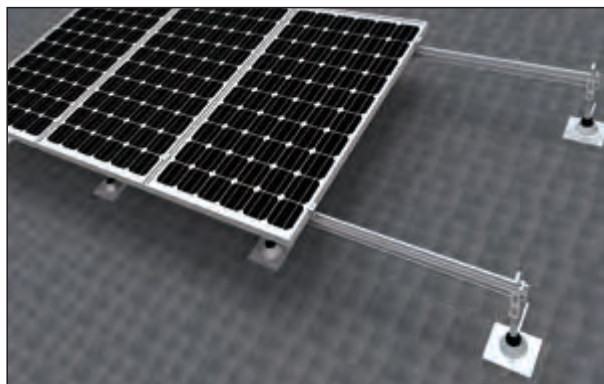
- Enable fast, simple and cost-effective installation
- Waterproof EPDM bubble integrated
- Fasteners and rail nut configured fully to save installation time and purchasing extra parts

Component List

Component List	Qty
Ⓐ 100% aluminum flushing	1
Ⓑ 6005-T5 aluminum L foot	1
Ⓒ M8x25mm SUS 304 bolt & washer with rail nut	1



Installation



Rail & Splice for roof

CHIKO rail is of high quality, robust and is inexpensive.

Features

- Al6005-T5. High class anodized aluminium
- Enable fast, simple and cost-effective installation
- Universal

Nature Color



6R		6R rail splice kit	
7R		7R & 8R rail splice kit	
8R			

Black Color

6R-B		6R-B rail splice kit	
7R-B		7R-B & 8R-B rail splice kit	
8R-B			

Mid Clamp & End Clamp



Mid clamp:
30/33/35/38/40/45/50mm



End clamp:
30/33/35/38/40/45/50mm



Black mid clamp:
30/33/35/38/40/45/50mm



Black end clamp:
30/33/35/38/40/45/50mm



Adjustable mid clamp:
30/34/38/42mm



Adjustable end clamp:
30/34/38/42mm



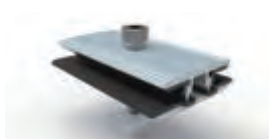
Adjustable mid clamp:
35/40/45/50mm



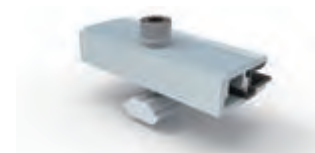
Adjustable end clamp:
35/40/45/50mm



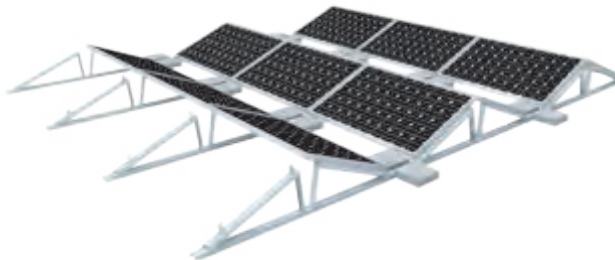
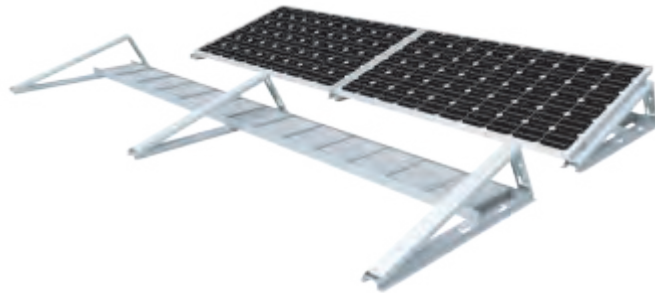
Thin film mid clamp:
5mm-7.5mm



Thin film end clamp:
5mm-7.5mm



Ballast I-2 Flat Roof Mount



Chiko Solar Ballast I Systems is an universal mounting system to serve virtually any commercial flat roofs. The system is designed to provide the durability and flexibility solutions that is quick to install and is light on the roof.

Features

- Material: Aluminum 6005-T5, Stainless steel 304
- Tilt Inclination: 15°, 20°, 30°
- Module Orientation: Landscape
- Max Wind Load: 60m/s
- Pre-assembled and Folded ballast console



Main Components:

Ballast Console BTI-2



Mid Clamp



End Clamp



End Plate



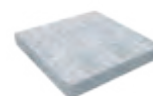
Ballast Profile - Concret Carrier



Ballast Profile



Concrete Block

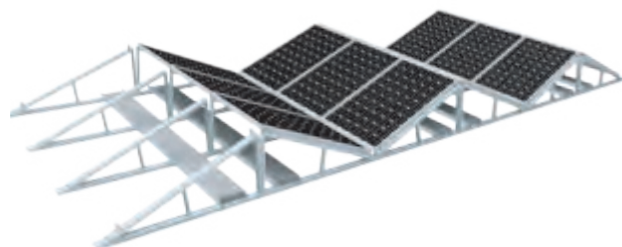
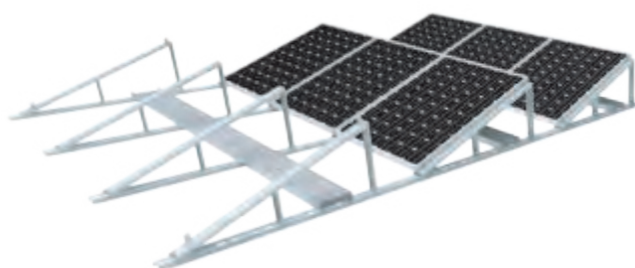
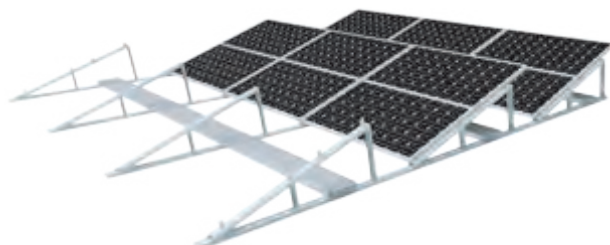


Rear Plate



Ballast I-3 Flat Roof Mount

Chiko Ballast I-3 has the extensive flexibility to provide 1 module portrait and 2 modules landscape installation at the same console. It's easier to configure, easy to store and reduce system costs.







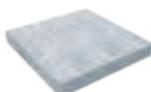



Features

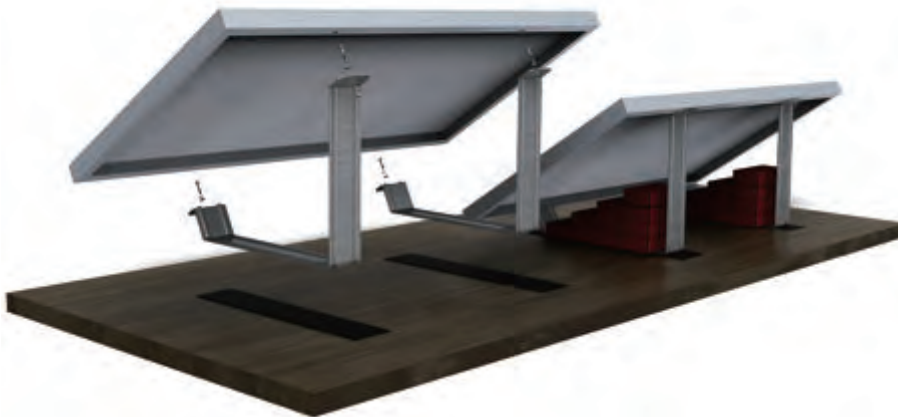
- Material: Aluminum 6005-T5, Stainless steel 304
- Tilt Inclination: 15°, 20°, 30°
- Module Orientation: Landscape & Portrait
- Max Wind Load: 60m/s
- Pre-assembled and Folded ballast console



Main Components:

Ballast Console BTI-3	Mid Clamp	End Clamp	End Plate
			
Ballast Profile - Concrete Carrier	Ballast Profile	Concret Block	Rear Plate
			

Ballast III Flat Roof Mount



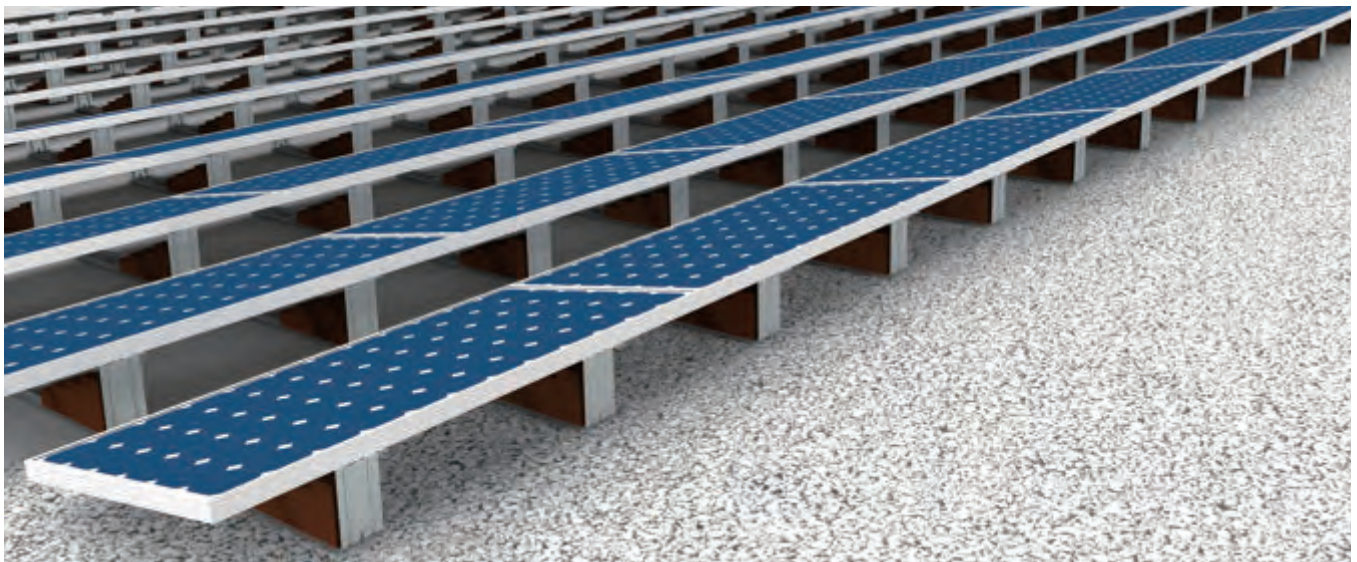
Product Advantages

- Easy installation
- Cost-saving
- Light weight

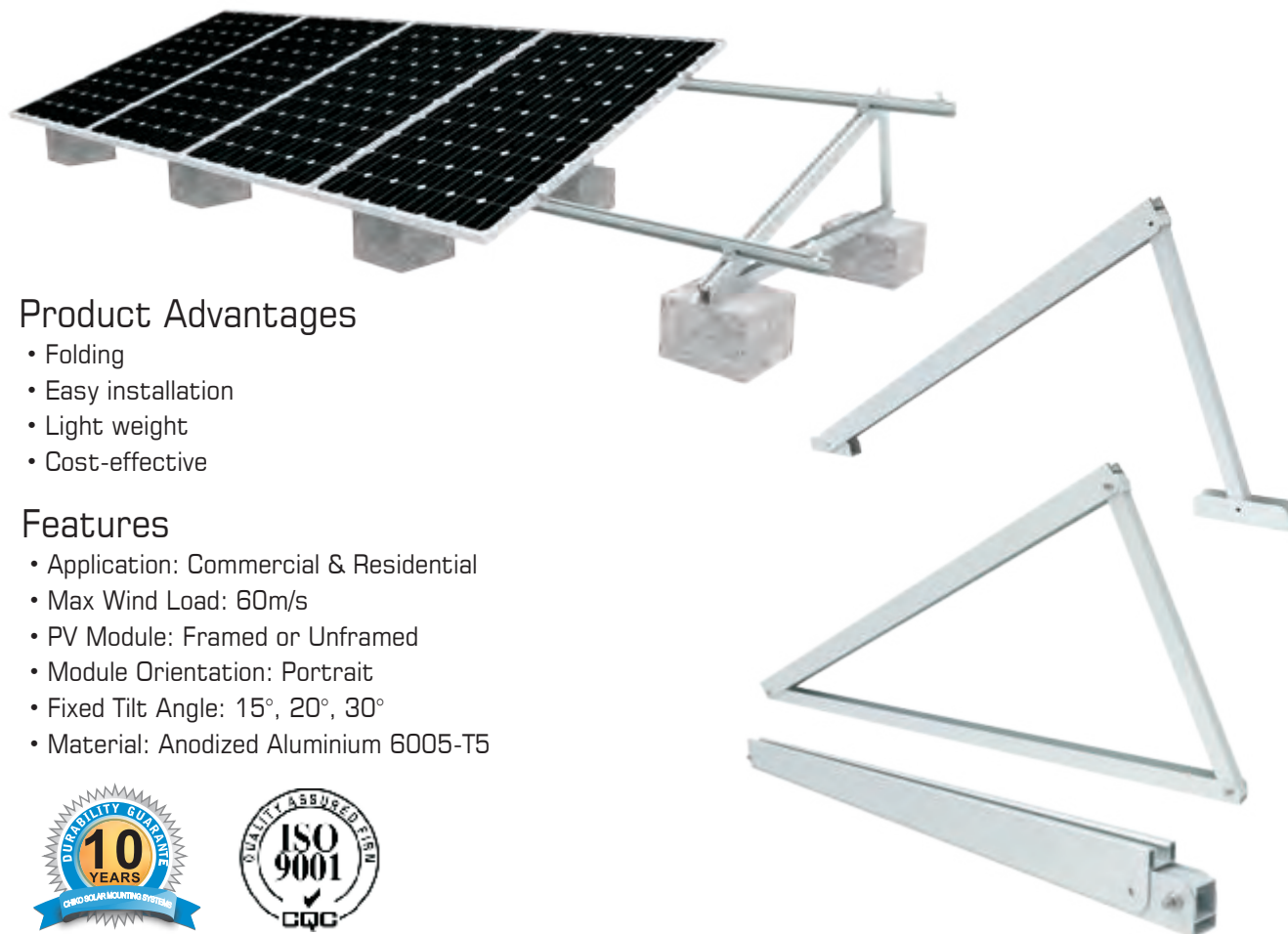


Features

- Application: Commercial & Residential
- Max Wind Load: 60m/s
- PV Module With: 808mm to 1000mm Framed
- Module Orientation: Landscape
- Fixed Tilt Angle: 15°, 20°, 30°
- Material: Aluminium



Aluminium Triangular Mount

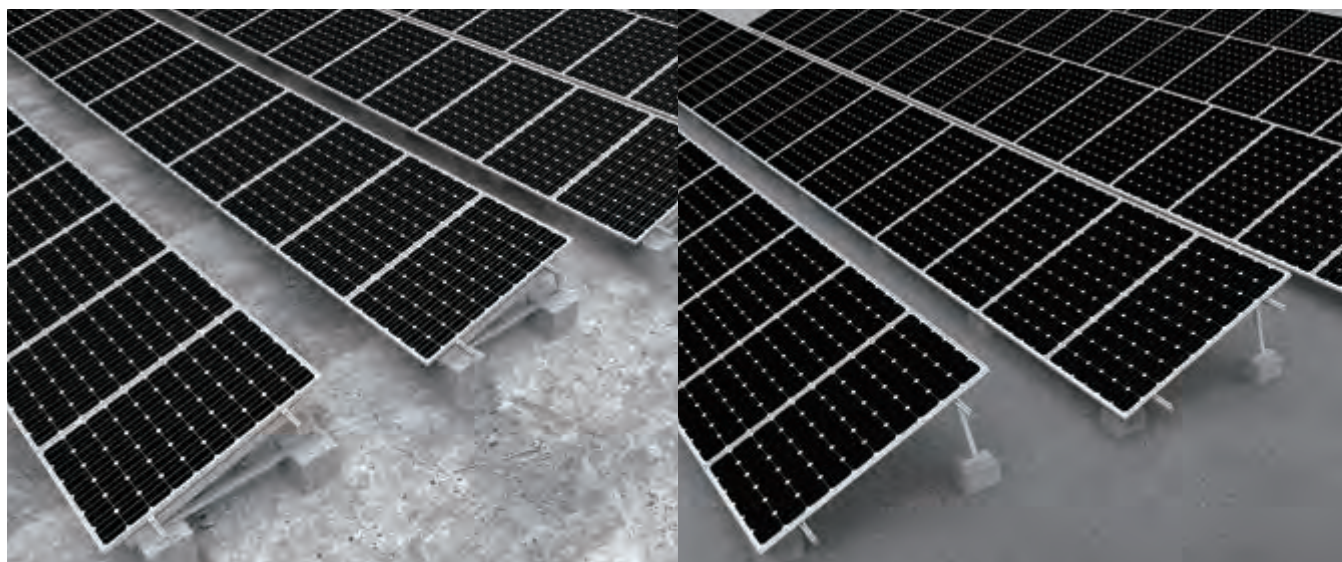


Product Advantages

- Folding
- Easy installation
- Light weight
- Cost-effective

Features

- Application: Commercial & Residential
- Max Wind Load: 60m/s
- PV Module: Framed or Unframed
- Module Orientation: Portrait
- Fixed Tilt Angle: 15°, 20°, 30°
- Material: Anodized Aluminium 6005-T5



A1V & A2V Aluminum Ground Mount



Advantages

- Easy installation
- Safety and reliability
- Cost saving
- Artistic style
- High class anodized

Technical Datas

- Installation site: Open field ground mount
- Foundation: Ground screw & Concrete
- Mount tilt angle: 0-45 Degree
- Wind velocity: Up to 60m/s
- Snow load: Up to 1.4KN/M²
- Main component: AL6005-T5
- Accessories: SUS 304 screw
- Duration: More than 30 years



Main Components:

1V-Rack



2V-Rack



Rail 19



Rail splice



Rail fastening block



End-clamp



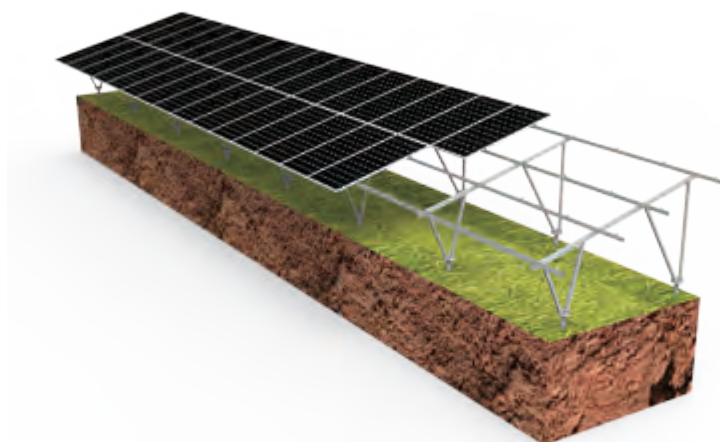
Mid-clamp



Rail cap



U2V Steel Ground Mount

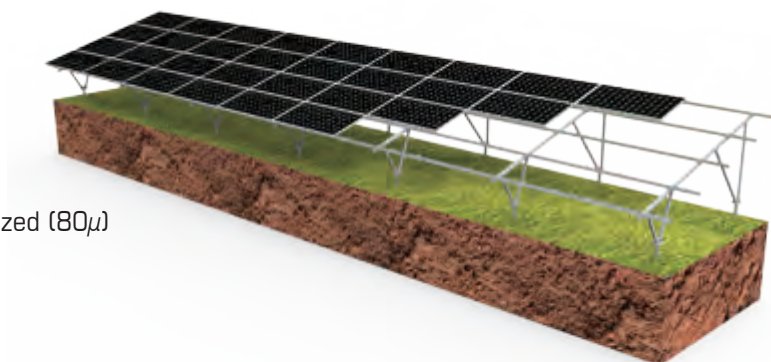


Advantages

- Easy installation
- Safety and reliability
- Cost saving
- Anti-corrosion and anti-rust

Technical Datas

- Installation site: Open field ground mount
- Foundation: Ground screw & Concrete
- Mount tilt angle: 0-45 Degree
- Wind velocity: Up to 60m/s
- Snow load: Up to 1.4KN/M²
- Protection: Q235B & Q345 Hot dip galvanized (80μ)
- Accessories: Stainless steel fastening
- Duration: More than 30 years



Main Components:

2V Rack	Galvanizing Rail	Rail splice	Rail fastening block
Mid-clamp	End-clamp	Ground screw	Rail cap

TW Aluminum Ground Mount

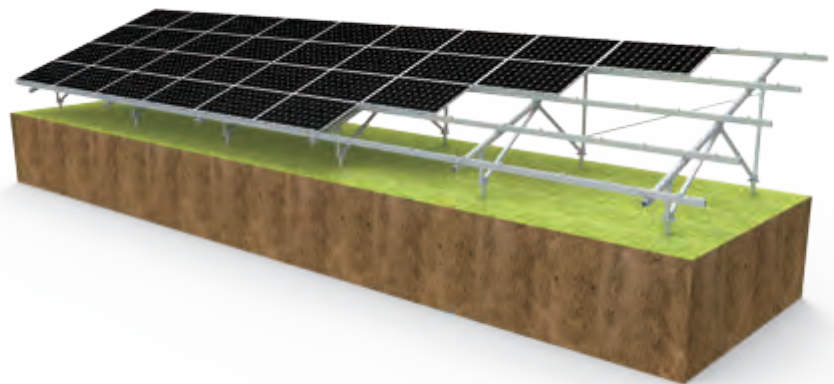


Advantages

- Easy installation
- Safety and reliability
- Cost saving
- Anti-corrosion and anti-rust

Technical Datas

- Installation site: Open field ground mount
- Foundation: Ground screw & Concrete
- Mount tilt angle: 5-35 Degree
- Wind velocity: Up to 60m/s
- Snow load: Up to 1.4KN/M²
- Main components: AL6005-T5
- Accessories: Stainless steel fastening
- Duration: More than 30 years



Main Components:

IV Rack



2V Rack



Aluminium Rail



Rail splice kit



Rail fastening block



Mid-clamp



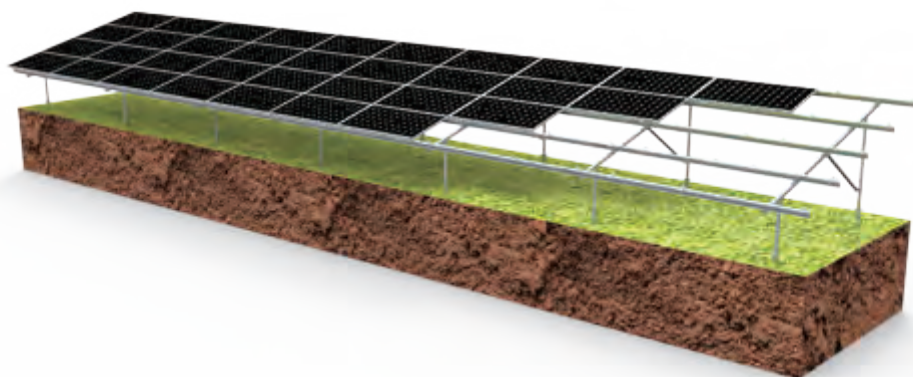
End-clamp



Ground screw



Pipe Ground Mount

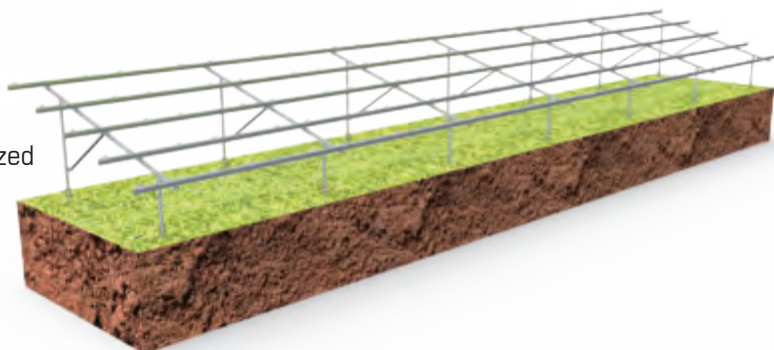


Advantages

- Easy installation
- Safety and reliability
- Cost saving
- Anti-corrosion and anti-rust

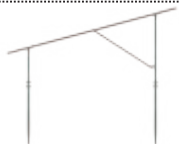
Technical Datas

- Installation site: Open field ground mount
- Foundation: Ground screw & Concrete
- Mount tilt angle: 5-30 Degree
- Wind velocity: Up to 60m/s
- Snow load: Up to 1.4KN/M²
- Protection: Q345 & Q235B Hot dip galvanized
- Accessories: Stainless steel fastening
- Duration: More than 30 years



Main Components:

IV Rack



CK Brace



Galvanizing Rail



Rail splice kit



Pipe Block



Mid-clamp



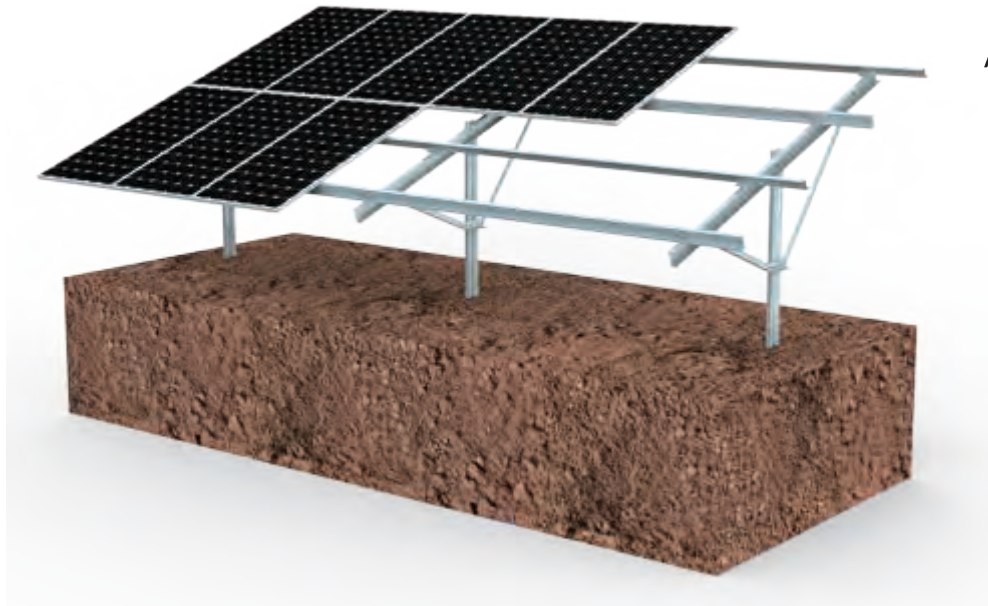
End-clamp



Ground screw



Σ Single Pipe Ground Mount



Advantages

- Easy installation
- Safety and reliability
- Cost saving
- Anti-corrosion and anti-rust

Technical Datas

- Installation site: Open field ground mount
- Foundation: Ground screw & Concrete
- Mount tilt angle: 5-30 Degree
- Wind velocity: Up to 60m/s
- Snow load: Up to 1.4KN/M²
- Protection: Q345 & Q235B Hot dip galvanized
- Accessories: Stainless steel fastening
- Duration: More than 30 years



Main Components:

Rack	Rail	Rail splice	Rail fastening block
Support Bracing	Mid-clamp	End-clamp	Rail cap

Adjustable Steel Ground Mount

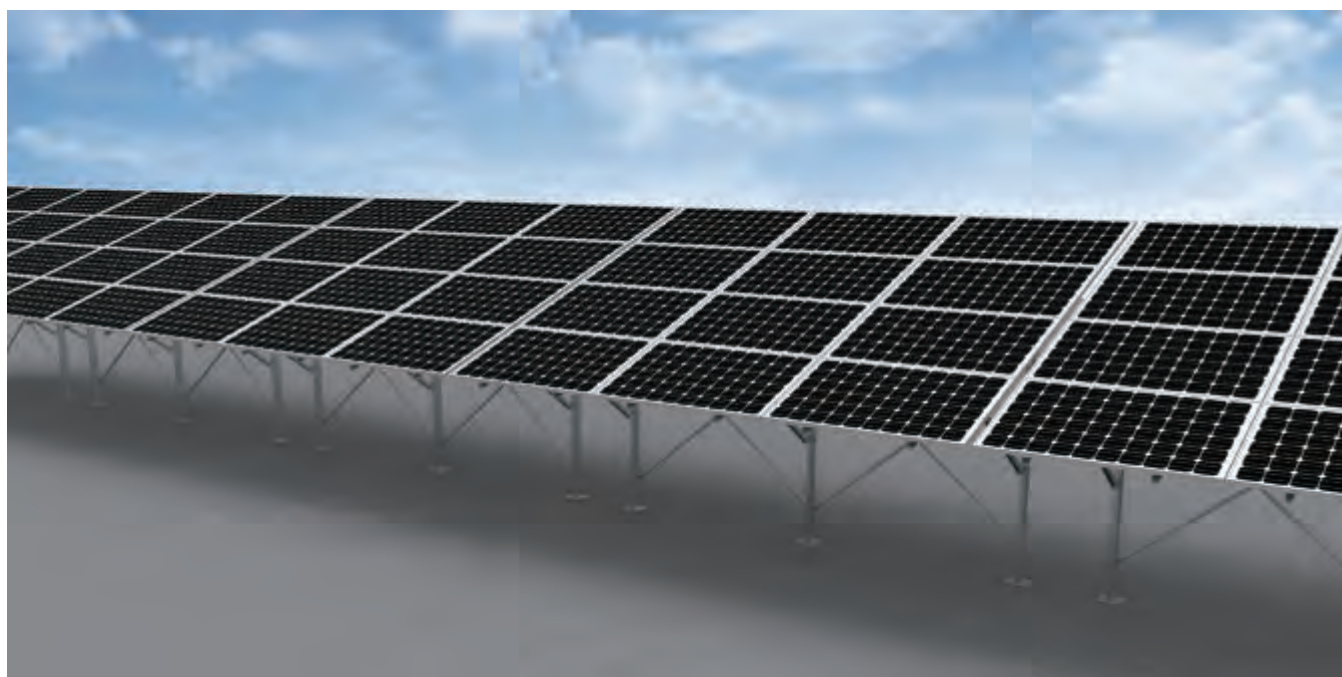
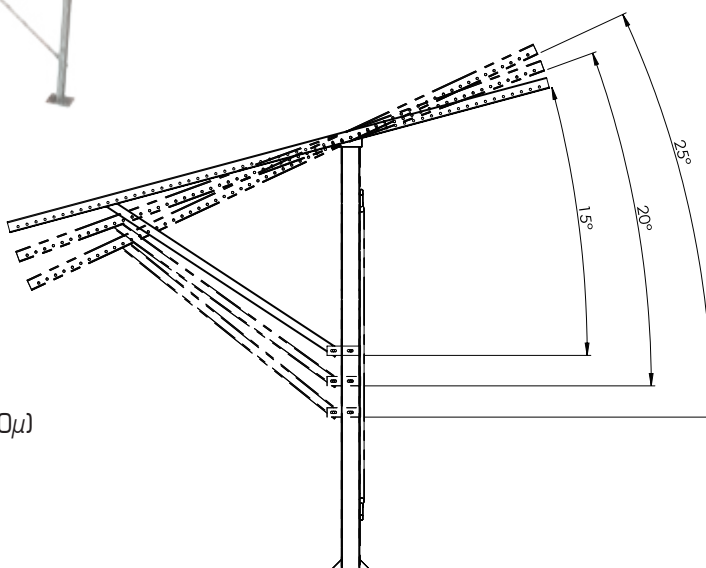


Advantages

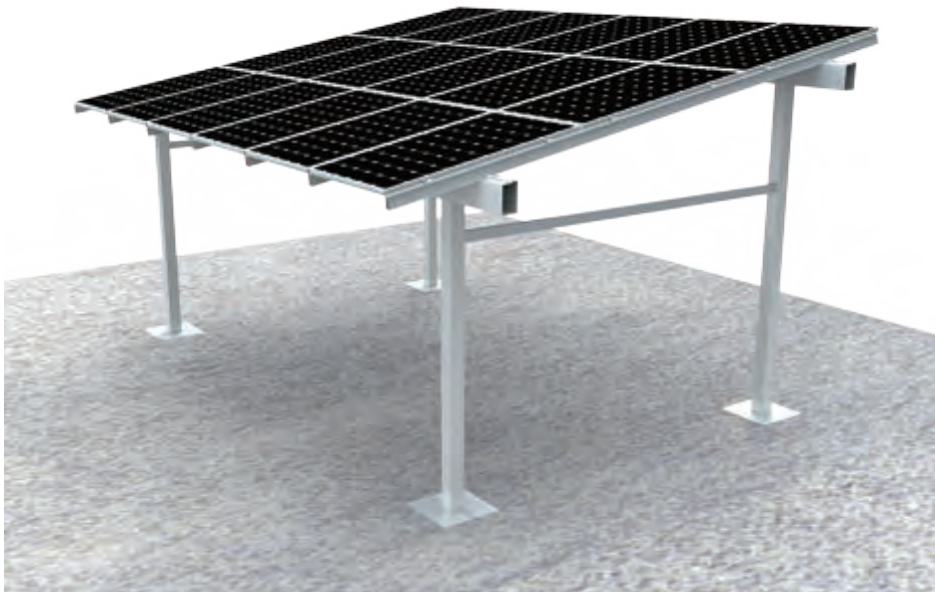
- Adjustable
- Easy installation
- Anti-corrosion
- Cost saving & anti-rust

Technical Datas

- Installation site: Open field ground mount
- Foundation: Ground screw & Concrete
- Mount tilt angle: 5-30 Degree
- Wind velocity: Up to 60m/s
- Snow load: Up to 1.4KN/M²
- Protection: Q345 & Q235B Hot dip galvanized (80μ)
- Accessories: Stainless steel fastening
- Duration: More than 30 years



Alu Carport



Advantages

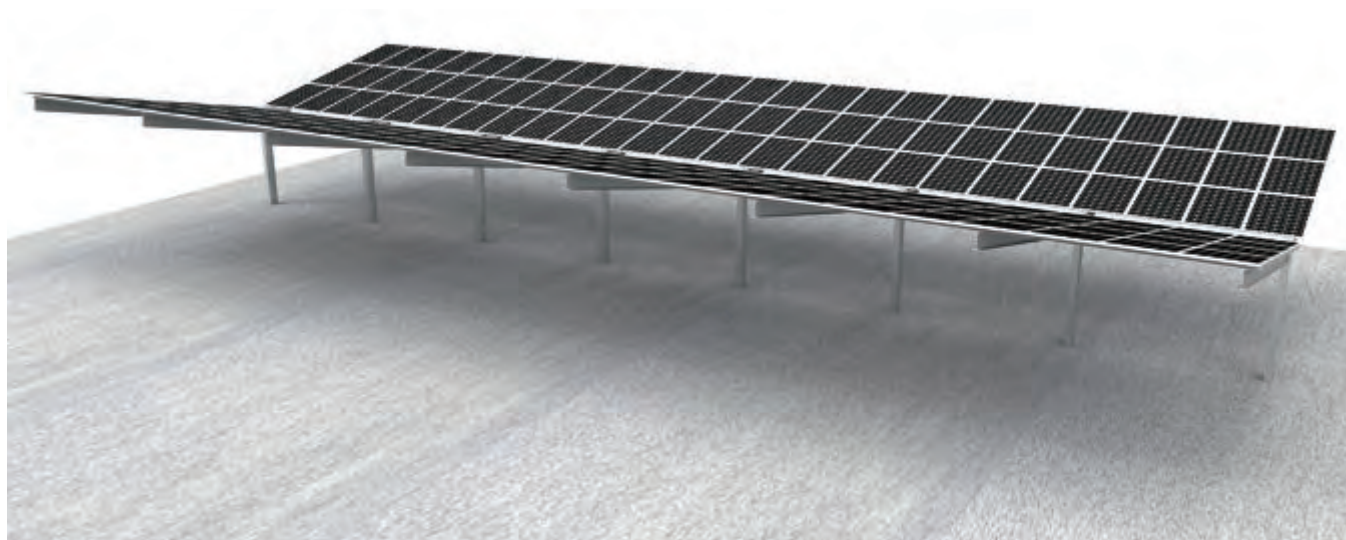
- Adjustable
- Easy installation
- Anti-corrosion
- Cost saving & anti-rust

Technical Datas

- Installation site: Open field or Home car parking
- Foundation: Concrete
- Wind velocity: Up to 60m/s
- Snow load: Up to 1.4KN/M²
- Main components: AL6005-T5
- Accessories: Stainless steel fastening
- Duration: More than 30 years

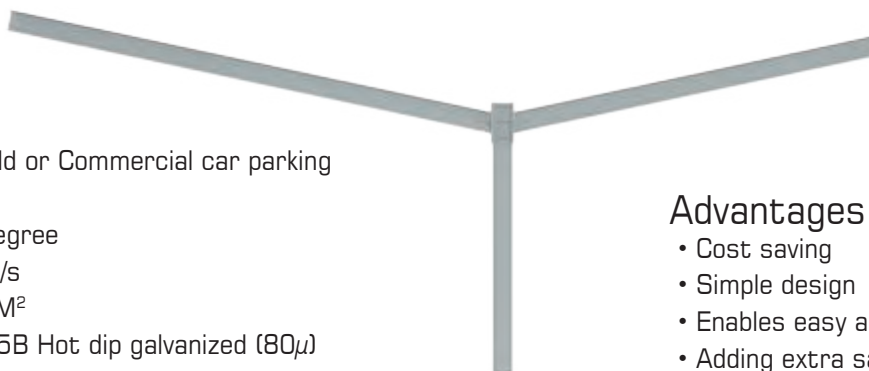


Steel Y Carport



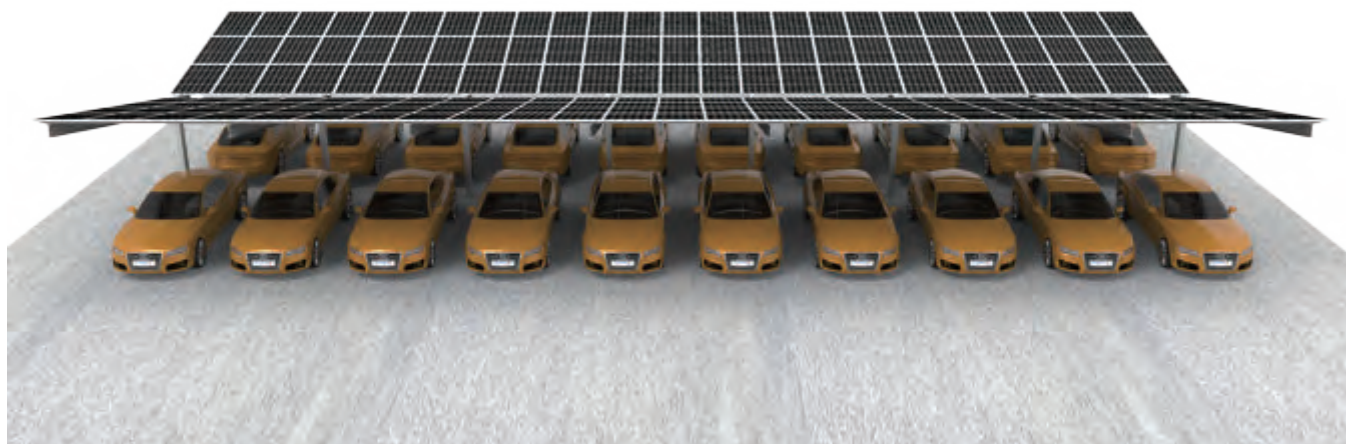
Technical Datas

- Installation site: Open field or Commercial car parking
- Foundation: Concrete
- Mount tilt angle: 5-30 Degree
- Wind velocity: Up to 60m/s
- Snow load: Up to 1.4KN/M²
- Protection: Q345 & Q235B Hot dip galvanized (80μ)
- Accessories: Stainless steel fastening
- Duration: More than 30 years

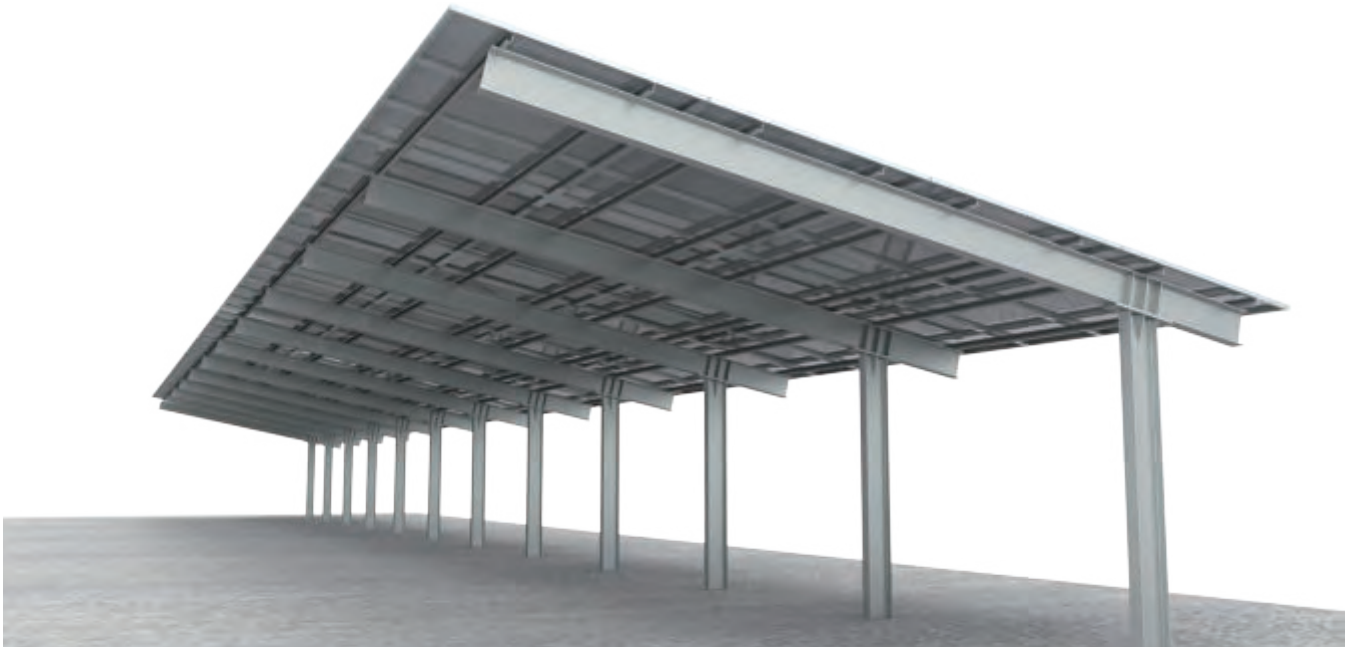


Advantages

- Cost saving
- Simple design
- Enables easy access
- Adding extra safety



Steel T Carport

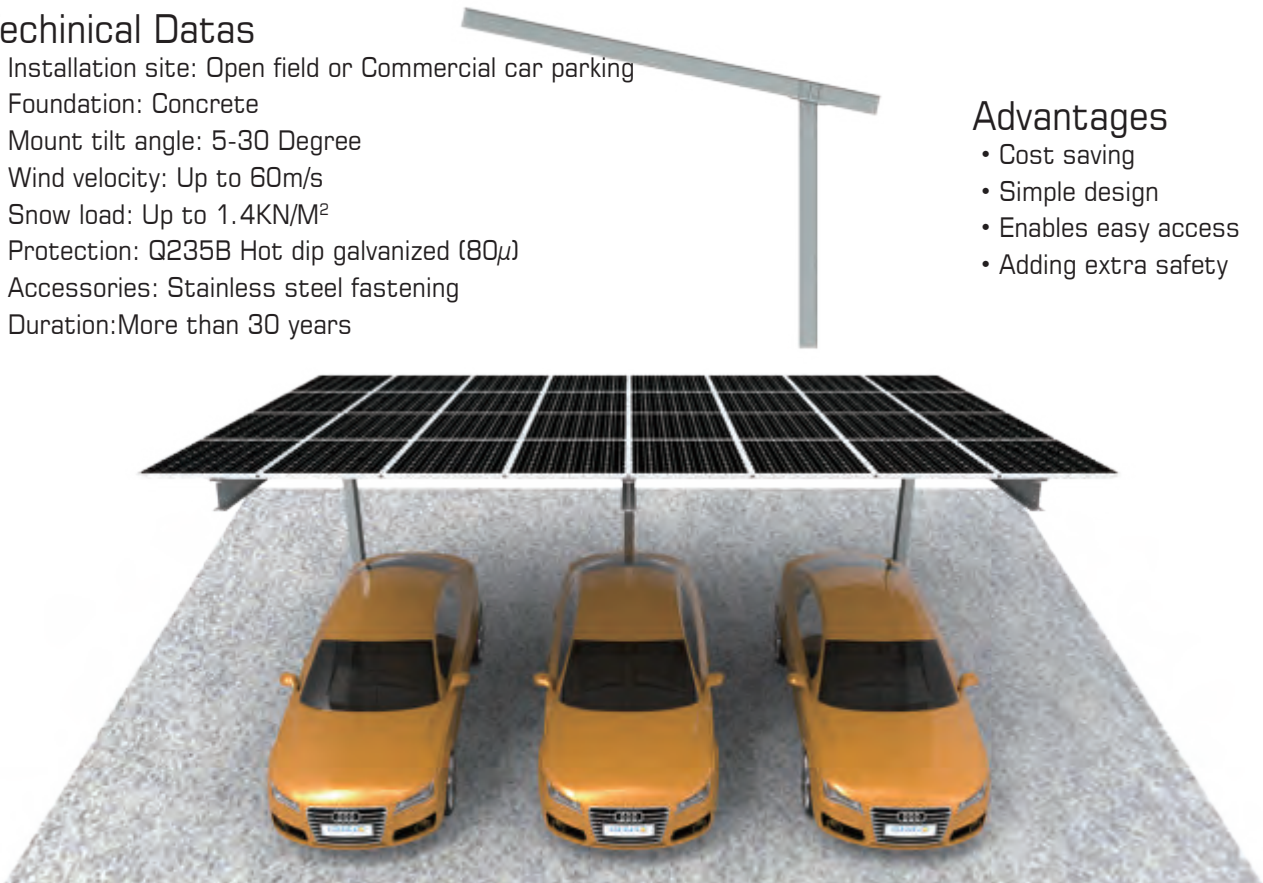


Technical Datas

- Installation site: Open field or Commercial car parking
- Foundation: Concrete
- Mount tilt angle: 5-30 Degree
- Wind velocity: Up to 60m/s
- Snow load: Up to 1.4KN/M²
- Protection: Q235B Hot dip galvanized (80μ)
- Accessories: Stainless steel fastening
- Duration: More than 30 years

Advantages

- Cost saving
- Simple design
- Enables easy access
- Adding extra safety



GROUND SCREW & ANCHOR

Ground screw type I with flange I

·Material steel Q235B

·High class hot galvanized 80μ

Item No.	Diameter (mm)	Length(mm)	Thickness(mm)
CK-GS-F1-1200-3.0T	76	1200	3.0
CK-GS-F1-1600-3.0T	76	1600	3.0
CK-GS-F1-2000-3.0T	76	2000	3.0
CK-GS-F1-2500-3.0T	76	2500	3.0
CK-GS-F1-1200-3.5T	76	1200	3.5
CK-GS-F1-1600-3.5T	76	1600	3.5
CK-GS-F1-2000-3.5T	76	2000	3.5
CK-GS-F1-2500-3.5T	76	2500	3.5

Ground screw type I with flange II

·Material steel Q235B

·High class hot galvanized 80 μ

Item No.	Diameter (mm)	Length(mm)	Thickness(mm)
CK-GS-F2-1200-3.0T	76	1200	3.0
CK-GS-F2-1600-3.0T	76	1600	3.0
CK-GS-F2-2000-3.0T	76	2000	3.0
CK-GS-F2-2500-3.0T	76	2500	3.0
CK-GS-F2-1200-3.5T	76	1200	3.5
CK-GS-F2-1600-3.5T	76	1600	3.5
CK-GS-F2-2000-3.5T	76	2000	3.5
CK-GS-F2-2500-3.5T	76	2500	3.5

Ground screw type II with flange I

·Material steel Q235B

·High class hot galvanized 80 μ

Item No.	Diameter(mm)	Length(mm)	Thickness(mm)
CK-GSY-76F1-24-1200-3.0T	76	1200	3.0
CK-GSY-76F1-24-1600-3.0T	76	1600	3.0
CK-GSY-76F1-24-2000-3.0T	76	2000	3.0
CK-GSY-76F1-24-2500-3.0T	76	2500	3.0
CK-GSY-76F1-24-1200-3.5T	76	1200	3.5
CK-GSY-76F1-24-1600-3.5T	76	1600	3.5
CK-GSY-76F1-24-2000-3.5T	76	2000	3.5
CK-GSY-76F1-24-2500-3.5T	76	2500	3.5

Ground screw type II with flange II

·Material steel Q235B

·High class hot galvanized 80 μ

Item No.	Diameter(mm)	Length(mm)	Thickness(mm)
CK-GSY-76F2-24-1200-3.0T	76	1200	3.0
CK-GSY-76F2-24-1600-3.0T	76	1600	3.0
CK-GSY-76F2-24-2000-3.0T	76	2000	3.0
CK-GSY-76F2-24-2500-3.0T	76	2500	3.0
CK-GSY-76F2-24-1200-3.5T	76	1200	3.5
CK-GSY-76F2-24-1600-3.5T	76	1600	3.5
CK-GSY-76F2-24-2000-3.5T	76	2000	3.5
CK-GSY-76F2-24-2500-3.5T	76	2500	3.5



Adjustable ground screw type I without flange

- Material steel Q235B
- High class hot galvanized 80μ

Item No.	Diameter(mm)	Length(mm)	Thickness(mm)
CK-GST-76N-1200-3.0T	76	1200	3.0
CK-GST-76N-1600-3.0T	76	1600	3.0
CK-GST-76N-2000-3.0T	76	2000	3.0
CK-GST-76N-2500-3.0T	76	2500	3.0
CK-GST-76N-1200-3.5T	76	1200	3.5
CK-GST-76N-1600-3.5T	76	1600	3.5
CK-GST-76N-2000-3.5T	76	2000	3.5
CK-GST-76N-2500-3.5T	76	2500	3.5



Adjustable ground screw type II without flange

- Material steel Q235B
- High class hot galvanized 80 μ

Item No.	Diameter(mm)	Length(mm)	Thickness(mm)
CK-GSYT-76N-1200-3.0T	76	1200	3.0
CK-GSYT-76N-1600-3.0T	76	1600	3.0
CK-GSYT-76N-2000-3.0T	76	2000	3.0
CK-GSYT-76N-2500-3.0T	76	2500	3.0
CK-GSYT-76N-1200-3.5T	76	1200	3.5
CK-GSYT-76N-1600-3.5T	76	1600	3.5
CK-GSYT-76N-2000-3.5T	76	2000	3.5
CK-GSYT-76N-2500-3.5T	76	2500	3.5



Adjustable ground screw flange I

- Material steel Q235B
- High class hot galvanized 80 μ

Item No.	Diameter(mm)	Length(mm)	Thickness(mm)
CK-AFP-76F1-500-3.0T	200	500	3.0
CK-AFP-76F1-800-3.5T	200	800	3.5



Adjustable ground screw flange II

- Material steel Q235B
- High class hot galvanized 80 μ

Item No.	Diameter(mm)	Length(mm)	Thickness(mm)
CK-AFP-76F2-500-3.0T	200	500	3.0
CK-AFP-76F2-800-3.5T	200	800	3.5



Anchor foundation

- Material steel Q235B
- High class hot galvanized 80 μ




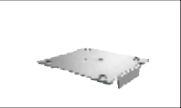
















Item No.	Description
CK-NK-03Anchor foundation with	3 pipes
CK-NK-06Anchor foundation with	9 pipes
CK-NK-12Anchor foundation with	12 pipes

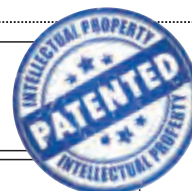


Earthing Accessory

This product is designed to bond solar PV modules to mounting structures and create an electrical path to ground.

Earthing Clip

		CK-GTC-R3A CHIKO Grounding Clip (Open 8.5mm)
		CK-GTC-R3B CHIKO Grounding Clip (Closed 8.5mm)
		CK-GTC-R3C CHIKO Grounding Clip (Open 12mm)
		CK-GTC-R3D CHIKO Grounding Clip (Circle closed 8.5mm)
		CK-GTC-R3E CHIKO Grounding Clip for Adjustable Mid Clamp (Open 8.5mm)
		CK-GTC-R3F CHIKO Grounding Clip Closed 8.5mm for Ground Mount Mid Clamps
		CK-GTC-R1 CHIKO Bonding Jumper
		CK-GTC-R1B CHIKO Bonding Jumper in Rail Splice Kit
		CK-GTC-R2 CHIKO Grounding Lug
		CK-FSC-ECP01-205 CHIKO Bonding Jumper between Panels



Cable Fixed Accessory

Cable clip



CK-FSC-CP1 Solar cable clips 2.5 Hold one or two 2.5mm² solar cable
 CK-FSC-CP2 Solar cable clips 4.0 Hold one or two 4.0mm² solar cable
 CK-FSC-CP3 Solar cable clips 6.0 Hold one or two 6.0mm² solar cable

- Package 8000 PCS/CTN
- Suit all solar modules
- Made from stainless steel SUS304
- Fast and cost-effective installation



Stainless steel cable tie

- Various length available
- Stainless Steel SUS304
- Unique buckle locking mechanism
- Fast & easy installation

Material in high quality SUS304			
Item	Width (mm)	Length (mm)	Package (pcs/pkg)
CK-FSC-TA-150	4.6	150	100
CK-FSC-TA-200	4.6	200	100
CK-FSC-TA-250	4.6	250	100
CK-FSC-TA-300	4.6	300	100
CK-FSC-TA-350	4.6	350	100

- Package 5000 PCS/CTN



PV Connector

CK-0807-A/B CK-0807-3A/3B CK-0808-A/B CK-0808-3A/3B
PV Junction Box adopts crowned spring and has automatic locking mechanism on plugs to ensure solid connection between contact and connector. Connector plug (negative) is equipped with buttons that are symmetric at the bottom to ensure the convenience of removal. Such removal does not need any extra instruments, therefore, can make sure that the plug is intact. This advanced product, with easy usage, is more convenient to use than similar products. In addition, the product also confirms to DIN V VDE V 0126-3.



PV CONNECTOR



CK-0807-A/B-02
MC4 Single Connector
500 SETS/PKG



CK-0807-2A/2B-02
MC4 2-Branch Connector
100 SETS/PKG

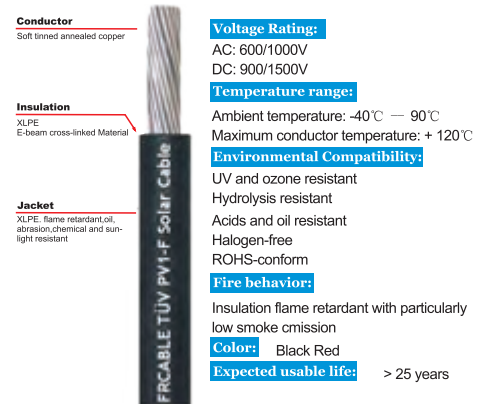


CK-0807-3A/3B-02
MC4 3-Branch Connector
100 SETS/PKG

PV Cable

CHIKO Photovoltaic Cable

- Conductor : Tinned annealed copper
- Insulation : 120°CXLPE, black
- Jacket : 120°CXLPE, black
- voltage 600/1000V temperature 120°C
- Specifically designed for connecting photovoltaic system components inside and outside of building and equipment with high mechanical requirements and extreme weather conditions . For permanent installations.
- Cable made of electron-beam cross-linked insulation and coating; high resistance against heat, cold, oil, abrasion, ozone, UV and weather; with improved reaction in case of fire; low smoke, halogen free, flame free, flame retardant; flexible, easy to strip, very low space requirement, extremely mechanically robust, very long lifetime.



Construction

Type	Conductor		Insulation Standard Thickness	Insulation Standard Dia.	Jacket Standard Thickness	Outer Dia.	Conductor resistance (20°C)	Max. Current Carrying Capacity
	Construction	Conductor Dia.						
mm ²	N/mm	(about)mm	mm	mm	mm	mm	Ω / KM	Apm
1.5	30/0.25 ± 0.006	1.58	0.90	3.38 ± 0.1	1.10	5.5 ± 0.2	13.7	30
2.5	50/0.25 ± 0.006	2.04	0.85	3.74 ± 0.1	0.90	5.5 ± 0.2	8.21	41
4.0	56/0.30 ± 0.006	2.59	0.85	4.29 ± 0.1	0.90	6.10 ± 0.2	5.09	55
6.0	84/0.30 ± 0.006	3.17	0.85	4.87 ± 0.1	1.05	7.0 ± 0.2	3.39	70

Electrical Properties

Item	Units	Specification
Conductor resistance (20°C)	Ω / km	—
Insulation resistance (90°C)	Ω / cm	≤ 10 ¹¹
Withstand voltage	V / 5min	AC6500
Lifetime	Year	≤ 25 years
Min. Bending Radius		5D



CHIKO Photovoltaic Cable

Item	Description	Package (Meter/Roll)
CK-0809-1.5	Solar cable 1.5mm ²	250
CK-0809-2.5	Solar cable 2.5mm ²	250
CK-0809-4.0	Solar cable 4.0mm ²	100
CK-0809-6.0	Solar cable 6.0mm ²	200
CK-0809-10.0	Solar cable 10.0mm ²	100



PROJECTS REFERENCE



WORLDLEADING

M A N U F A C T U R E



Shanghai CHIKO Solar Technology Co., Ltd.

Add: No.680 Xingwen Road, Jiading District Shanghai 201815 China

Tel: +86-21-59972267 / 59973712 / 59973713

Fax: +86-21-59972938

Email: sales@chikolar.com

www.chikolar.com